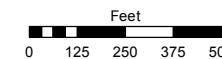
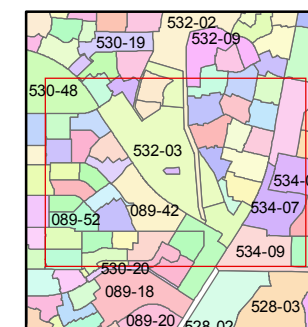
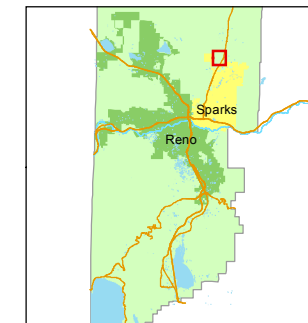


STATE OF NEVADA
WASHOE COUNTY
ASSESSOR'S OFFICE
Michael E. Clark, Assessor

1001 East Ninth Street
Building D
Reno, Nevada 89512
(775) 328-2231



1 inch = 500 feet



created by: KSB 1/28/2010

last updated: JMO 11/15/16

area previously shown on map(s)

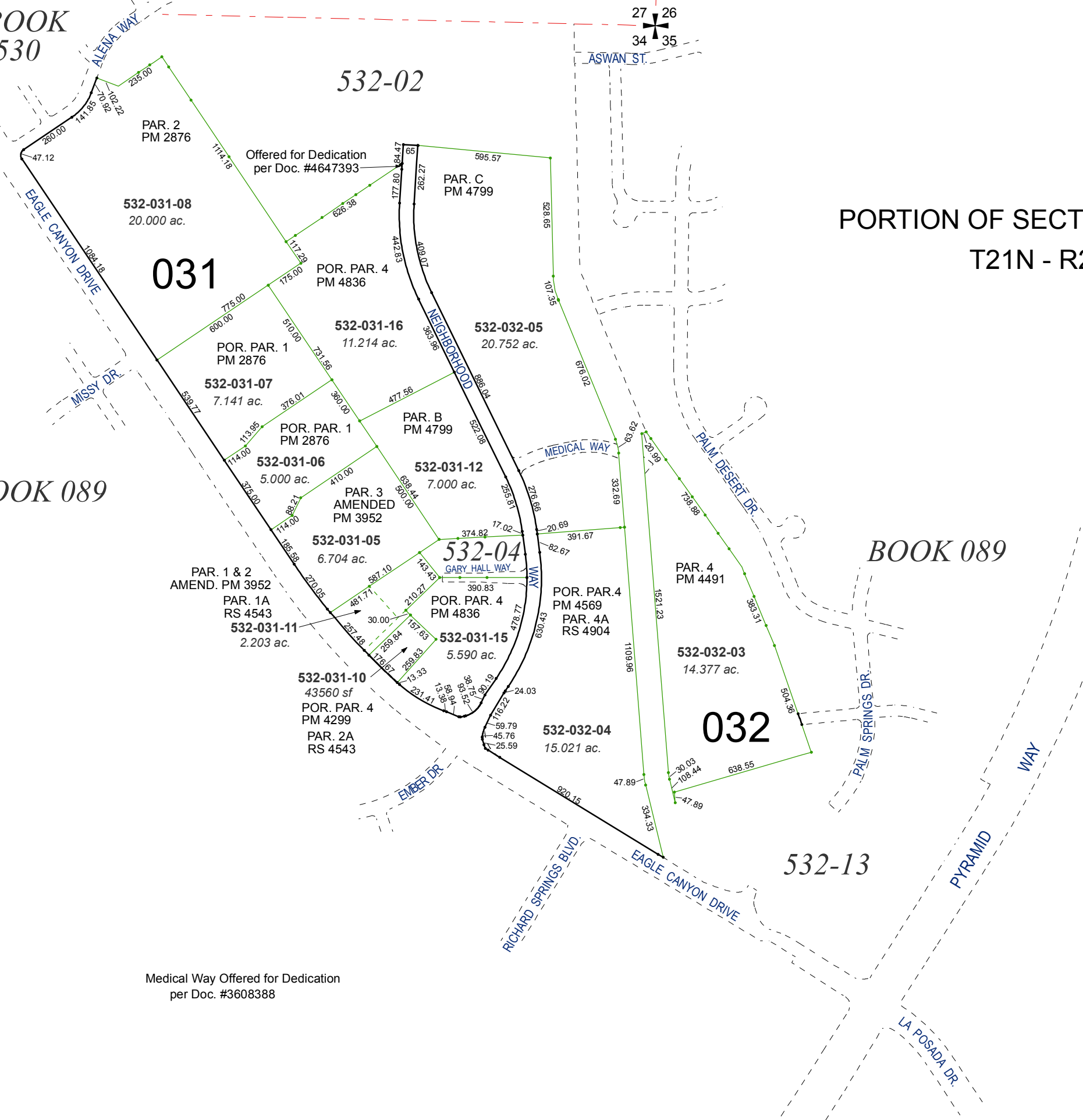
089-15, 089-46, 530-28

NOTE: This map was prepared for the use of the Washoe County Assessor for assessment and illustrative purposes only. It does not represent a survey of the premises. No liability is assumed as to the sufficiency or accuracy of the data delineated hereon.

BOOK
530

BOOK 089

PORTION OF SECTIONS 34 & 35
T21N - R20E



27
34
26
35

Medical Way Offered for Dedication
per Doc. #3608388