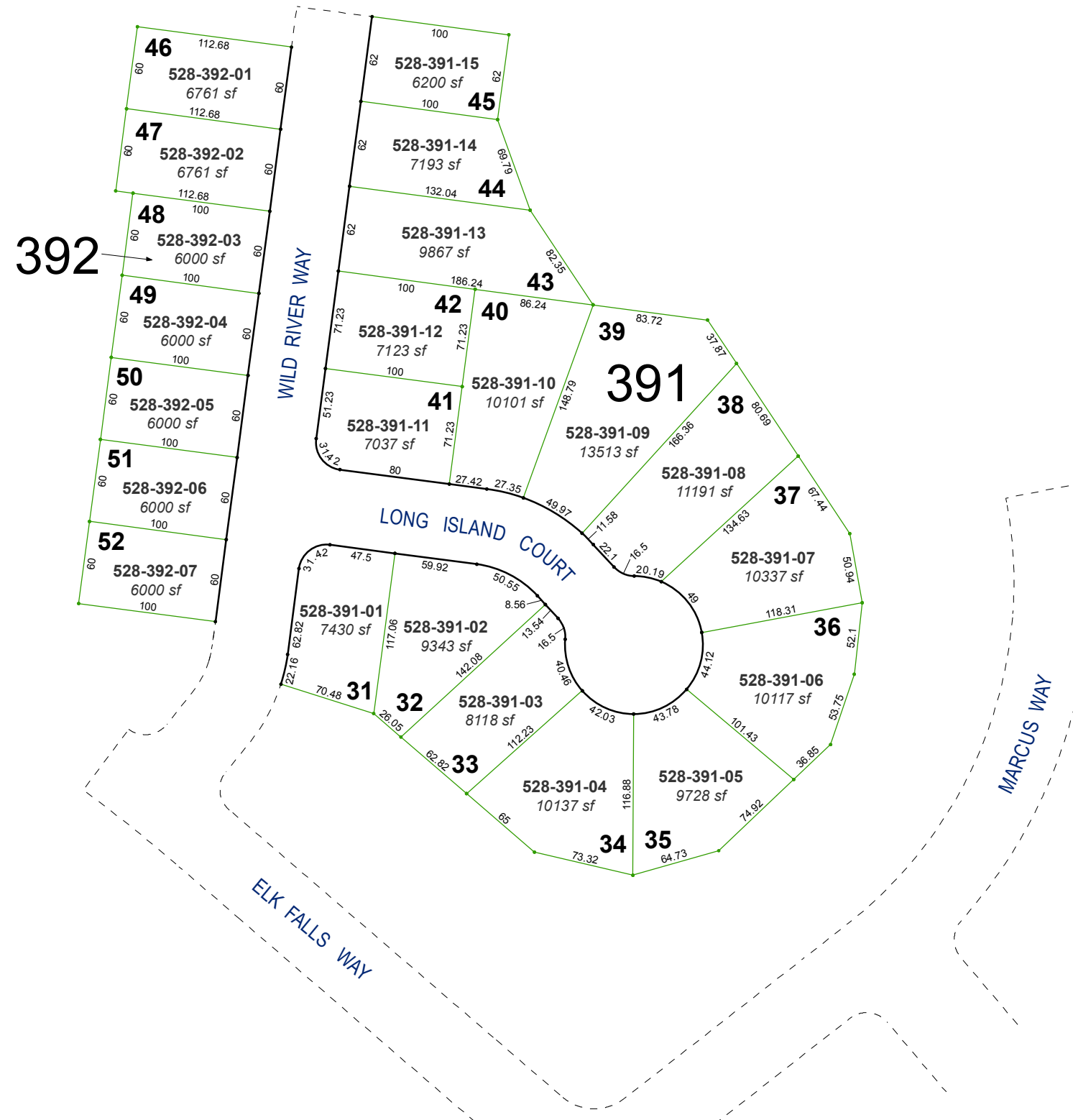


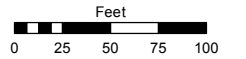
**(#5164)**  
**PIONEER MEADOWS VILLAGE 6**  
**PHASE 1B**  
 A PLANNED COMMUNITY  
 PORTION OF THE NORTH ½ SECTION 11  
 T20N - R20E



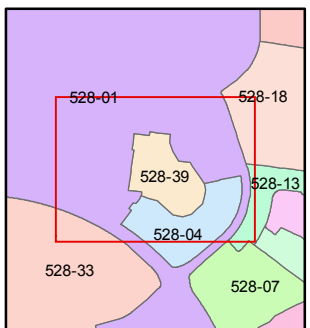
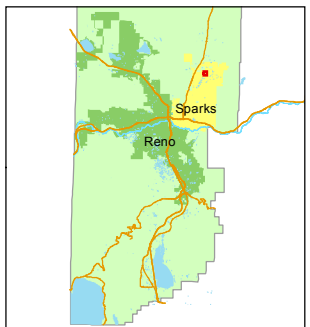
Assessor's Map Number  
**528-39**

STATE OF NEVADA  
**WASHOE COUNTY**  
**ASSESSOR'S OFFICE**  
 Michael E. Clark, Assessor

1001 East Ninth Street  
 Building D  
 Reno, Nevada 89512  
 (775) 328-2231



1 inch = 100 feet



created by: EMG 6/9/2016

last updated: \_\_\_\_\_

area previously shown on map(s)

528-01

NOTE: This map was prepared for the use of the Washoe County Assessor for assessment and illustrative purposes only. It does not represent a survey of the premises. No liability is assumed as to the sufficiency or accuracy of the data delineated hereon.