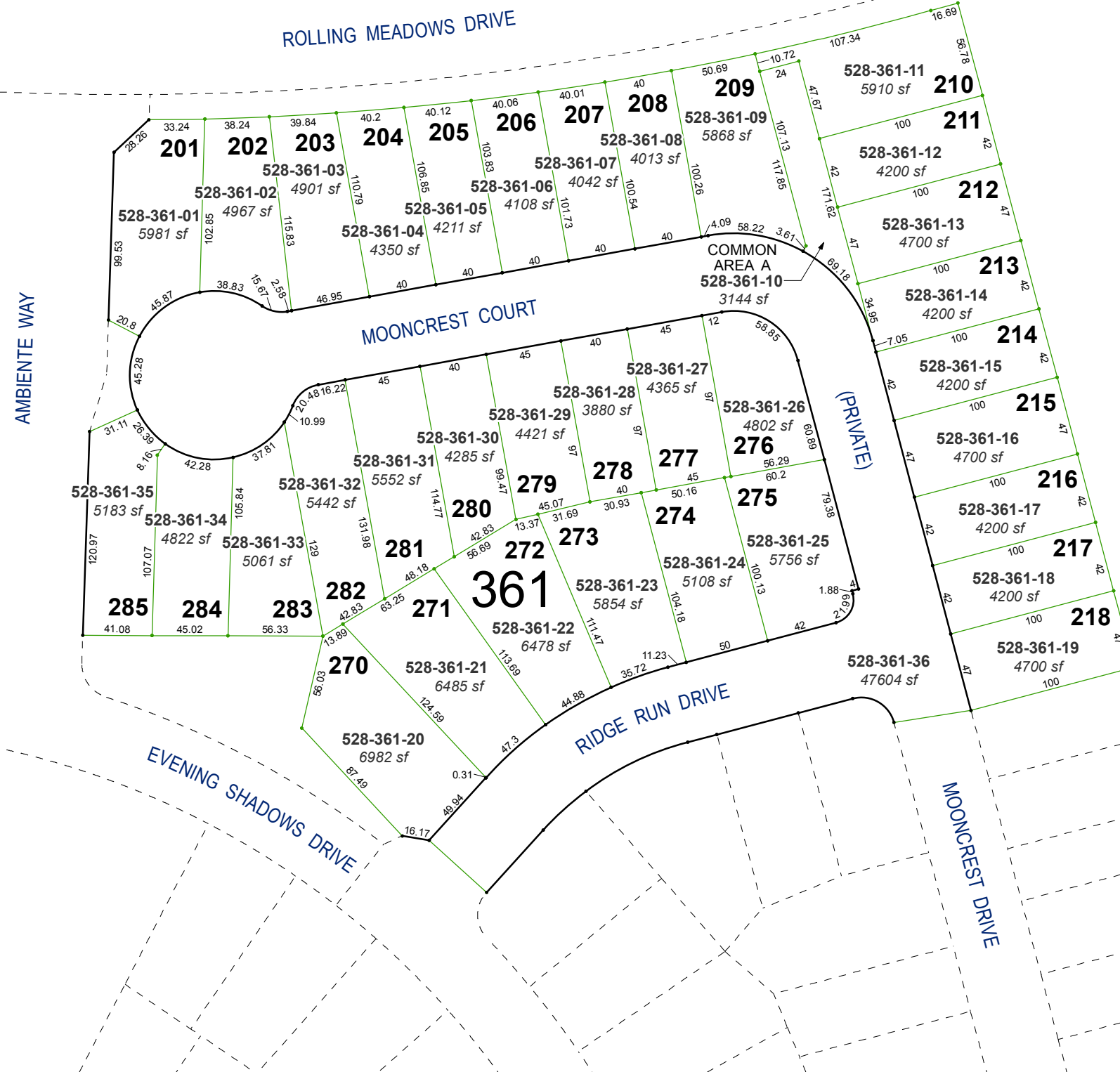


(#5118) PIONEER MEADOWS VILLAGE 7B&C PHASE 2&3

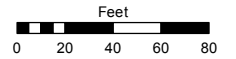
PORTION OF SOUTH ½ SECTION 11
T20N - R20E



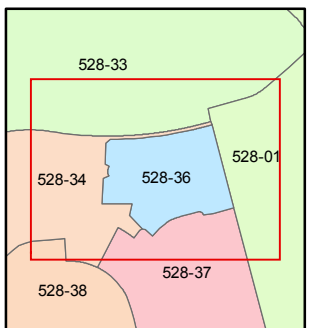
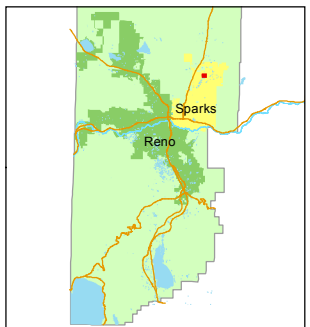
Assessor's Map Number
528-36

STATE OF NEVADA
WASHOE COUNTY
ASSESSOR'S OFFICE
Michael E. Clark, Assessor

1001 East Ninth Street
Building D
Reno, Nevada 89512
(775) 328-2231



1 inch = 80 feet



created by: EMG 5/13/2015

last updated: _____

area previously shown on map(s)

528-33

NOTE: This map was prepared for the use of the Washoe County Assessor for assessment and illustrative purposes only. It does not represent a survey of the premises. No liability is assumed as to the sufficiency or accuracy of the data delineated hereon.