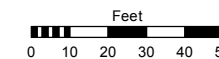
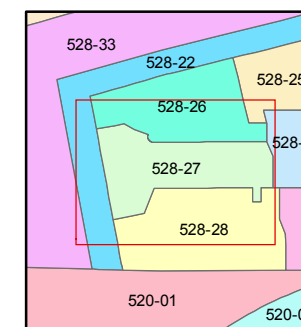
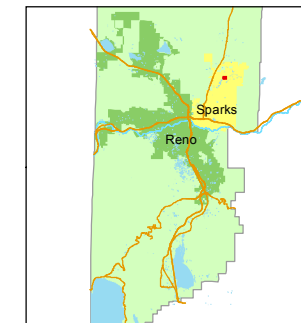


STATE OF NEVADA  
**WASHOE COUNTY**  
ASSESSOR'S OFFICE  
Michael E. Clark, Assessor

1001 East Ninth Street  
Building D  
Reno, Nevada 89512  
(775) 328-2231



1 inch = 50 feet



created by: JKF 02/28/2017

last updated: \_\_\_\_\_

area previously shown on map(s)

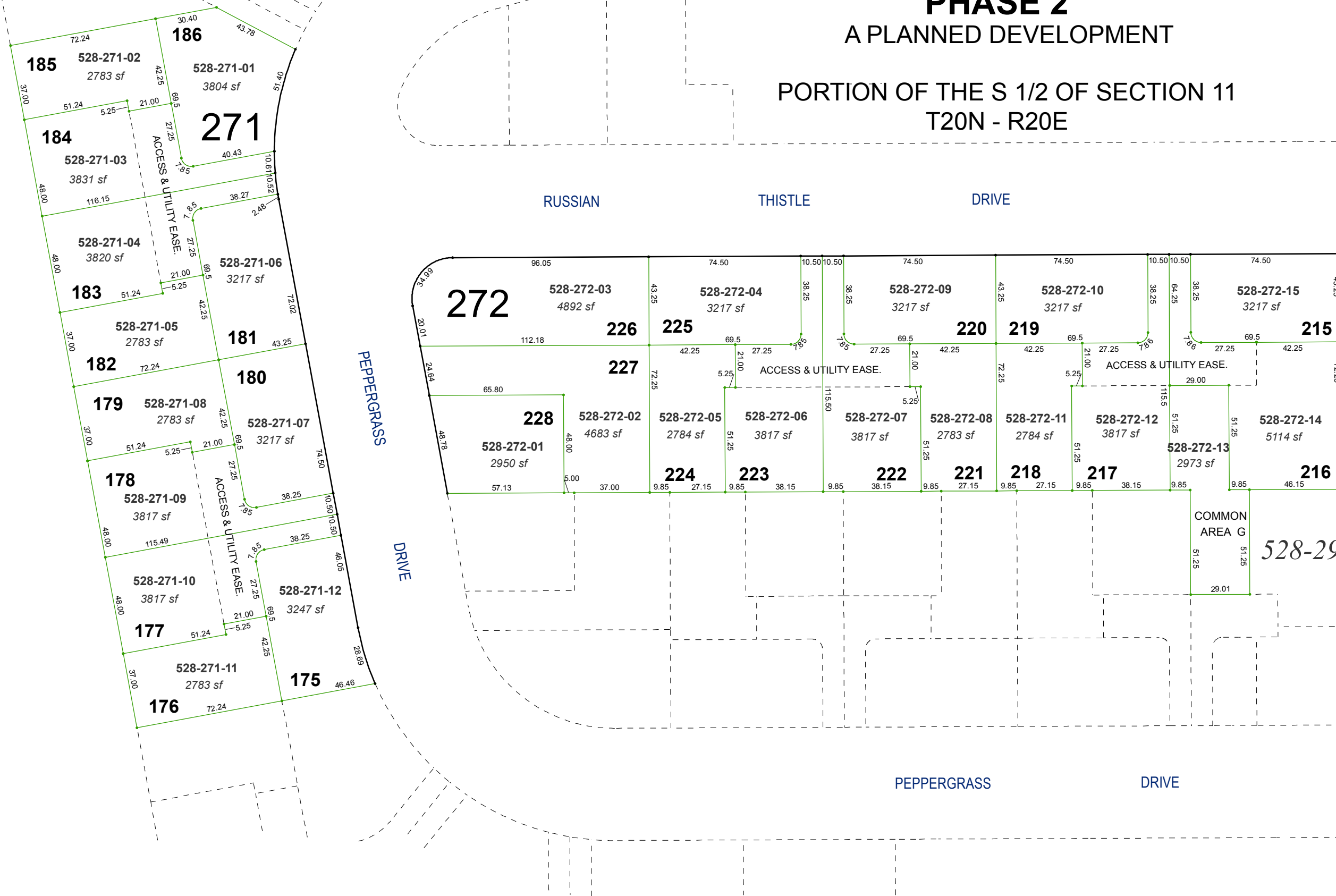
528-22

NOTE: This map was prepared for the use of the Washoe County Assessor for assessment and illustrative purposes only. It does not represent a survey of the premises. No liability is assumed as to the sufficiency or accuracy of the data delineated hereon.

# (#4699) PIONEER MEADOWS VILLAGE 9 PHASE 2

## A PLANNED DEVELOPMENT

### PORTION OF THE S 1/2 OF SECTION 11 T20N - R20E



PEPPERGRASS DRIVE

RUSSIAN THISTLE DRIVE

PEPPERGRASS DRIVE

PEPPERGRASS DRIVE

ACCESS & UTILITY EASE.

ACCESS & UTILITY EASE.

ACCESS & UTILITY EASE.

COMMON AREA G