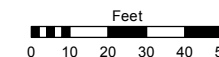
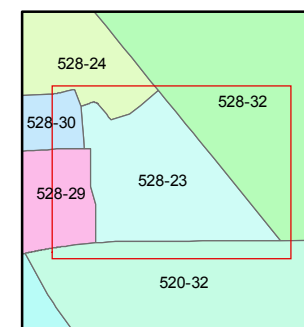
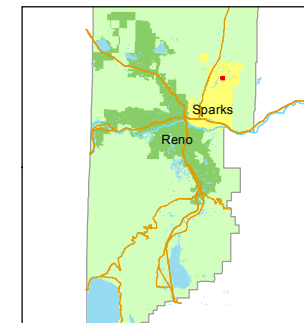


STATE OF NEVADA
WASHOE COUNTY
ASSESSOR'S OFFICE
Michael E. Clark, Assessor

1001 East Ninth Street
Building D
Reno, Nevada 89512
(775) 328-2231



1 inch = 50 feet



created by: JKF 02/23/2017

last updated: _____

area previously shown on map(s)

528-01

NOTE: This map was prepared for the use of the Washoe County Assessor for assessment and illustrative purposes only. It does not represent a survey of the premises. No liability is assumed as to the sufficiency or accuracy of the data delineated hereon.

RUSSIAN THISTLE DRIVE

PEPPERGRASS DRIVE

DRIVE

PEPPERGRASS DRIVE

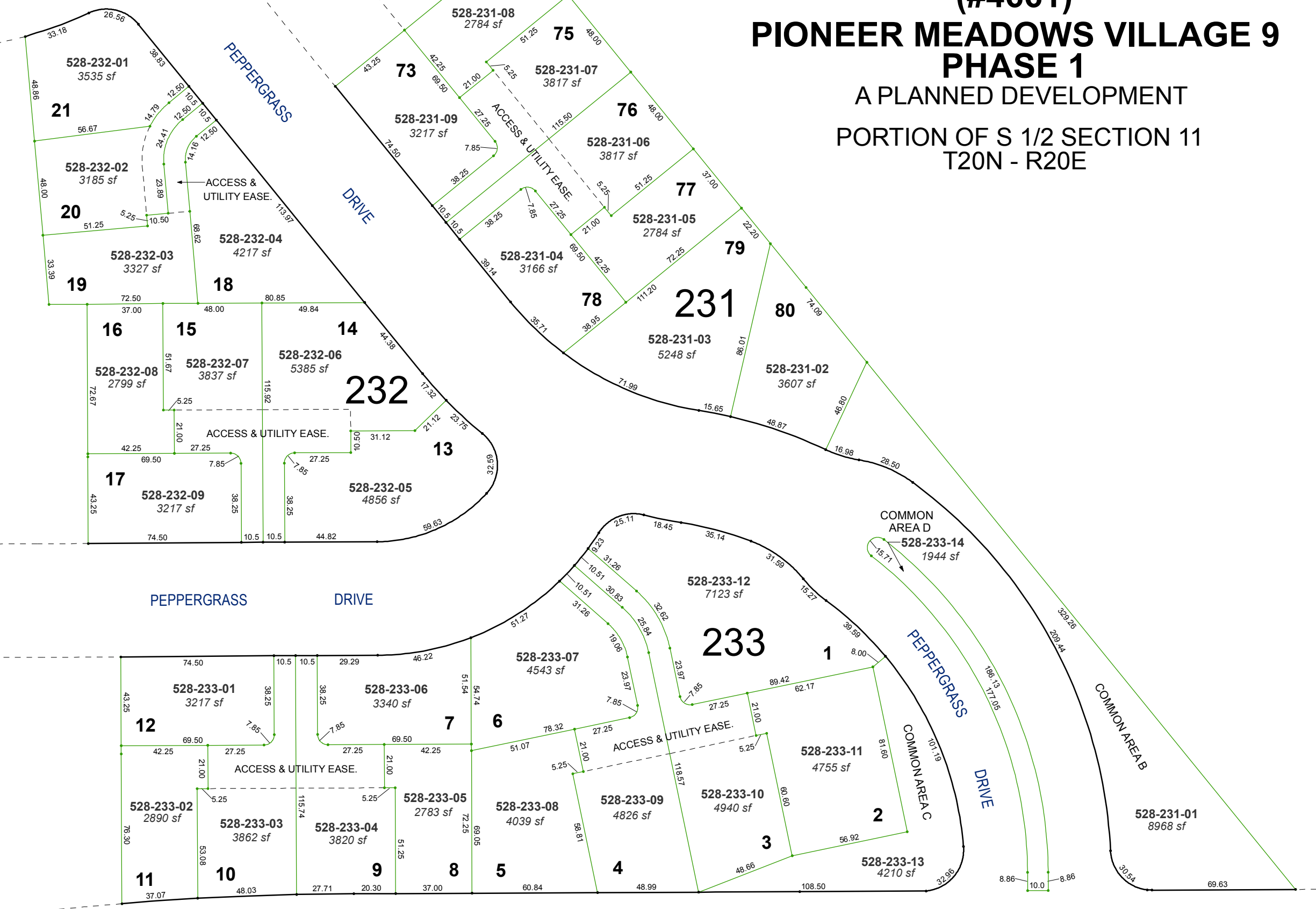
PEPPERGRASS DRIVE

DRIVE

VISTA BOULEVARD

BOULEVARD

(#4661)
PIONEER MEADOWS VILLAGE 9
PHASE 1
A PLANNED DEVELOPMENT
PORTION OF S 1/2 SECTION 11
T20N - R20E



21

20

19

16

15

232

17

13

12

11

10

9

8

7

6

5

4

3

2

7

6

5

4

3

2

1

74

75

76

77

79

80

78

231

233

COMMON AREA D

COMMON AREA C

COMMON AREA B

528-232-01
3535 sf

528-232-02
3185 sf

528-232-03
3327 sf

528-232-04
4217 sf

528-232-08
2799 sf

528-232-07
3837 sf

528-232-06
5385 sf

528-232-09
3217 sf

528-232-05
4856 sf

528-233-01
3217 sf

528-233-06
3340 sf

528-233-02
2890 sf

528-233-03
3862 sf

528-233-04
3820 sf

528-233-05
2783 sf

528-233-08
4039 sf

528-233-09
4826 sf

528-233-10
4940 sf

528-233-11
4755 sf

528-233-13
4210 sf

528-231-08
2784 sf

528-231-07
3817 sf

528-231-09
3217 sf

528-231-06
3817 sf

528-231-05
2784 sf

528-231-04
3166 sf

528-231-03
5248 sf

528-231-02
3607 sf

528-233-14
1944 sf

528-233-12
7123 sf

528-233-07
4543 sf

528-233-11
4755 sf

528-231-01
8968 sf