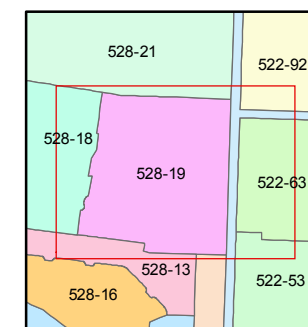
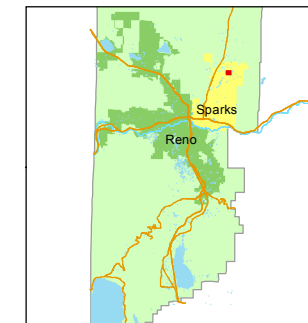


STATE OF NEVADA
WASHOE COUNTY
ASSESSOR'S OFFICE
Michael E. Clark, Assessor

1001 East Ninth Street
Building D
Reno, Nevada 89512
(775) 328-2231



1 inch = 100 feet



created by: JKF 02/22/2017

last updated: _____

area previously shown on map(s)

528-01

NOTE: This map was prepared for the use of the Washoe County Assessor for assessment and illustrative purposes only. It does not represent a survey of the premises. No liability is assumed as to the sufficiency or accuracy of the data delineated hereon.

(#4545)
PIONEER MEADOWS
VILLAGE III
UNIT 1
A PLANNED COMMUNITY
PORTION OF NE 1/4 SECTION 11
T20N - R20E

BOOK 522

191

COMMON AREA A

528-12

