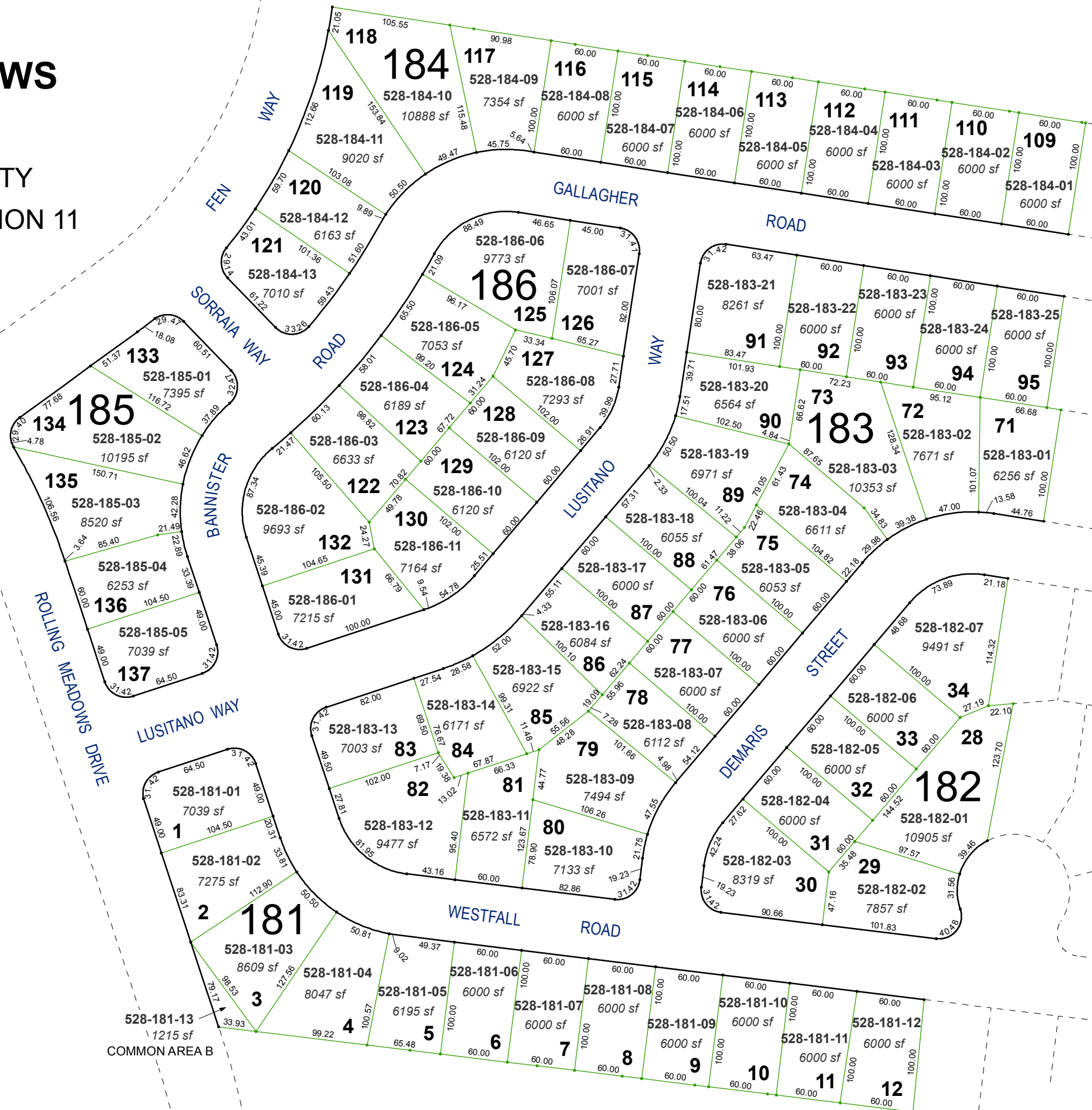


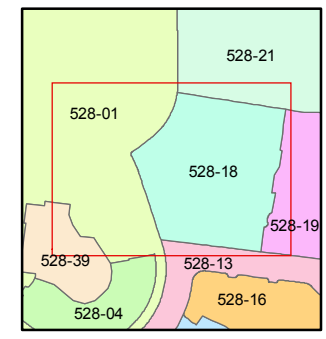
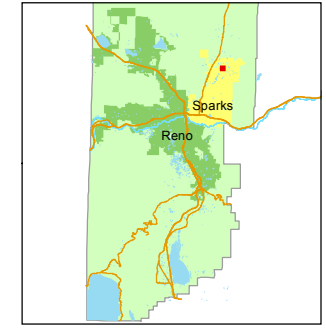
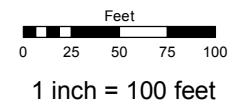
**(#4545)  
PIONEER MEADOWS  
VILLAGE III  
UNIT 1**  
A PLANNED COMMUNITY  
PORTION OF NE 1/4 SECTION 11  
T20N - R20E



Assessor's Map Number  
**528-18**

STATE OF NEVADA  
**WASHOE COUNTY**  
ASSESSOR'S OFFICE  
Michael E. Clark, Assessor

1001 East Ninth Street  
Building D  
Reno, Nevada 89512  
(775) 328-2231



created by: JKF 02/22/2017  
last updated: \_\_\_\_\_  
area previously shown on map(s)  
528-01

NOTE: This map was prepared for the use of the Washoe County Assessor for assessment and illustrative purposes only. It does not represent a survey of the premises. No liability is assumed as to the sufficiency or accuracy of the data delineated hereon.