

**(#4387)**  
**PIONEER MEADOWS VILLAGE II**  
**UNIT 1**

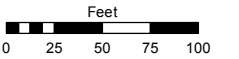
A PLANNED COMMUNITY  
 PORTION OF E 1/2 SECTION 11  
 T20N - R20E

Assessor's Map Number

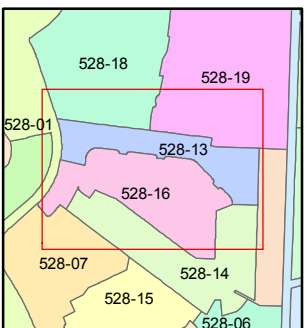
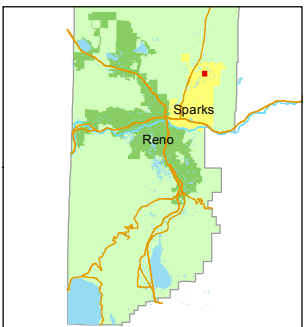
**528-13**

STATE OF NEVADA  
**WASHOE COUNTY**  
 ASSESSOR'S OFFICE  
 Michael E. Clark, Assessor

1001 East Ninth Street  
 Building D  
 Reno, Nevada 89512  
 (775) 328-2231



1 inch = 100 feet



created by: JKF 03/02/2017

last updated: \_\_\_\_\_

area previously shown on map(s)

528-01

NOTE: This map was prepared for the use of the Washoe County Assessor for assessment and illustrative purposes only. It does not represent a survey of the premises. No liability is assumed as to the sufficiency or accuracy of the data delineated hereon.

