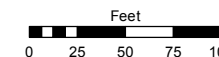


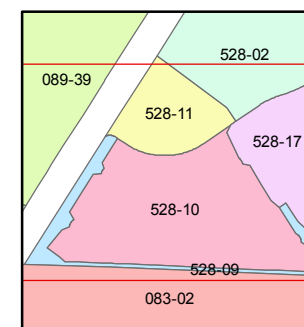
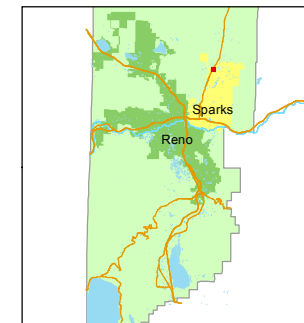
(# 4344) TIERRA DEL SOL - PHASE 1 PORTIONS OF THE SE 1/4 OF THE SW 1/4 AND THE W 1/2 OF THE SE 1/4 OF SEC. 3 T20N - R20E

STATE OF NEVADA
WASHOE COUNTY
ASSESSOR'S OFFICE
Michael E. Clark, Assessor

1001 East Ninth Street
Building D
Reno, Nevada 89512
(775) 328-2231



1 inch = 100 feet

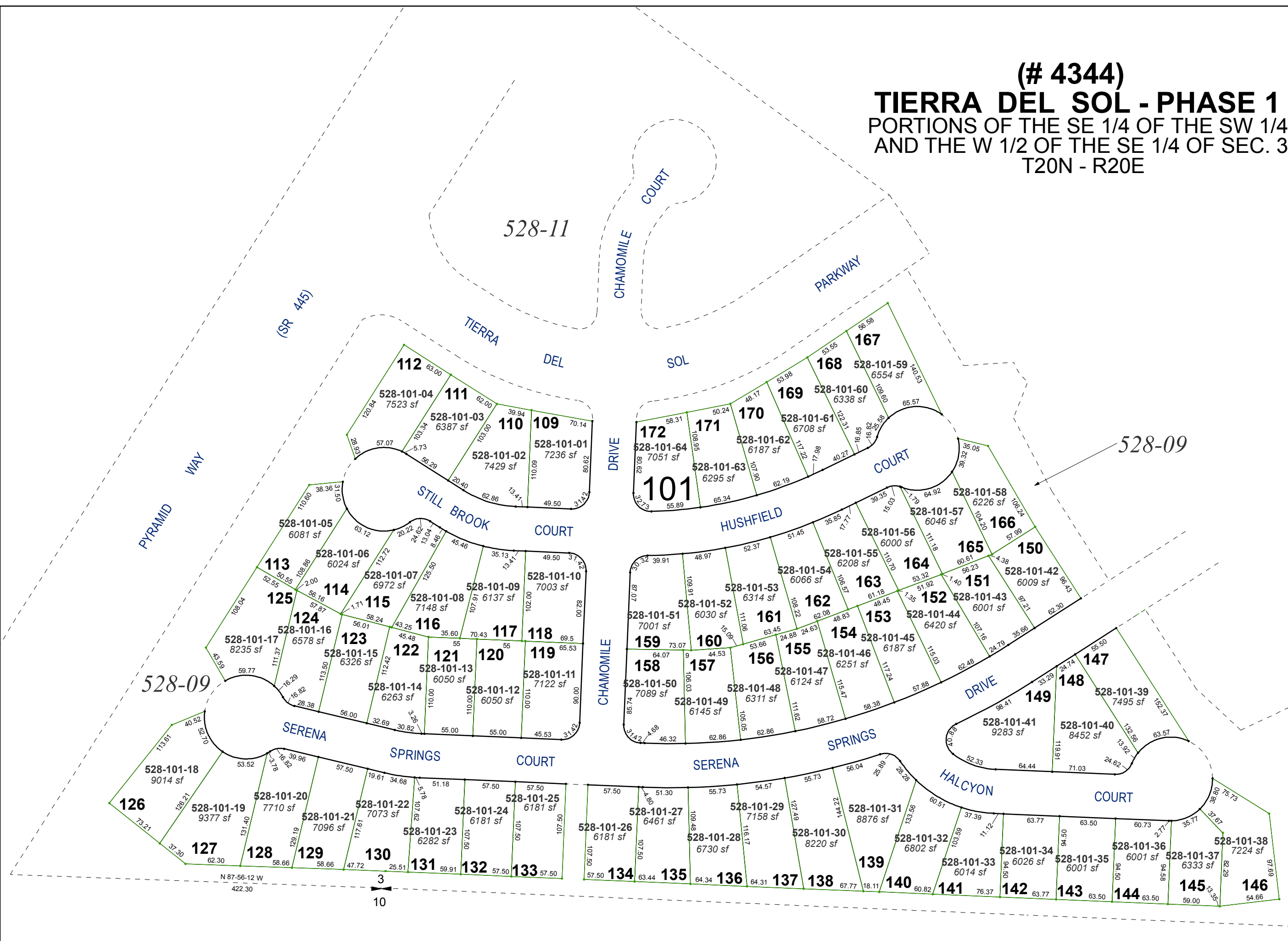


created by: JKF 02/16/2017

last updated: _____

area previously shown on map(s)
528-02

NOTE: This map was prepared for the use of the Washoe County Assessor for assessment and illustrative purposes only. It does not represent a survey of the premises. No liability is assumed as to the sufficiency or accuracy of the data delineated hereon.



N 87-56-12 W
422.30
3
10