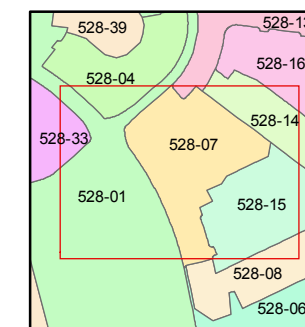
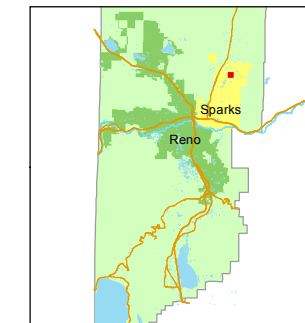


STATE OF NEVADA
WASHOE COUNTY
ASSESSOR'S OFFICE
Michael E. Clark, Assessor

1001 East Ninth Street
Building D
Reno, Nevada 89512
(775) 328-2231



1 inch = 100 feet



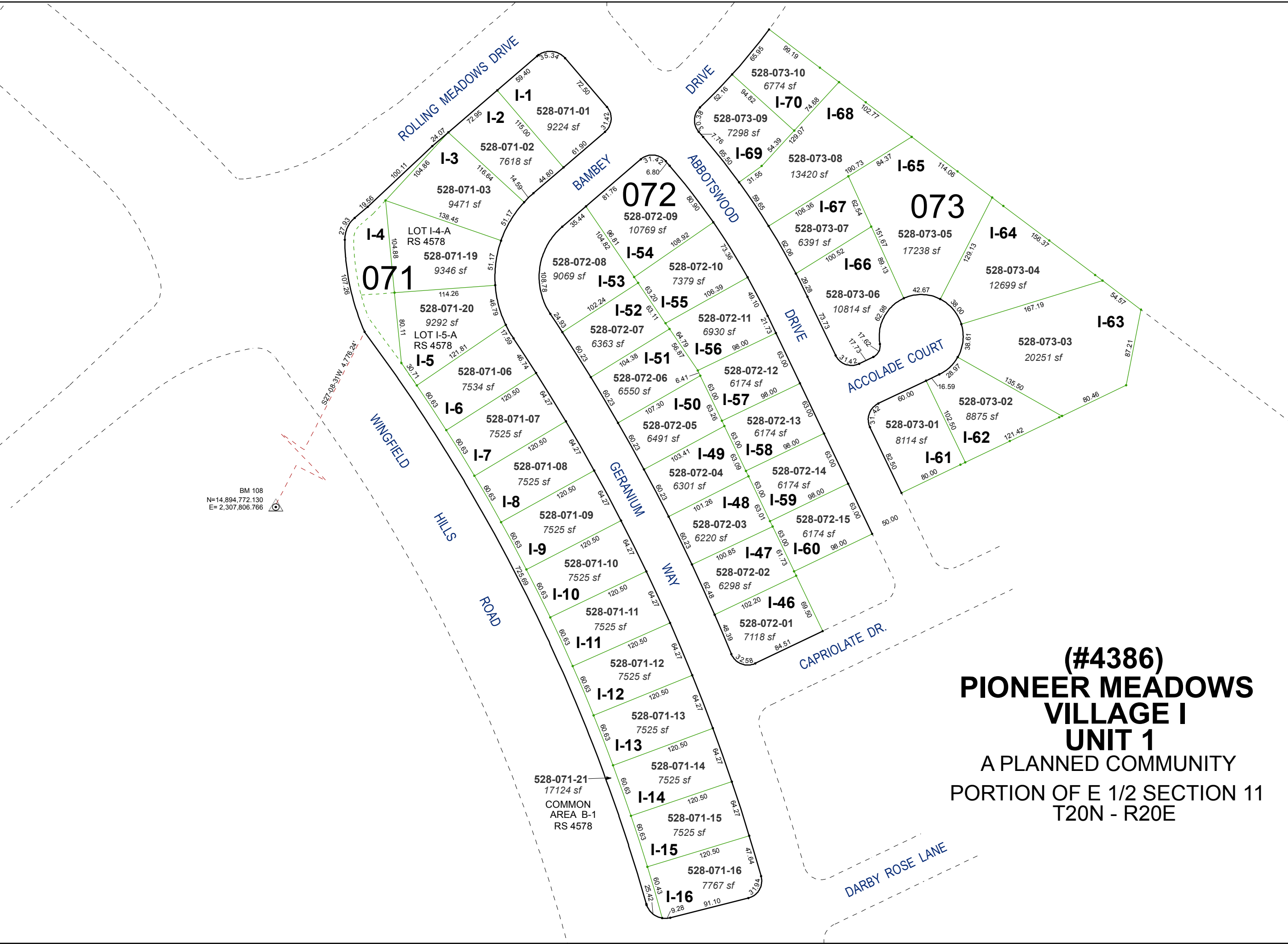
created by: JKF 02/16/2017

last updated: _____

area previously shown on map(s)

528-01

NOTE: This map was prepared for the use of the Washoe County Assessor for assessment and illustrative purposes only. It does not represent a survey of the premises. No liability is assumed as to the sufficiency or accuracy of the data delineated hereon.



BM 108
N=14,894,772.130
E= 2,307,806.766

**(#4386)
PIONEER MEADOWS
VILLAGE I
UNIT 1**
A PLANNED COMMUNITY
PORTION OF E 1/2 SECTION 11
T20N - R20E