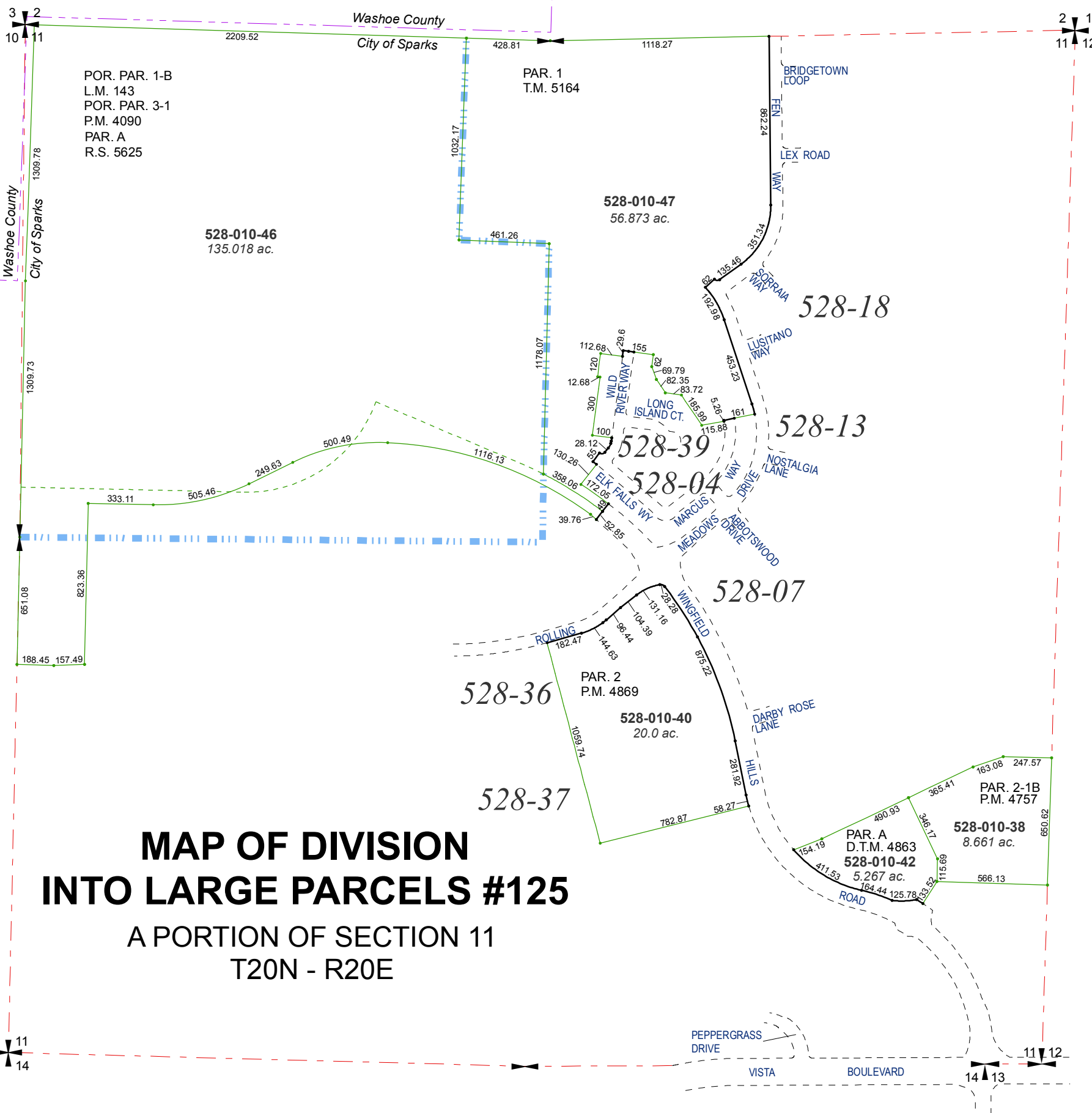


# MAP OF DIVISION INTO LARGE PARCELS #143



# MAP OF DIVISION INTO LARGE PARCELS #125

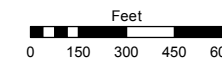
A PORTION OF SECTION 11  
T20N - R20E

Assessor's Map Number

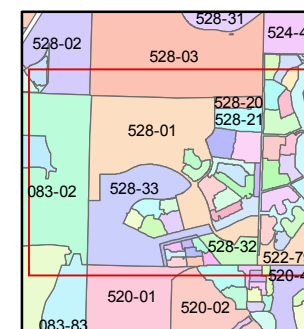
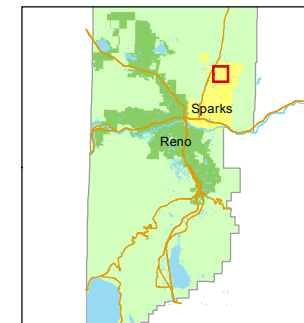
**528-01**

STATE OF NEVADA  
**WASHOE COUNTY**  
**ASSESSOR'S OFFICE**  
Michael E. Clark, Assessor

1001 East Ninth Street  
Building D  
Reno, Nevada 89512  
(775) 328-2231



1 inch = 600 feet



created by: NLH 01/04/2012

last updated: EMG 4/13/15 EMG 6/9/16

area previously shown on map(s)

083-02, 528-33

NOTE: This map was prepared for the use of the Washoe County Assessor for assessment and illustrative purposes only. It does not represent a survey of the premises. No liability is assumed as to the sufficiency or accuracy of the data delineated hereon.