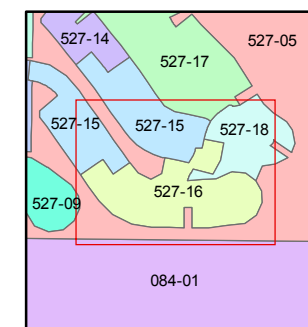
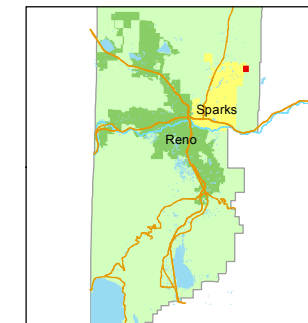


STATE OF NEVADA
WASHOE COUNTY
ASSESSOR'S OFFICE
Michael E. Clark, Assessor

1001 East Ninth Street
Building D
Reno, Nevada 89512
(775) 328-2231



1 inch = 100 feet



created by: JKF 03/08/2017

last updated: _____

area previously shown on map(s)

527-05

NOTE: This map was prepared for the use of the Washoe County Assessor for assessment and illustrative purposes only. It does not represent a survey of the premises. No liability is assumed as to the sufficiency or accuracy of the data delineated hereon.

(#4738)
UPPER HIGHLANDS AT
CIMARRON EAST - PHASE 3
(NEW URBAN DISTRICT)
POR. OF THE NW 1/4 OF SEC. 5
T20N - R21E

