

Assessor's Map Number

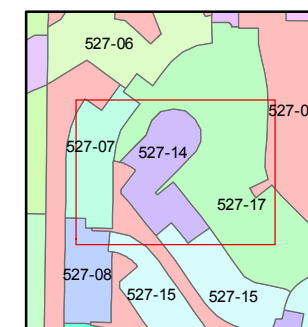
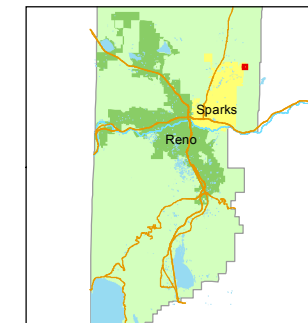
527-14

STATE OF NEVADA
WASHOE COUNTY
ASSESSOR'S OFFICE
Michael E. Clark, Assessor

1001 East Ninth Street
Building D
Reno, Nevada 89512
(775) 328-2231



1 inch = 100 feet



created by: JKF 03/08/2017

last updated: _____

area previously shown on map(s)

527-05

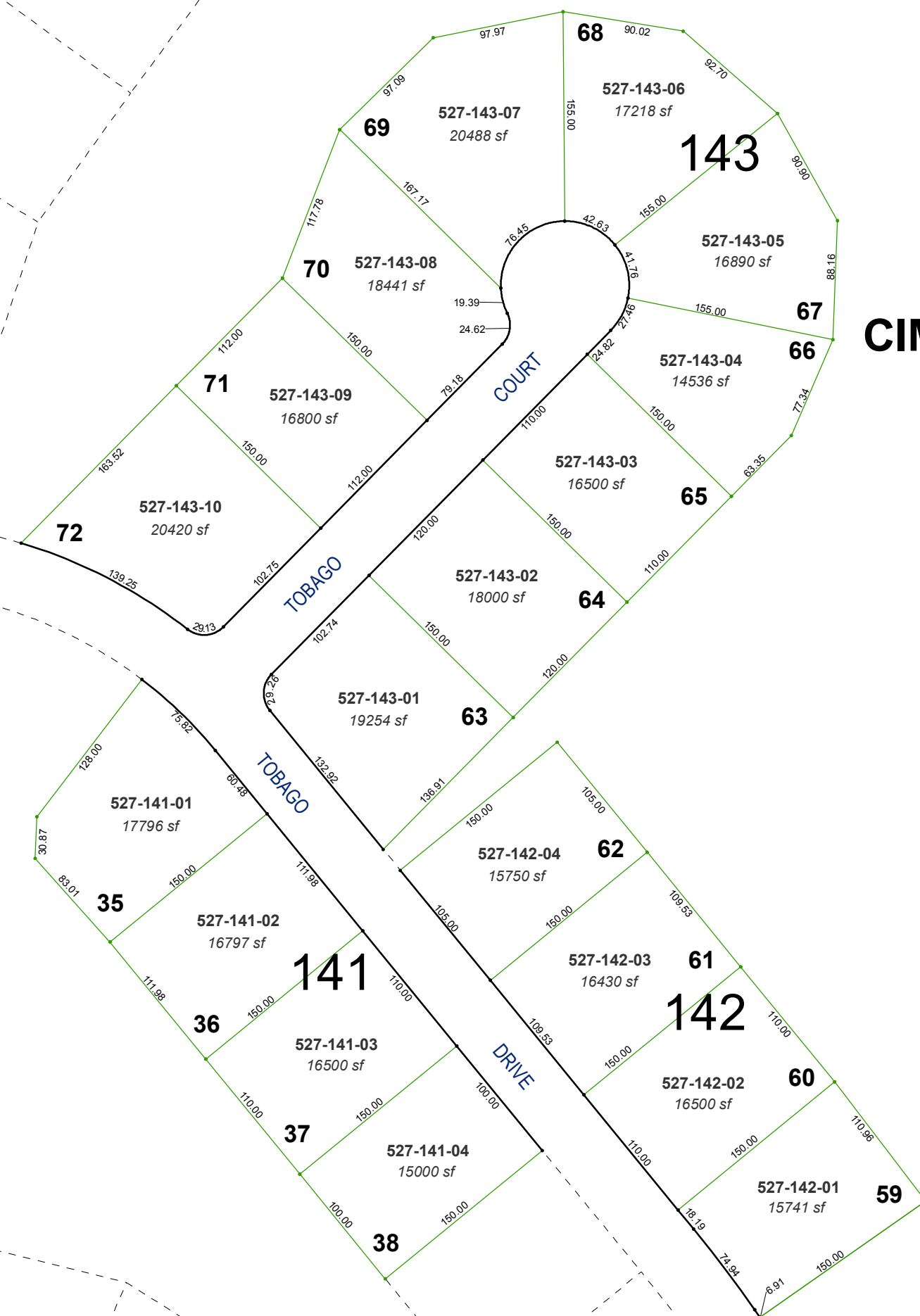
NOTE: This map was prepared for the use of the Washoe County Assessor for assessment and illustrative purposes only. It does not represent a survey of the premises. No liability is assumed as to the sufficiency or accuracy of the data delineated hereon.

(#4738)
UPPER HIGHLANDS AT
CIMARRON EAST - PHASE 3
(NEW URBAN DISTRICT)
POR. OF THE NW 1/4 OF SEC. 5
T20N - R21E

DRIVE

FOX

DESERT



143

68

69

70

71

72

35

36

37

38

141

63

64

65

66

67

60

142

61

59

COURT

TOBAGO

TOBAGO

DRIVE

527-143-07
20488 sf

527-143-06
17218 sf

527-143-08
18441 sf

527-143-09
16800 sf

527-143-10
20420 sf

527-141-01
17796 sf

527-141-02
16797 sf

527-141-03
16500 sf

527-141-04
15000 sf

527-143-01
19254 sf

527-143-02
18000 sf

527-143-03
16500 sf

527-143-05
16890 sf

527-143-04
14536 sf

527-142-04
15750 sf

527-142-03
16430 sf

527-142-02
16500 sf

527-142-01
15741 sf