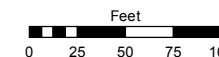
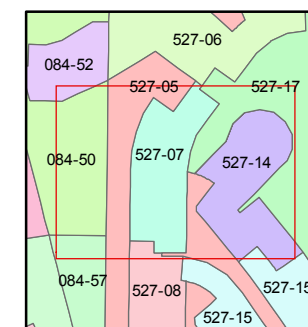
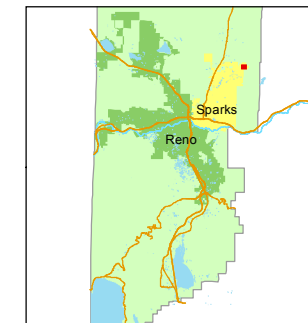


STATE OF NEVADA
WASHOE COUNTY
ASSESSOR'S OFFICE
Michael E. Clark, Assessor

1001 East Ninth Street
Building D
Reno, Nevada 89512
(775) 328-2231



1 inch = 100 feet



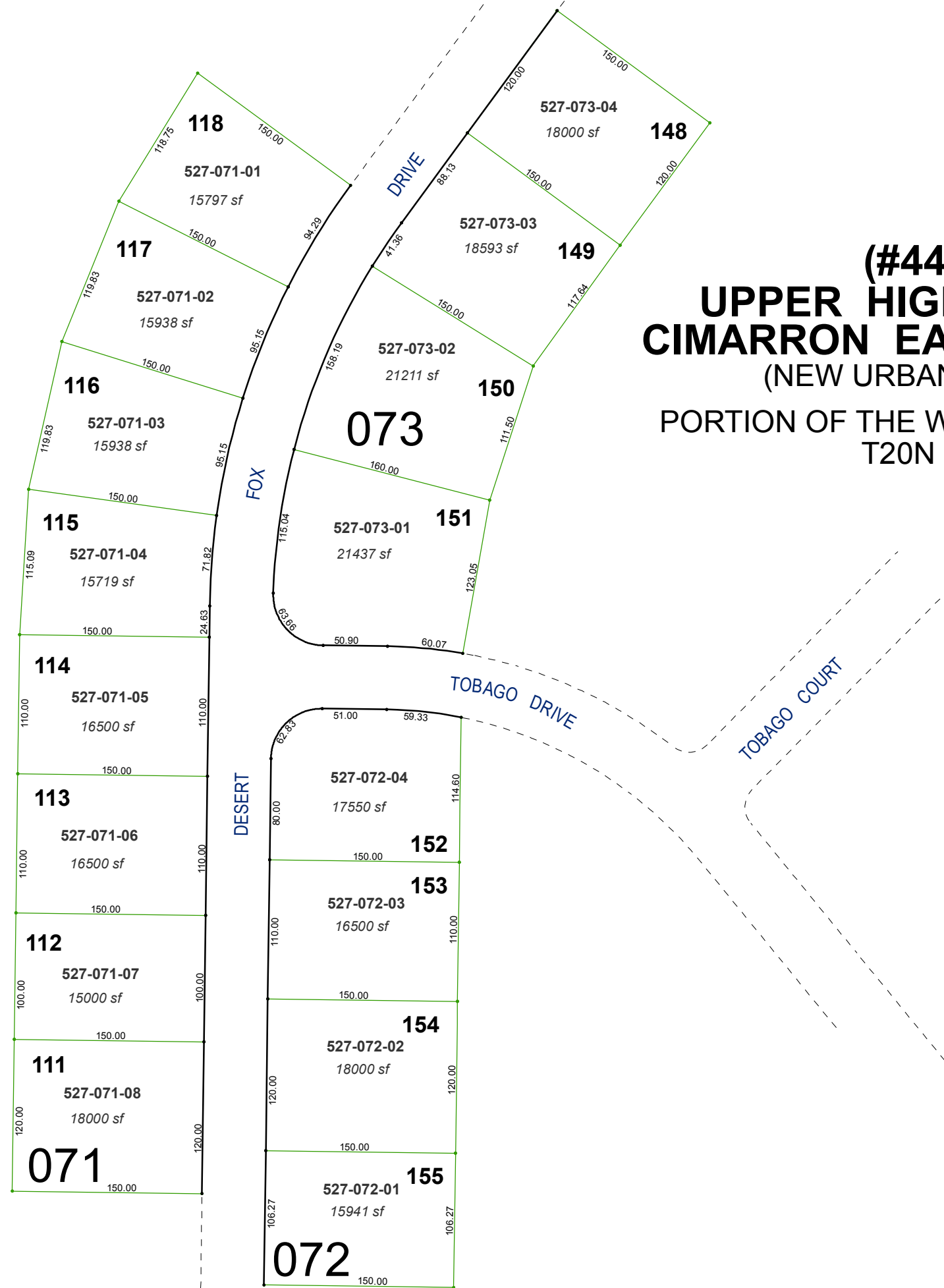
created by: JKF 03/07/2017

last updated: _____

area previously shown on map(s)

084-40

NOTE: This map was prepared for the use of the Washoe County Assessor for assessment and illustrative purposes only. It does not represent a survey of the premises. No liability is assumed as to the sufficiency or accuracy of the data delineated hereon.



(#4450)
UPPER HIGHLANDS AT
CIMARRON EAST - PHASE 1
(NEW URBAN DISTRICT)
PORTION OF THE W 1/2 OF SECTION 5
T20N - R21E