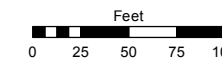
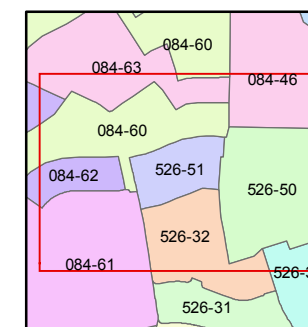
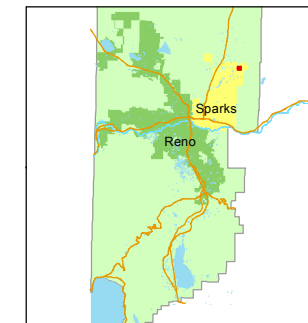


STATE OF NEVADA  
**WASHOE COUNTY**  
ASSESSOR'S OFFICE  
Joshua G. Wilson, Assessor

1001 East Ninth Street  
Building D  
Reno, Nevada 89512  
(775) 328-2231



1 inch = 100 feet



created by: EMG 3/12/2014

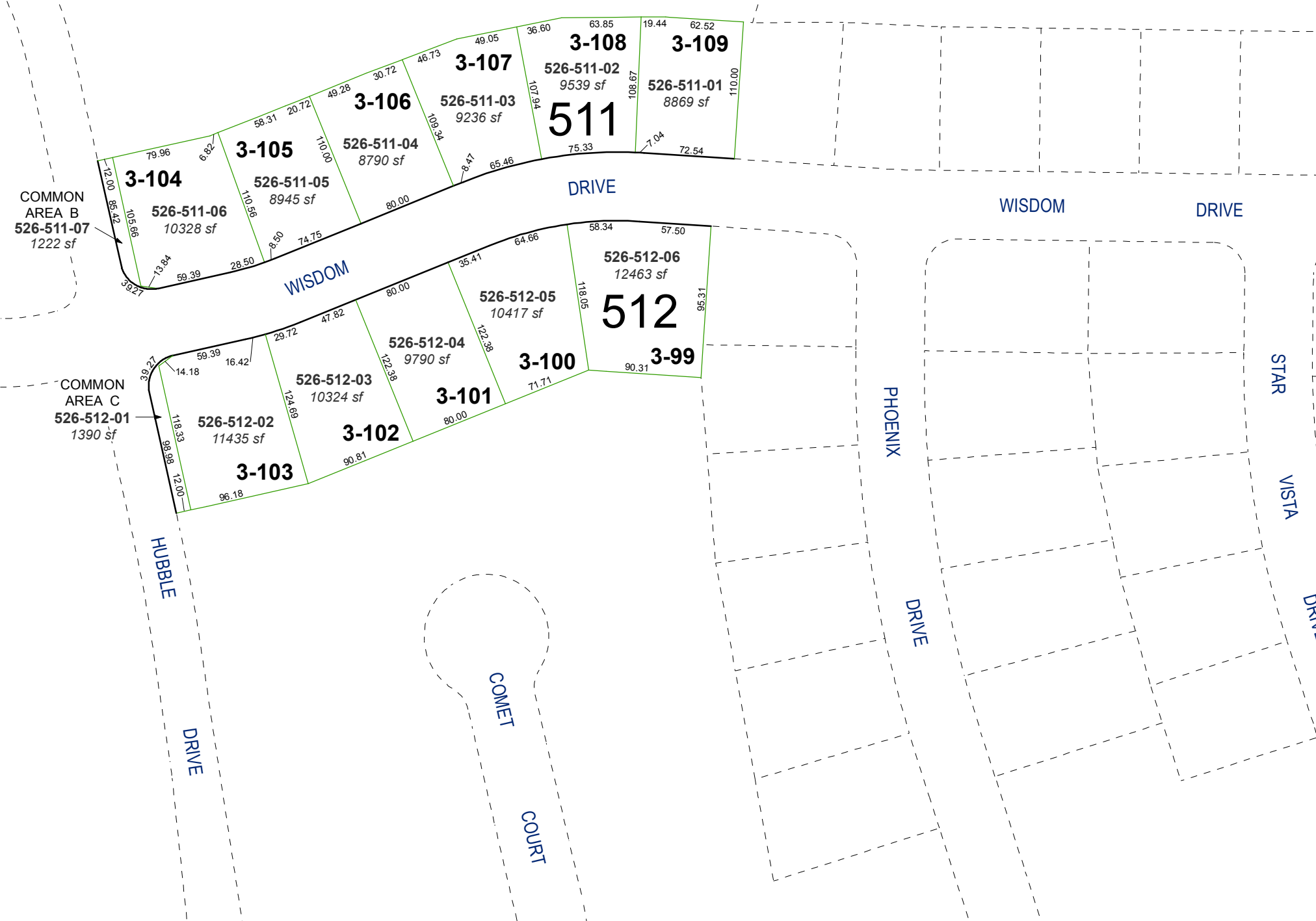
last updated: \_\_\_\_\_

area previously shown on map(s)

526-24

NOTE: This map was prepared for the use of the Washoe County Assessor for assessment and illustrative purposes only. It does not represent a survey of the premises. No liability is assumed as to the sufficiency or accuracy of the data delineated hereon.

**(#4638)**  
**THE FOOTHILLS AT WINGFIELD**  
**VILLAGE 3B**  
NEW URBAN DISTRICT  
PORTION OF THE SOUTH 1/2 OF SECTION 6  
T20N - R21E



COMMON AREA B  
526-511-07  
1222 sf

COMMON AREA C  
526-512-01  
1390 sf

ARCTURAS COURT