

(#4595)
THE FOOTHILLS AT WINGFIELD
VILLAGE 7B

NEW URBAN DISTRICT
 PORTION OF THE EAST 1/2 OF SECTION 7
 T20N - R21E

(#4635)
THE FOOTHILLS AT WINGFIELD
VILLAGE 7C
 NEW URBAN DISTRICT

(#4595)

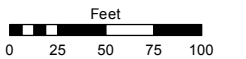
(#4635)

Assessor's Map Number

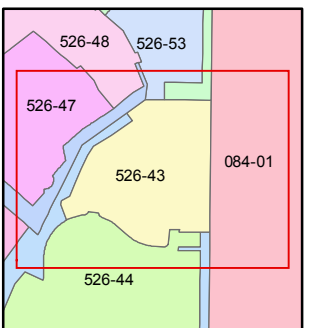
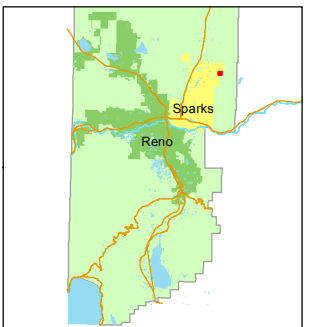
526-43

STATE OF NEVADA
WASHOE COUNTY
ASSESSOR'S OFFICE
 Joshua G. Wilson, Assessor

1001 East Ninth Street
 Building D
 Reno, Nevada 89512
 (775) 328-2231



1 inch = 100 feet



created by: EMG 3/10/2014

last updated: _____

area previously shown on map(s)
526-33 & 526-42

NOTE: This map was prepared for the use of the Washoe County Assessor for assessment and illustrative purposes only. It does not represent a survey of the premises. No liability is assumed as to the sufficiency or accuracy of the data delineated hereon.

526-46

526-42

526-52

← 526-42

