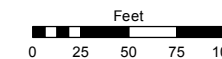
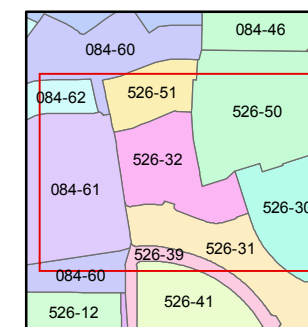
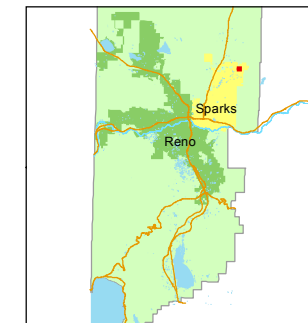


STATE OF NEVADA
WASHOE COUNTY
ASSESSOR'S OFFICE
Joshua G. Wilson, Assessor

1001 East Ninth Street
Building D
Reno, Nevada 89512
(775) 328-2231



1 inch = 100 feet



created by: EMG 3/05/2014

last updated: _____

area previously shown on map(s)

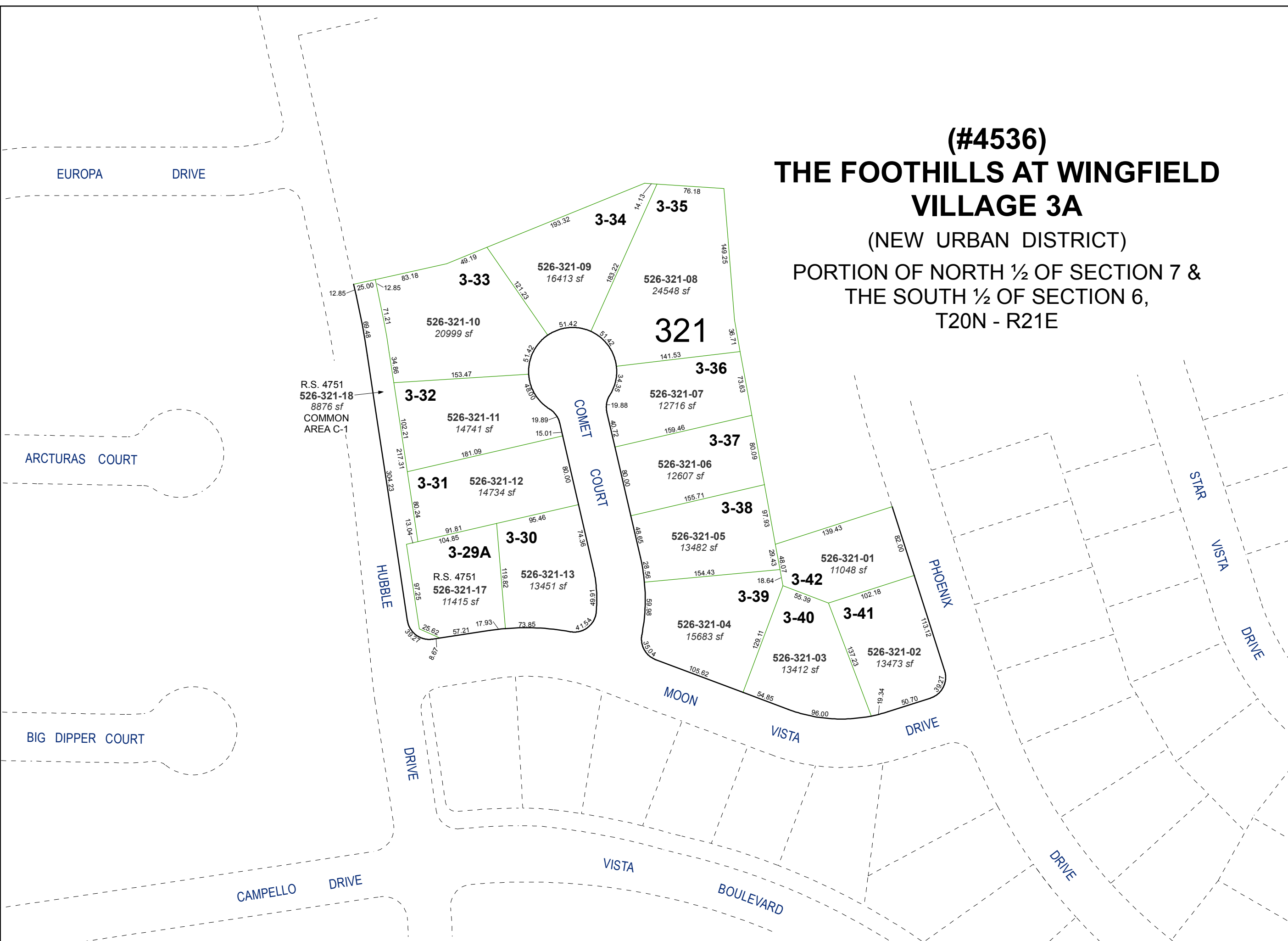
526-01

NOTE: This map was prepared for the use of the Washoe County Assessor for assessment and illustrative purposes only. It does not represent a survey of the premises. No liability is assumed as to the sufficiency or accuracy of the data delineated hereon.

(#4536) THE FOOTHILLS AT WINGFIELD VILLAGE 3A

(NEW URBAN DISTRICT)

PORTION OF NORTH 1/2 OF SECTION 7 &
THE SOUTH 1/2 OF SECTION 6,
T20N - R21E



R.S. 4751
526-321-18
8876 sf
COMMON
AREA C-1

R.S. 4751
526-321-17
11415 sf

526-321-13
13451 sf

526-321-12
14734 sf

526-321-11
14741 sf

526-321-10
20999 sf

526-321-09
16413 sf

526-321-08
24548 sf

526-321-07
12716 sf

526-321-06
12607 sf

526-321-05
13482 sf

526-321-04
15683 sf

526-321-03
13412 sf

526-321-02
13473 sf

526-321-01
11048 sf

526-321-321