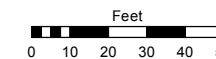


Assessor's Map Number

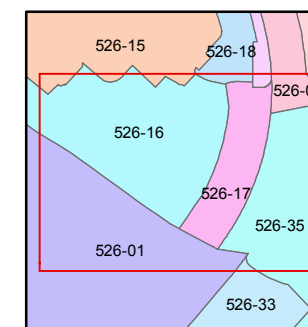
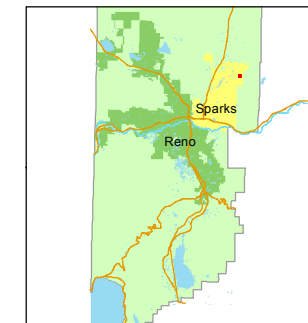
526-17

STATE OF NEVADA
WASHOE COUNTY
ASSESSOR'S OFFICE
Joshua G. Wilson, Assessor

1001 East Ninth Street
Building D
Reno, Nevada 89512
(775) 328-2231



1 inch = 50 feet



created by: EMG 2/25/2014

last updated: _____

area previously shown on map(s)

526-01

NOTE: This map was prepared for the use of the Washoe County Assessor for assessment and illustrative purposes only. It does not represent a survey of the premises. No liability is assumed as to the sufficiency or accuracy of the data delineated hereon.

SOUTH LATOUR

PANTHER CREEK DRIVE

GLOBE

526-13

DRIVE

BOULEVARD

VISTA

ANTINORI DRIVE

ANTINORI DRIVE

LOT G1 67.28
P.M. 4720 526-171-12
85.97 1457 sf 19.10

526-171-10
3486 sf

13-31

526-171-09
3116 sf

13-32

526-171-08
3116 sf

13-33

526-171-07
3383 sf

13-34

526-171-06
3116 sf

13-35

526-171-05
3116 sf

13-36

526-171-04
3383 sf

13-37

526-171-03
3069 sf

13-38

526-171-02
3140 sf

13-39

526-171-01
3747 sf

13-40

526-171-13
11630 sf

LOT G2
P.M. 4720

171

**(#4423)
THE FOOTHILLS AT WINGFIELD
VILLAGE 13A**

PORTION OF SECTION 7
T20N - R21E

NOTE: STREET APN IS PARCELED ON PAGE 13.
ALL STREETS FOR TRACT MAP 4423 ARE PRIVATE.