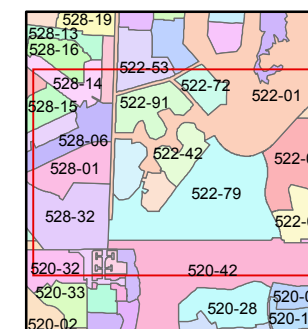
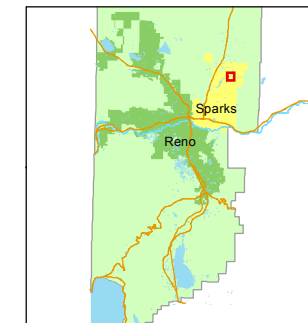


1 inch = 300 feet



created by: EMG 6/5/2014

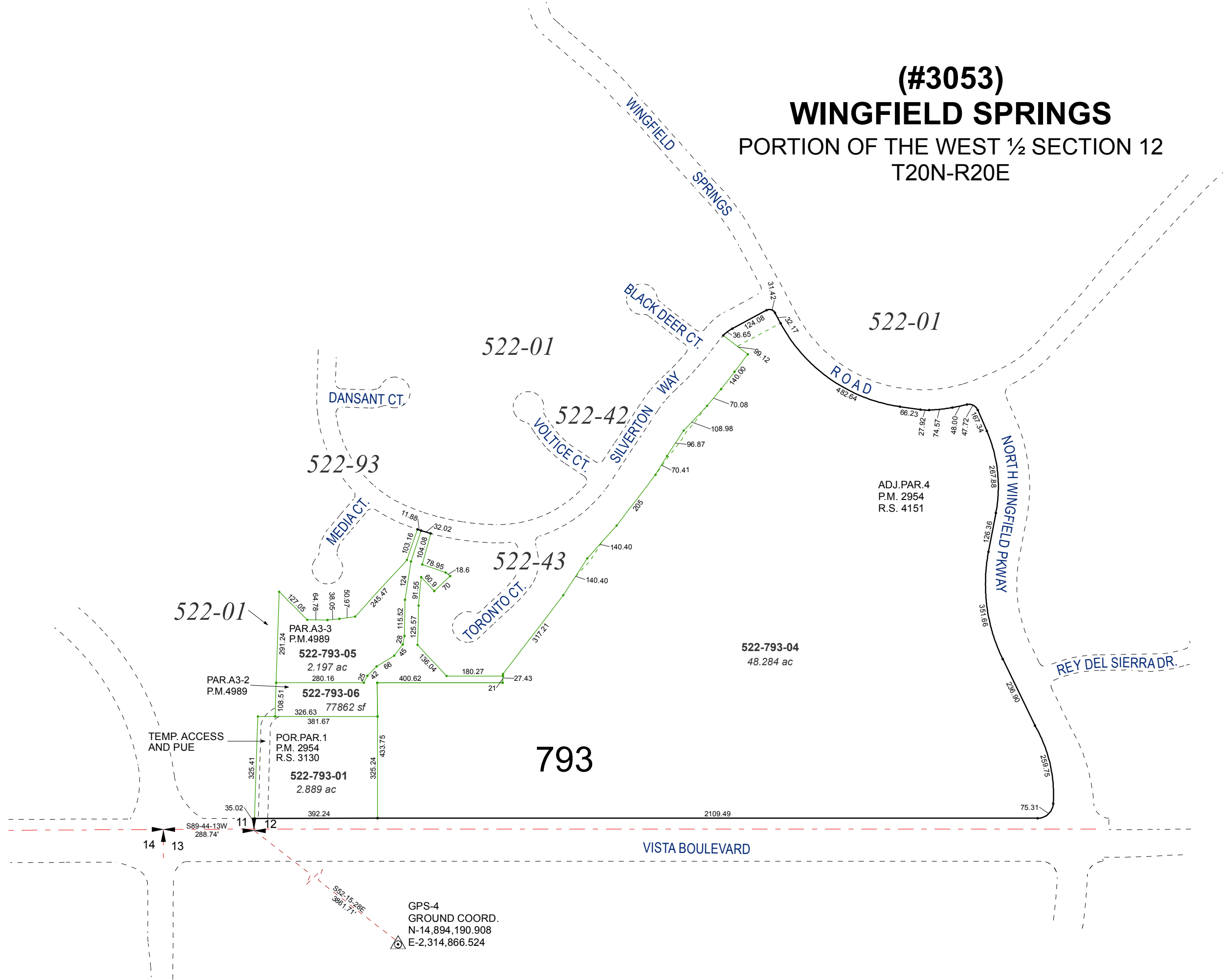
last updated: \_\_\_\_\_

area previously shown on map(s)

522-01

NOTE: This map was prepared for the use of the Washoe County Assessor for assessment and illustrative purposes only. It does not represent a survey of the premises. No liability is assumed as to the sufficiency or accuracy of the data delineated hereon.

**(#3053)**  
**WINGFIELD SPRINGS**  
PORTION OF THE WEST 1/2 SECTION 12  
T20N-R20E



GPS-4  
GROUND COORD.  
N-14,894,190.908  
E-2,314,866.524