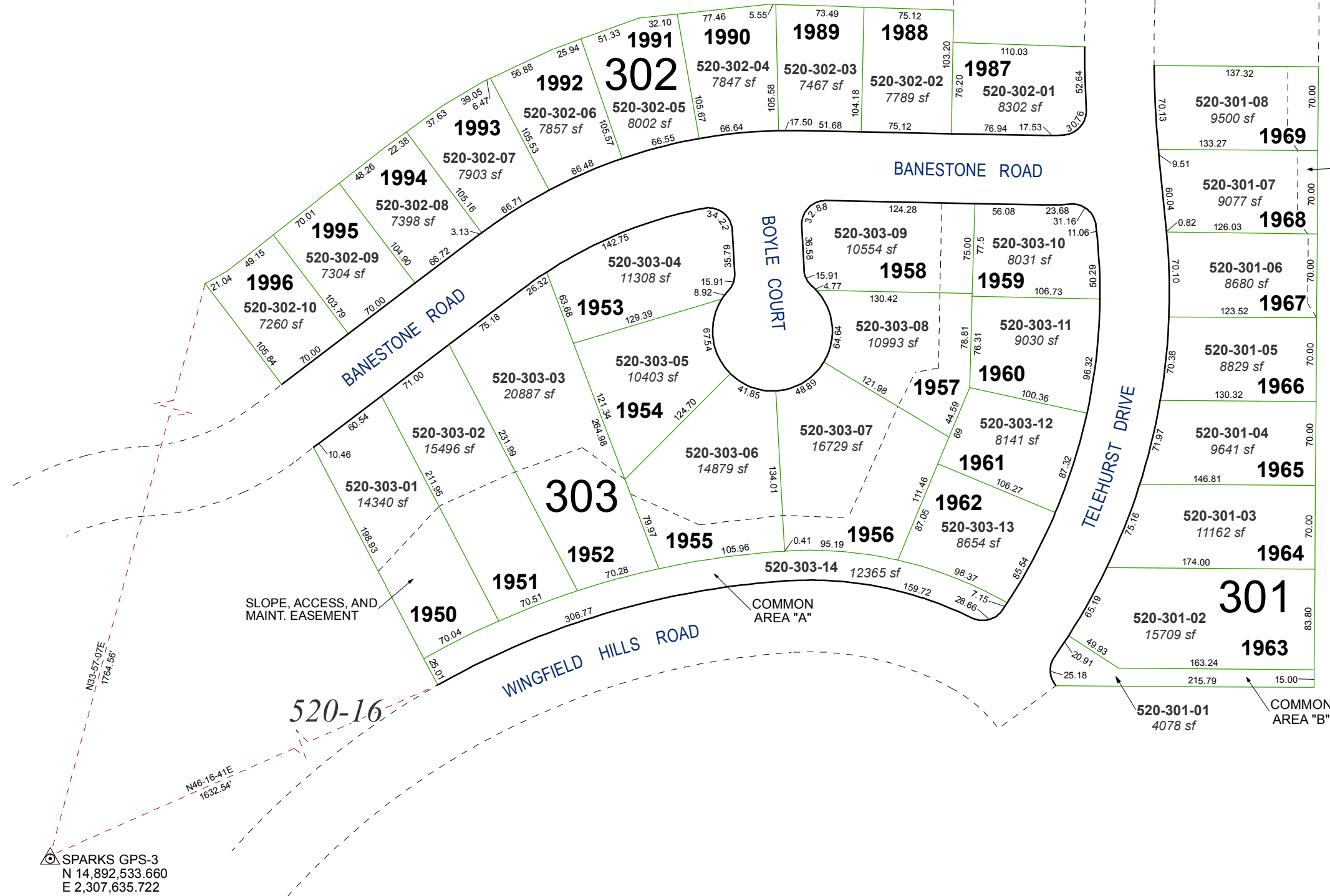


(#4194) WINGFIELD SPRINGS UNIT NINETEEN-B PHASE TWO

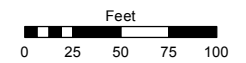
A PLANNED COMMUNITY
PORTION OF NORTH 1/2 SECTION 13
T20N - R20E



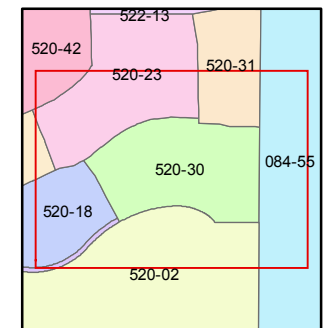
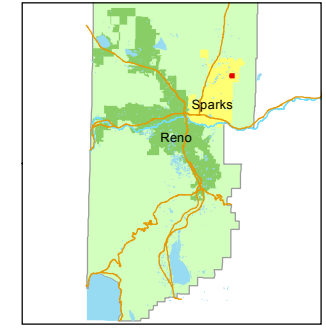
Assessor's Map Number
520-30

STATE OF NEVADA
WASHOE COUNTY
ASSESSOR'S OFFICE
Joshua G. Wilson, Assessor

1001 East Ninth Street
Building D
Reno, Nevada 89512
(775) 328-2231



1 inch = 100 feet



created by: EMG 4/2/2014

last updated: _____

area previously shown on map(s)
520-16

NOTE: This map was prepared for the use of the Washoe County Assessor for assessment and illustrative purposes only. It does not represent a survey of the premises. No liability is assumed as to the sufficiency or accuracy of the data delineated herein.

SLOPE, ACCESS, AND MAINT. EASEMENT

SLOPE, ACCESS, AND MAINT. EASEMENT

COMMON AREA "A"

COMMON AREA "B"