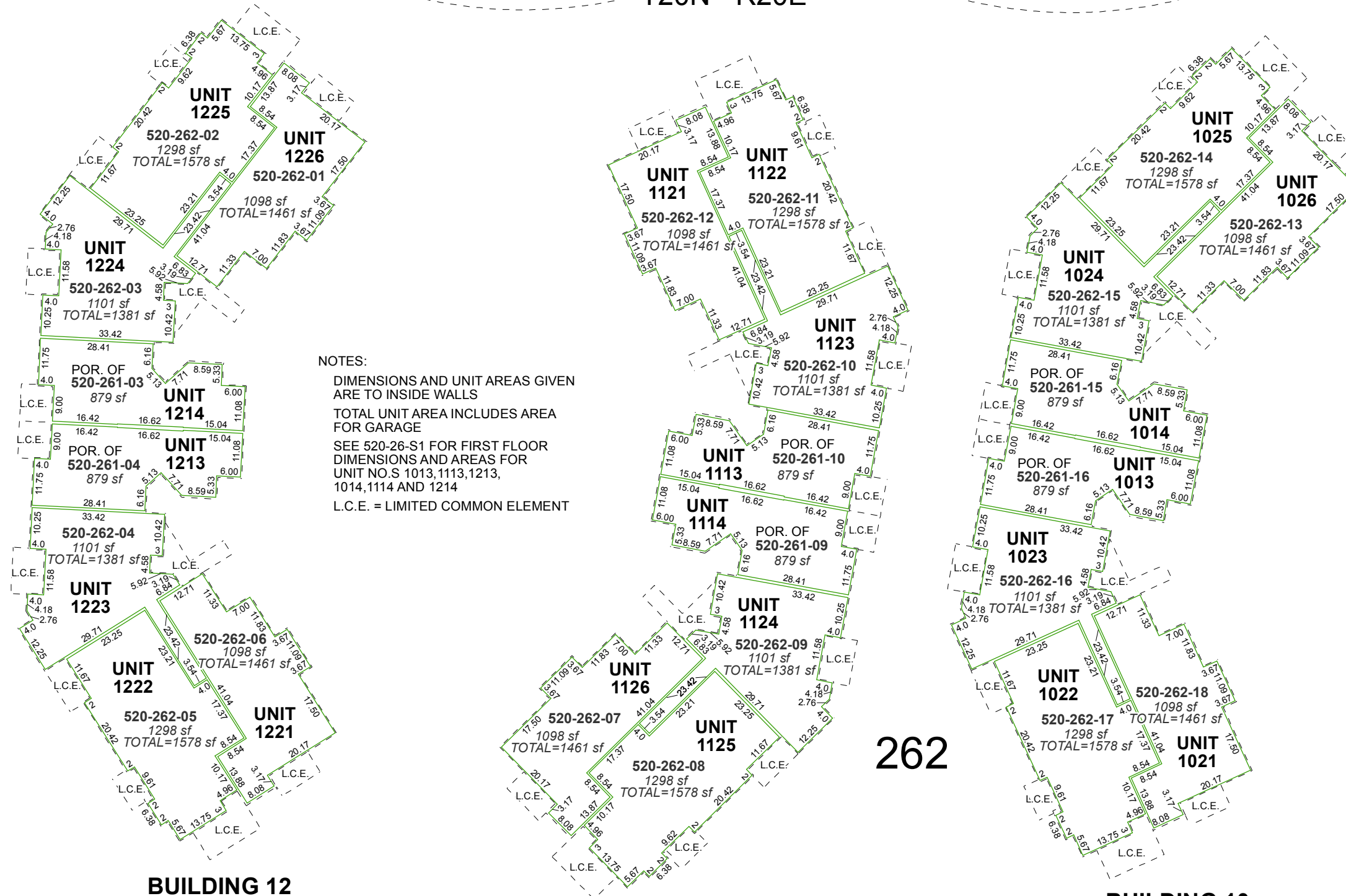


# (#4095) WINGFIELD SPRINGS UNIT TWENTY-FOUR C PHASE TWO

A CONDOMINIUM - PLANNED DEVELOPMENT  
PORTION OF NW ¼ SECTION 13  
T20N - R20E

INGLESTON DRIVE (PRIVATE)

WINGFIELD HILLS ROAD



NOTES:  
DIMENSIONS AND UNIT AREAS GIVEN ARE TO INSIDE WALLS  
TOTAL UNIT AREA INCLUDES AREA FOR GARAGE  
SEE 520-26-S1 FOR FIRST FLOOR DIMENSIONS AND AREAS FOR UNIT NO.S 1013,1113,1213, 1014,1114 AND 1214  
L.C.E. = LIMITED COMMON ELEMENT

**BUILDING 12**

**BUILDING 11**

**BUILDING 10**

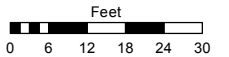
## SECOND FLOOR UNITS

Assessor's Map Number

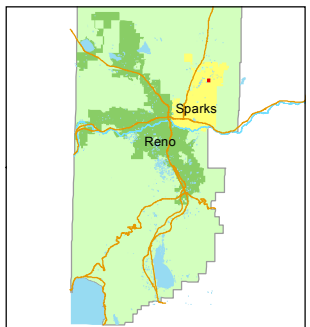
**520-26-S2**

STATE OF NEVADA  
**WASHOE COUNTY**  
ASSESSOR'S OFFICE  
Joshua G. Wilson, Assessor

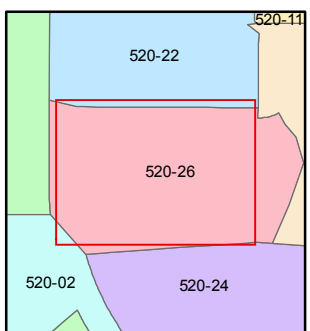
1001 East Ninth Street  
Building D  
Reno, Nevada 89512  
(775) 328-2231



1 inch = 30 feet



520-21-S1



created by: EMG 8/27/2014

last updated: \_\_\_\_\_

area previously shown on map(s)

520-02

NOTE: This map was prepared for the use of the Washoe County Assessor for assessment and illustrative purposes only. It does not represent a survey of the premises. No liability is assumed as to the sufficiency or accuracy of the data delineated hereon.