

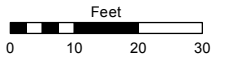
(#4095)
WINGFIELD SPRINGS
UNIT TWENTY-FOUR - C
PHASE TWO
 A CONDOMINIUM
 PLANNED DEVELOPMENT

(#3880)
WINGFIELD SPRINGS
UNIT TWENTY-FOUR - C
 A CONDOMINIUM
 PLANNED DEVELOPMENT
 POR. OF THE NW ¼ SEC. 13
 T20N - R20E

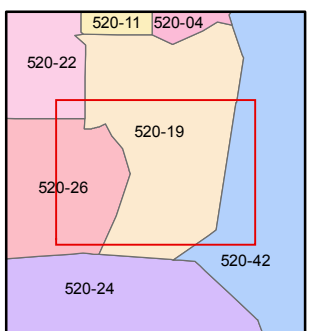
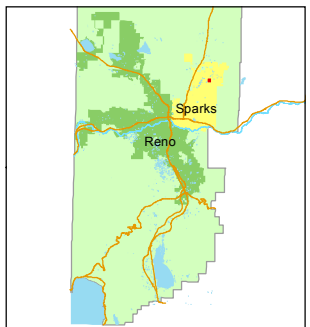
Assessor's Map Number
520-21

STATE OF NEVADA
WASHOE COUNTY
 ASSESSOR'S OFFICE
 Joshua G. Wilson, Assessor

1001 East Ninth Street
 Building D
 Reno, Nevada 89512
 (775) 328-2231



1 inch = 30 feet



created by: EMG 8/27/2014

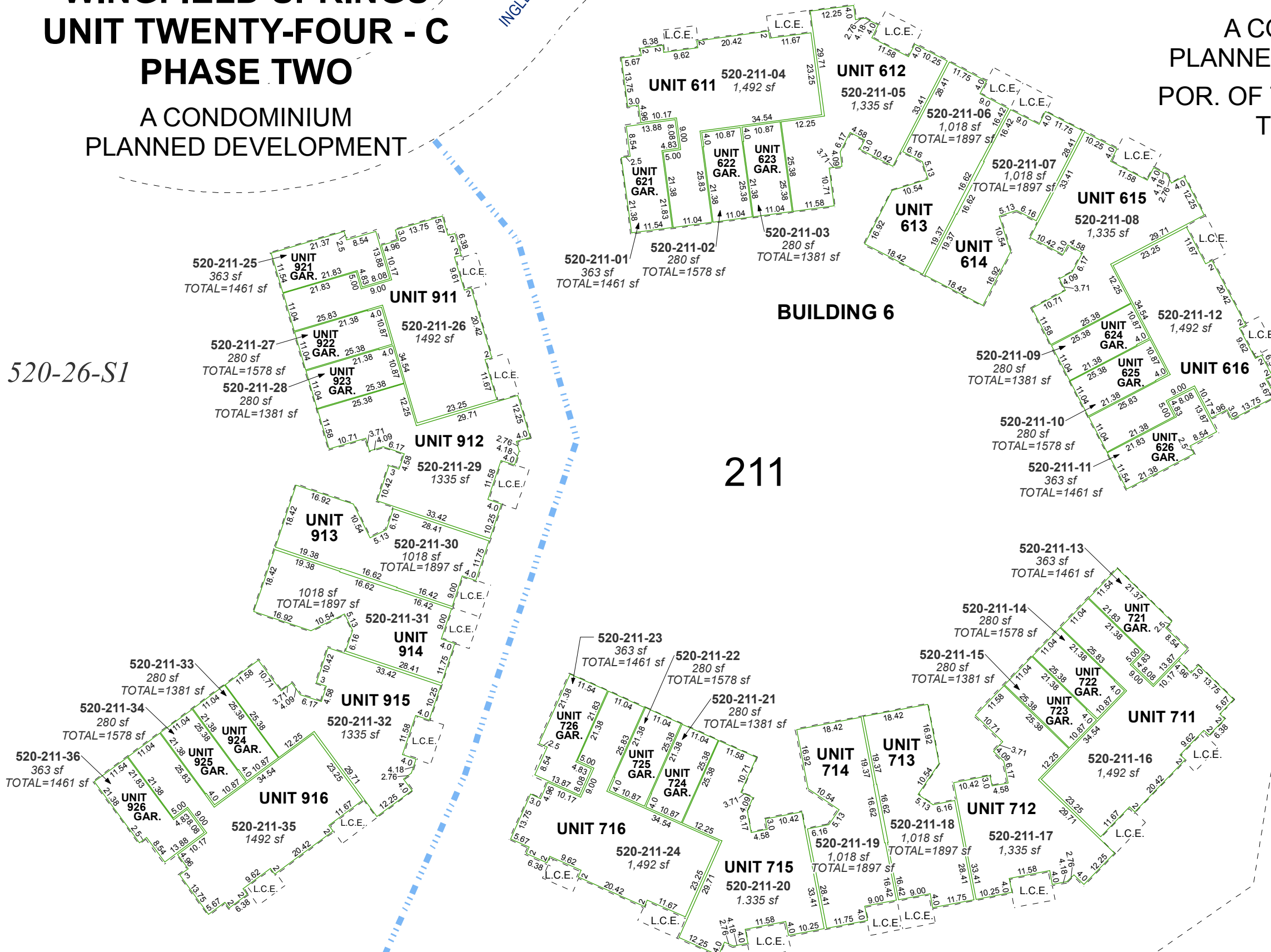
last updated: _____

area previously shown on map(s)

520-02

NOTE: This map was prepared for the use of the Washoe County Assessor for assessment and illustrative purposes only. It does not represent a survey of the premises. No liability is assumed as to the sufficiency or accuracy of the data delineated hereon.

520-26-S1



BUILDING 9

BUILDING 7

FIRST FLOOR UNITS

NOTES:
 DIMENSIONS AND UNIT AREAS GIVEN
 ARE TO INSIDE WALLS
 TOTAL UNIT AREA INCLUDES AREA
 FOR GARAGE
 SEE 520-21-S1 FOR SECOND FLOOR
 DIMENSIONS AND AREAS
 L.C.E. = LIMITED COMMON ELEMENT