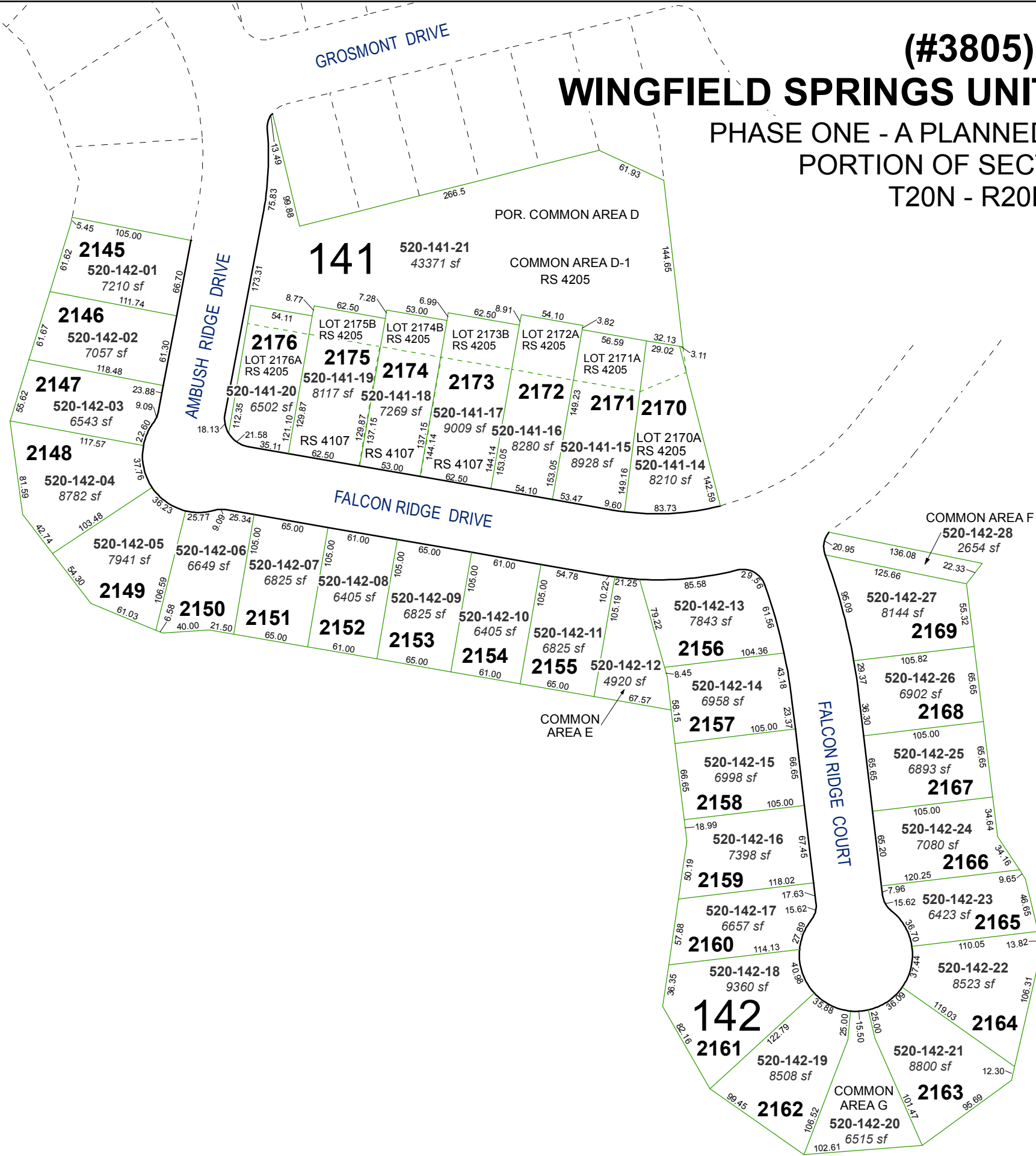


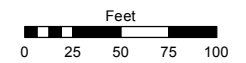
(#3805)
WINGFIELD SPRINGS UNIT TWENTY-ONE - A
 PHASE ONE - A PLANNED COMMUNITY
 PORTION OF SECTION 13
 T20N - R20E



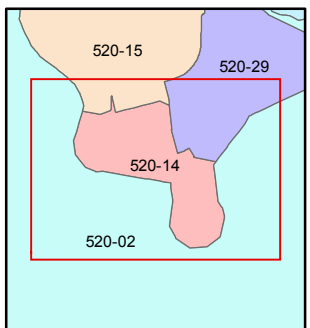
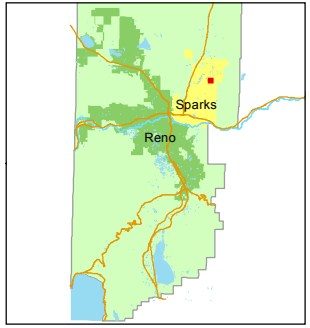
Assessor's Map Number
520-14

STATE OF NEVADA
WASHOE COUNTY
 ASSESSOR'S OFFICE
 Joshua G. Wilson, Assessor

1001 East Ninth Street
 Building D
 Reno, Nevada 89512
 (775) 328-2231



1 inch = 100 feet



created by: EG 3/26/2014
 last updated: _____
 area previously shown on map(s)
520-02

NOTE: This map was prepared for the use of the Washoe County Assessor for assessment and illustrative purposes only. It does not represent a survey of the premises. No liability is assumed as to the sufficiency or accuracy of the data delineated hereon.