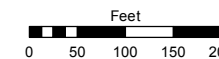


Assessor's Map Number

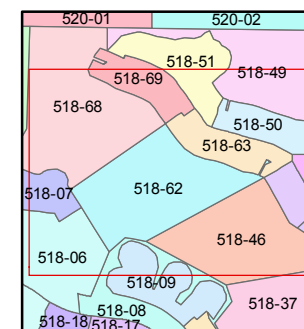
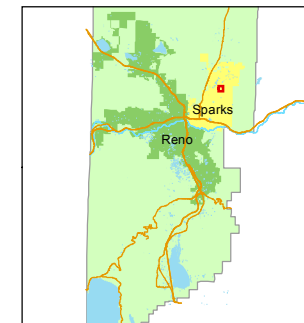
518-62

STATE OF NEVADA
WASHOE COUNTY
ASSESSOR'S OFFICE
Michael E. Clark, Assessor

1001 East Ninth Street
Building D
Reno, Nevada 89512
(775) 328-2231



1 inch = 200 feet



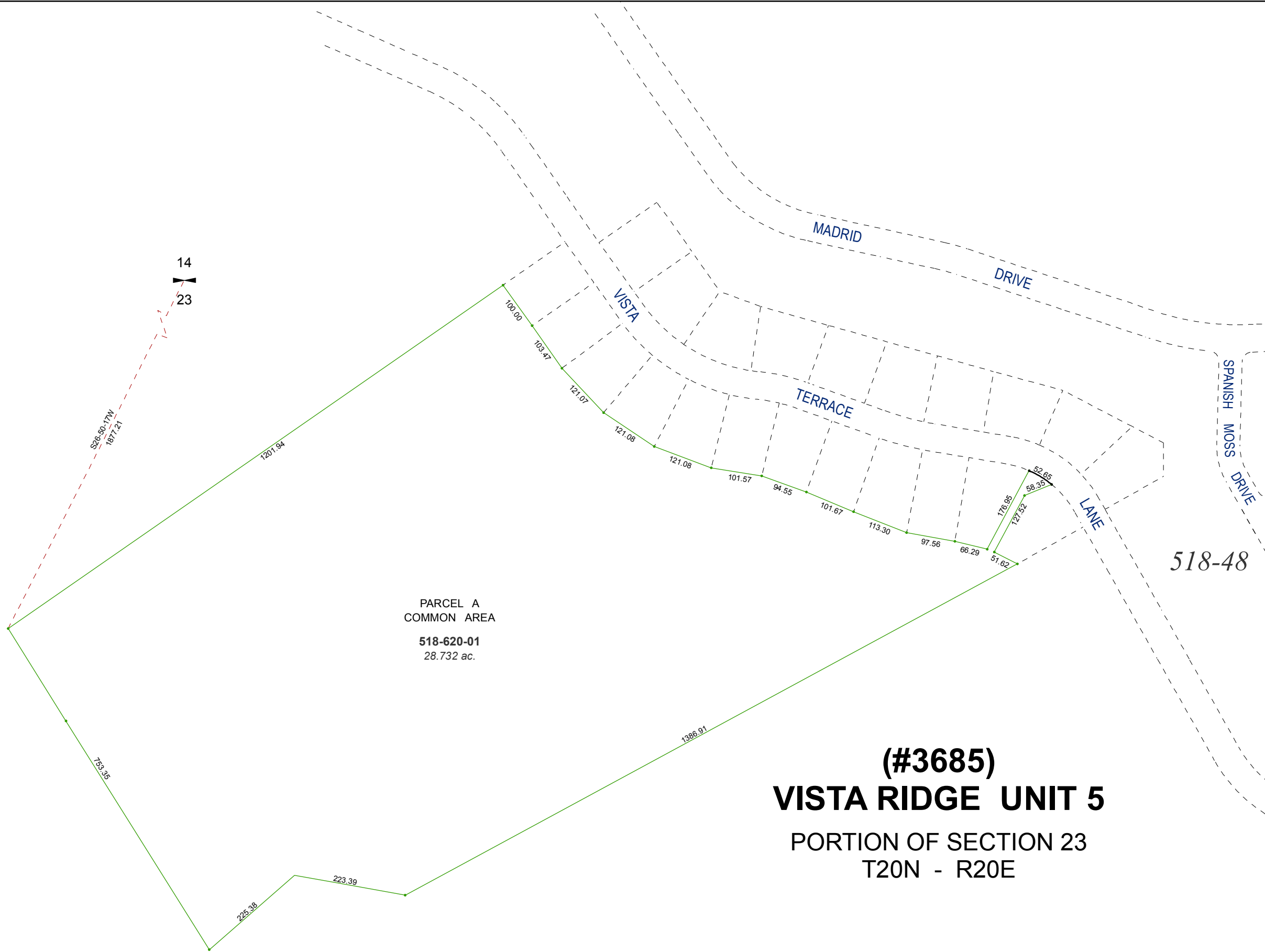
created by: SR 5/10/2016

last updated: _____

area previously shown on map(s)

518-13

NOTE: This map was prepared for the use of the Washoe County Assessor for assessment and illustrative purposes only. It does not represent a survey of the premises. No liability is assumed as to the sufficiency or accuracy of the data delineated hereon.



PARCEL A
COMMON AREA

518-620-01
28.732 ac.

**(#3685)
VISTA RIDGE UNIT 5**

PORTION OF SECTION 23
T20N - R20E

518-48

14

23

S28-50.17W
1677.21

1201.94

100.00

17.30

121.07

121.08

121.08

101.57

94.55

101.67

113.30

97.56

66.29

51.62

176.95

127.32

52.65

58.35

753.25

1386.91

225.38

223.39