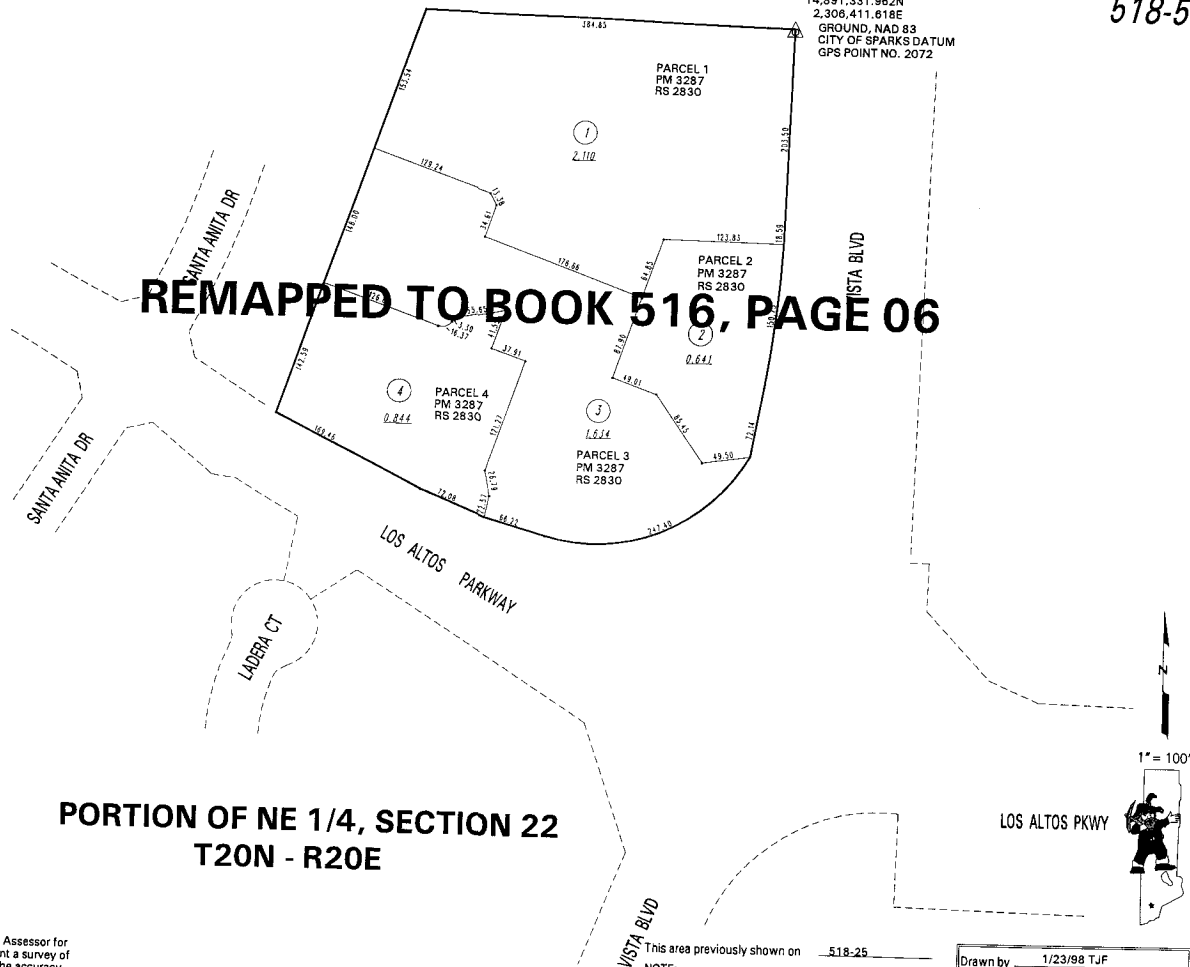


14,891,331.982N  
2,306,411.618E  
GROUND, NAD 83  
CITY OF SPARKS DATUM  
GPS POINT NO. 2072

**REMAPPED TO BOOK 516, PAGE 06**



**PORTION OF NE 1/4, SECTION 22  
T20N - R20E**

NOTE: This map is prepared for the use of the Washoe County Assessor for assessment and illustrative purposes only. It does not represent a survey of the premises. No liability is assumed as to the sufficiency or the accuracy of the data delineated hereon.

Office of Washoe County Assessor, Nevada - Robert W. McGowan

VISTA BLVD

This area previously shown on 518-25

NOTE:  
ASSESSOR'S BLOCK NUMBERS SHOWN IN ELLIPSES  
ASSESSOR'S PARCEL NUMBERS SHOWN IN CIRCLES

Drawn by	1/23/98 T.J.F.
Revised	CFB 12/22/99