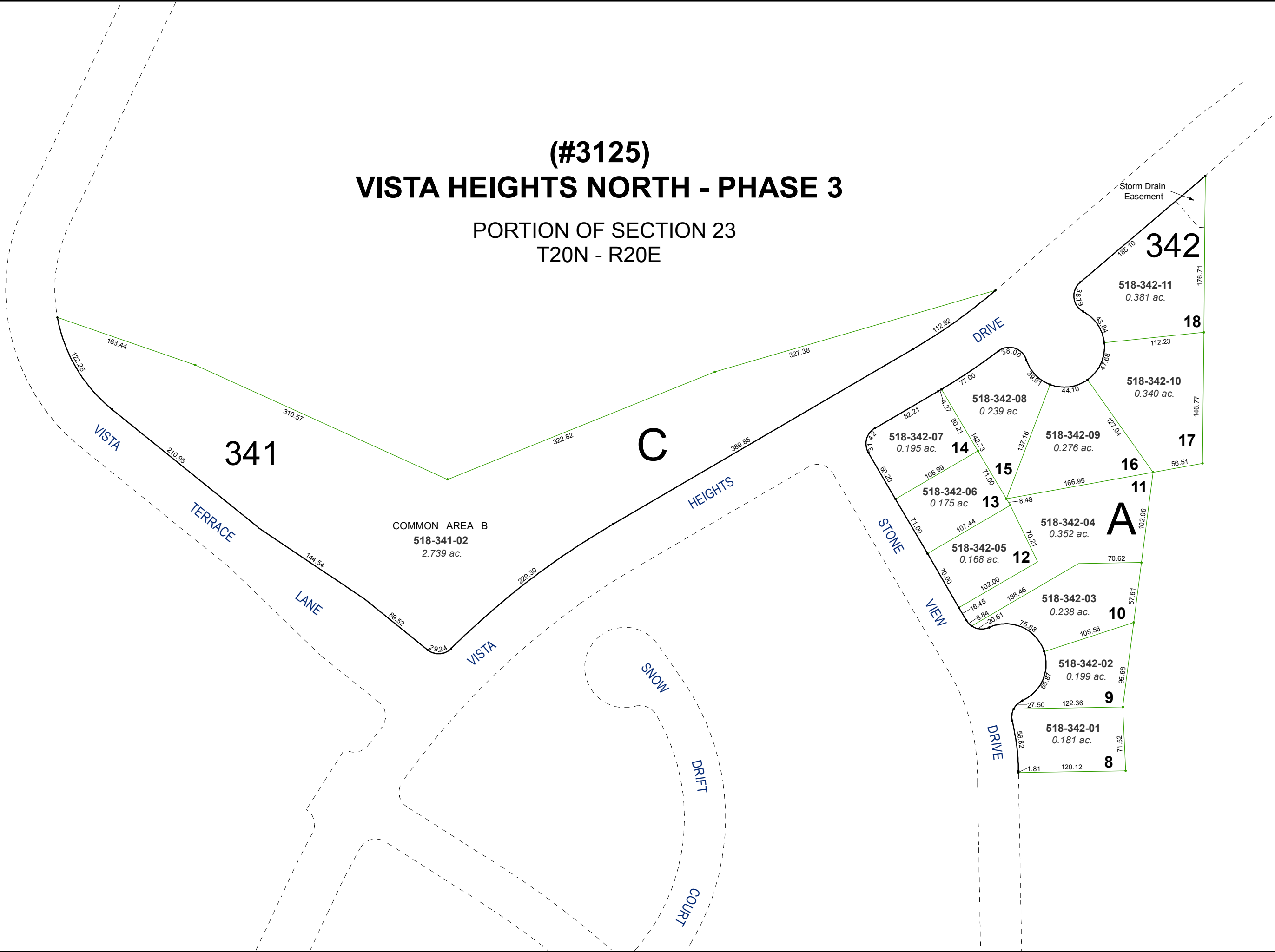


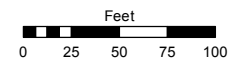
(#3125)
VISTA HEIGHTS NORTH - PHASE 3
 PORTION OF SECTION 23
 T20N - R20E



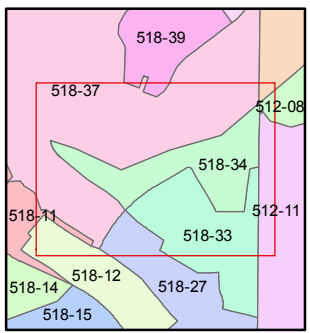
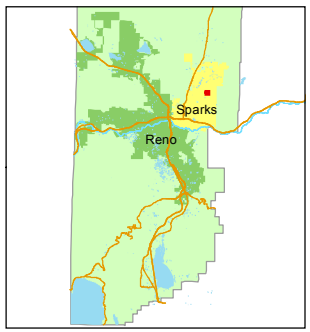
Assessor's Map Number
518-34

STATE OF NEVADA
WASHOE COUNTY
 ASSESSOR'S OFFICE
 Michael E. Clark, Assessor

1001 East Ninth Street
 Building D
 Reno, Nevada 89512
 (775) 328-2231



1 inch = 100 feet



created by: SR 4/28/2016

last updated: _____

area previously shown on map(s)
518-13

NOTE: This map was prepared for the use of the Washoe County Assessor for assessment and illustrative purposes only. It does not represent a survey of the premises. No liability is assumed as to the sufficiency or accuracy of the data delineated hereon.