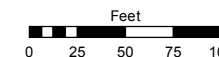
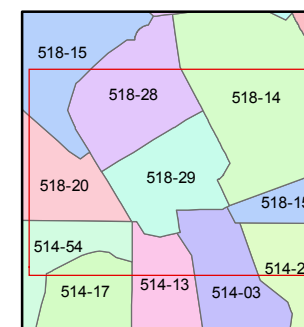
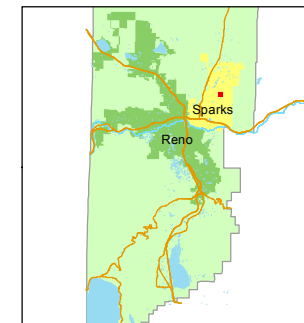


STATE OF NEVADA  
**WASHOE COUNTY**  
ASSESSOR'S OFFICE  
Michael E. Clark, Assessor

1001 East Ninth Street  
Building D  
Reno, Nevada 89512  
(775) 328-2231



1 inch = 100 feet



created by: SR 4/28/2016

last updated: \_\_\_\_\_

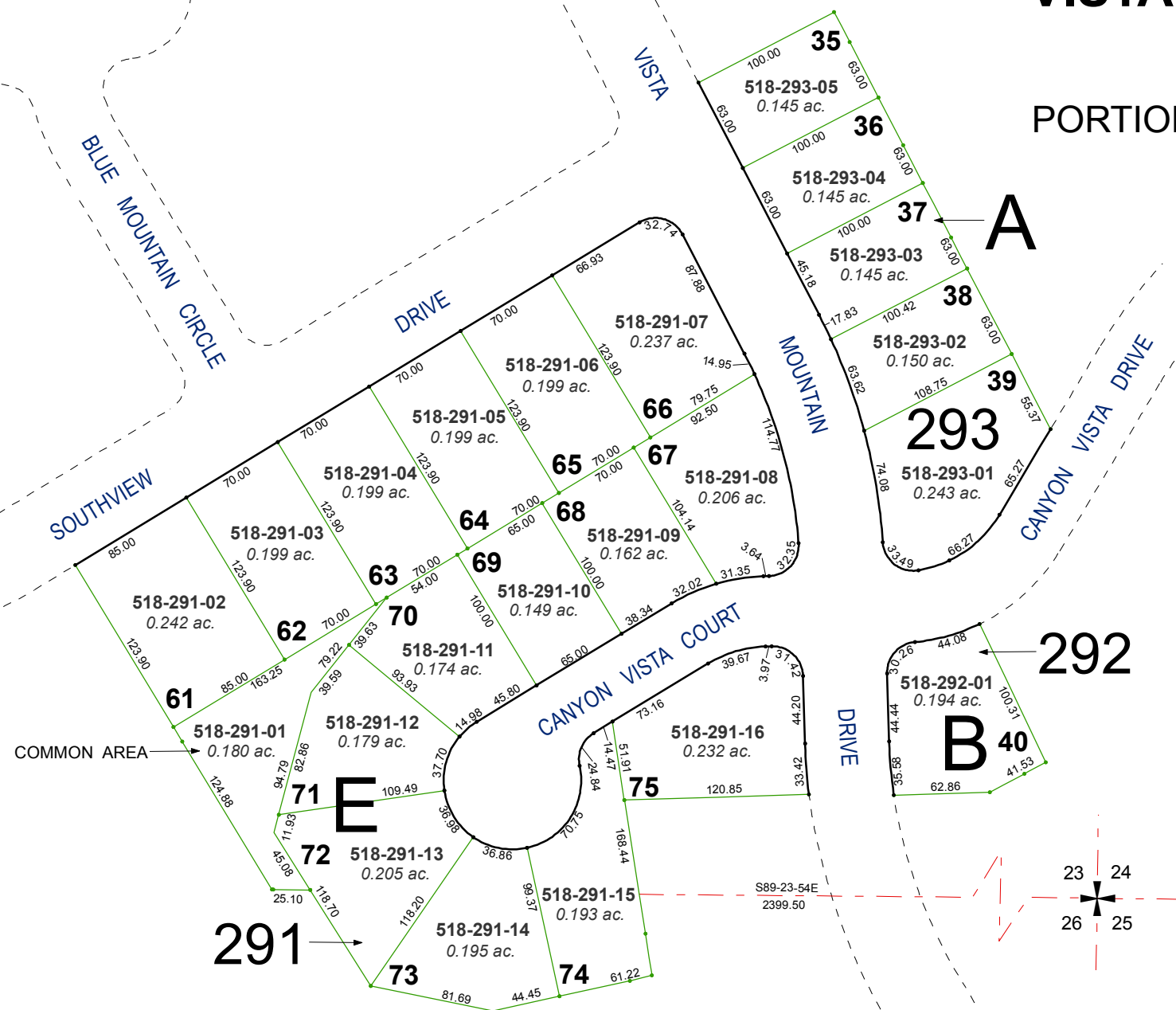
area previously shown on map(s)

518-13

NOTE: This map was prepared for the use of the Washoe County Assessor for assessment and illustrative purposes only. It does not represent a survey of the premises. No liability is assumed as to the sufficiency or accuracy of the data delineated hereon.

# (#3024) VISTA HEIGHTS SOUTH PHASE 2

## PORTION OF SECTIONS 23 & 26 T20N - R20E



**292**

**B 40**

23 24  
26 25

COMMON AREA