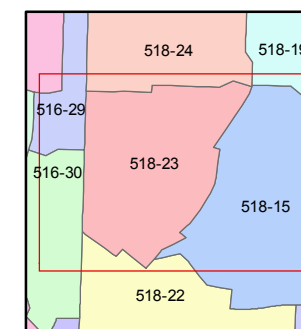
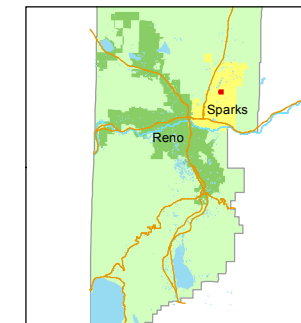


STATE OF NEVADA
WASHOE COUNTY
ASSESSOR'S OFFICE
Michael E. Clark, Assessor

1001 East Ninth Street
Building D
Reno, Nevada 89512
(775) 328-2231



1 inch = 100 feet



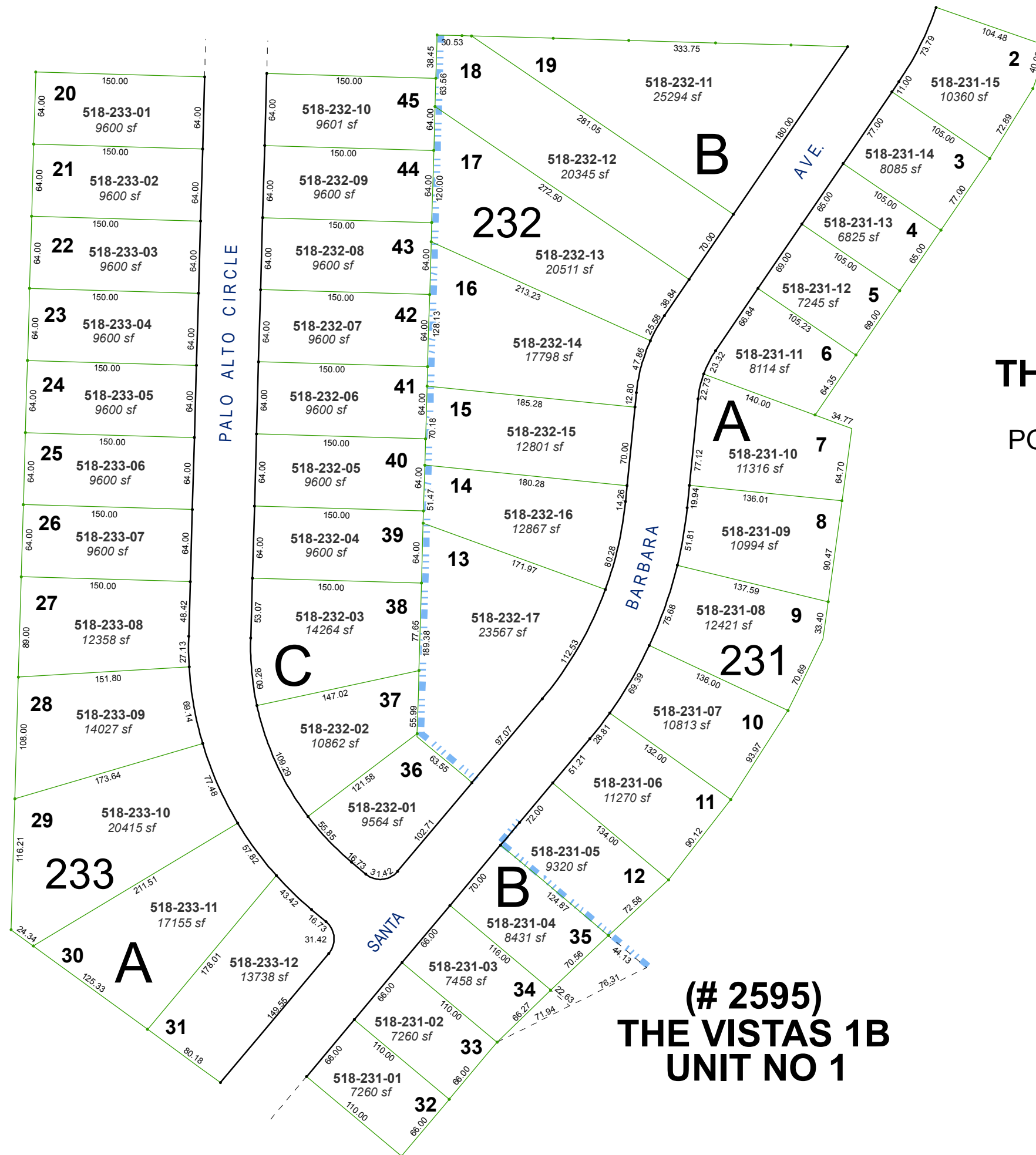
created by: CFB 05/04/2015

last updated:

area previously shown on map(s)

083-55

NOTE: This map was prepared for the use of the Washoe County Assessor for assessment and illustrative purposes only. It does not represent a survey of the premises. No liability is assumed as to the sufficiency or accuracy of the data delineated hereon.



(# 2693)
THE VISTAS 1B
UNIT NO 3
POR SW 1/4 SEC 23
T20N - R20E

(# 2595)
THE VISTAS 1B
UNIT NO 1