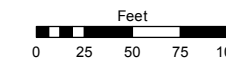
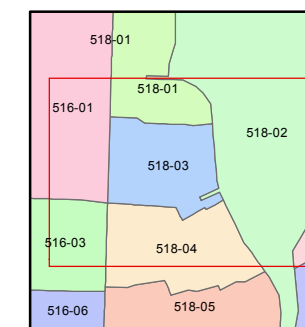
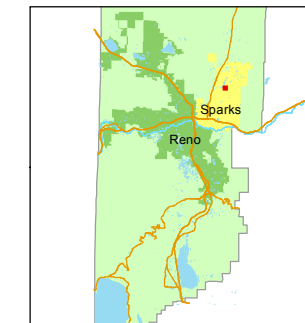


STATE OF NEVADA
WASHOE COUNTY
ASSESSOR'S OFFICE
Michael E. Clark, Assessor

1001 East Ninth Street
Building D
Reno, Nevada 89512
(775) 328-2231



1 inch = 100 feet



created by: SR 04/15/2016

last updated: _____

area previously shown on map(s)

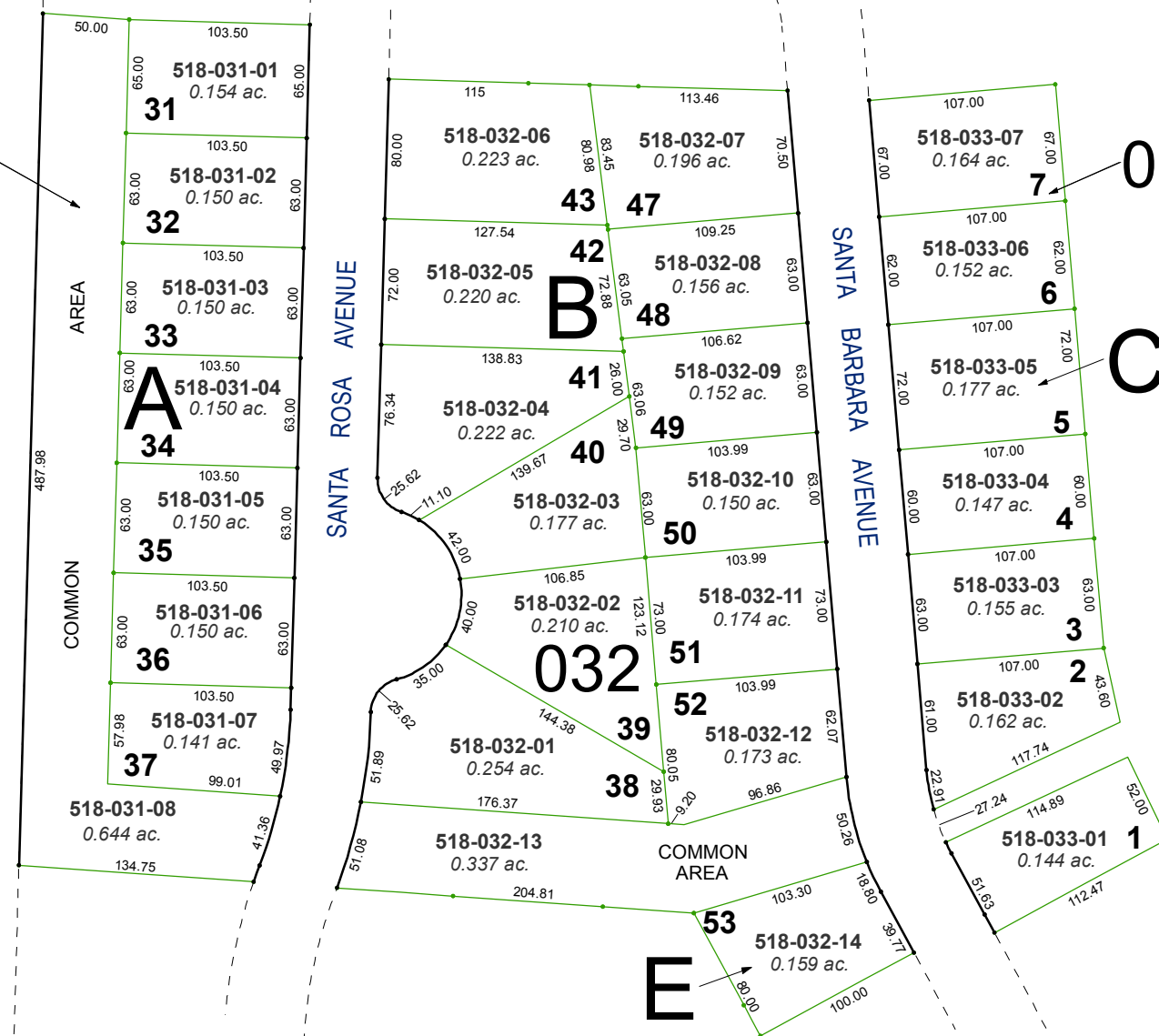
83-52

NOTE: This map was prepared for the use of the Washoe County Assessor for assessment and illustrative purposes only. It does not represent a survey of the premises. No liability is assumed as to the sufficiency or accuracy of the data delineated hereon.

(#2769)
THE VISTAS
UNIT NO.1A, PHASE 2
PORTION OF THE
NW 1/4 SECTION 23, T20N - R20E

031

VISTA BOULEVARD



033

C

E