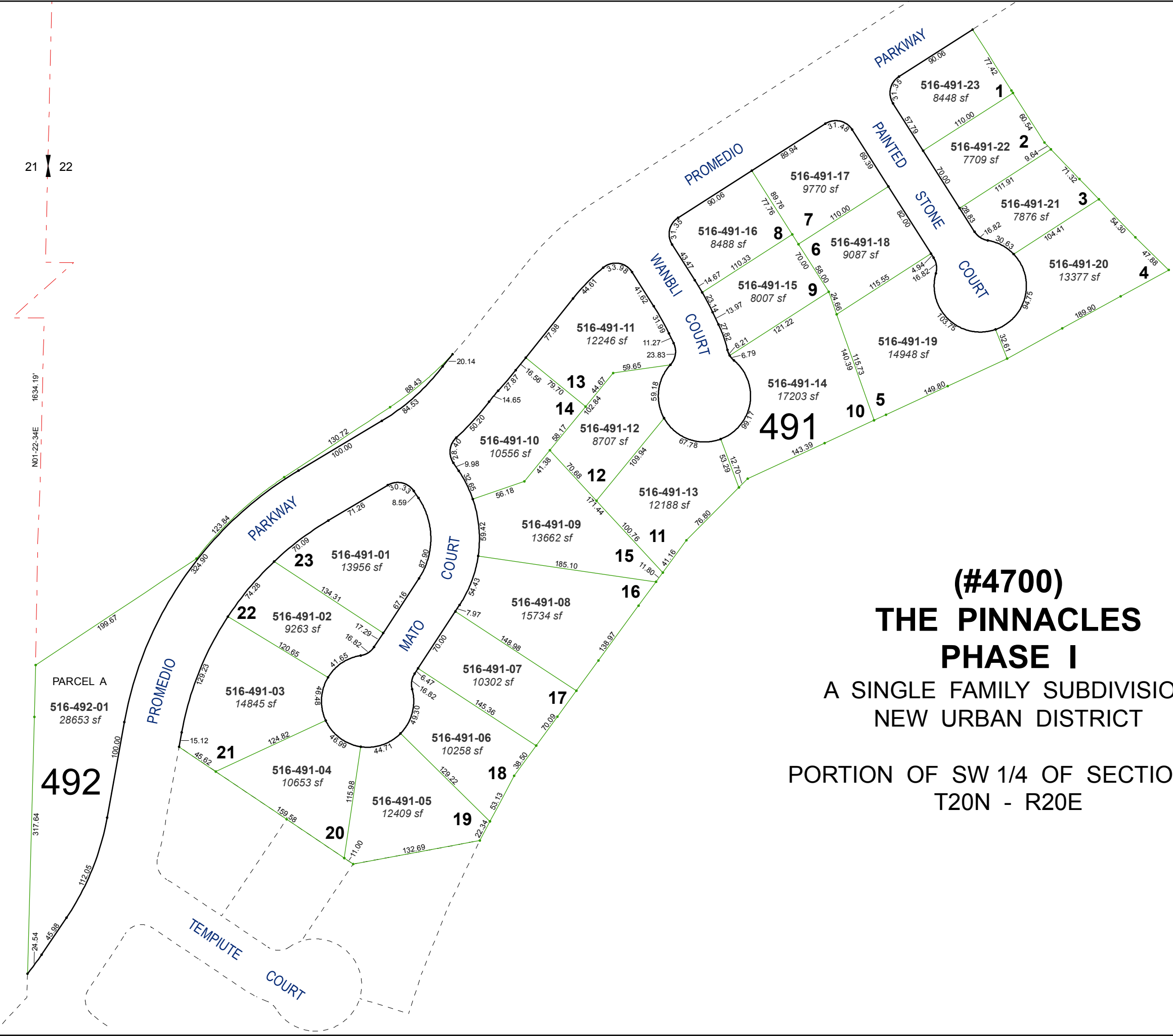


21 | 22

NO1-22-34E  
1634.19'

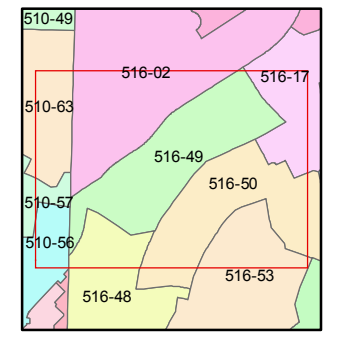
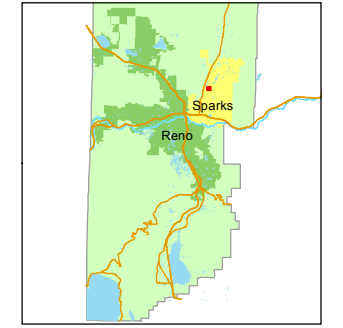
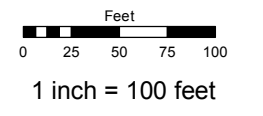


**(#4700)**  
**THE PINNACLES**  
**PHASE I**  
 A SINGLE FAMILY SUBDIVISION  
 NEW URBAN DISTRICT  
 PORTION OF SW 1/4 OF SECTION 22  
 T20N - R20E

Assessor's Map Number  
**516-49**

STATE OF NEVADA  
**WASHOE COUNTY**  
ASSESSOR'S OFFICE  
Michael E. Clark, Assessor

1001 East Ninth Street  
Building D  
Reno, Nevada 89512  
(775) 328-2231



created by: SR 06/15/2016

last updated: \_\_\_\_\_

area previously shown on map(s)  
516-02

NOTE: This map was prepared for the use of the Washoe County Assessor for assessment and illustrative purposes only. It does not represent a survey of the premises. No liability is assumed as to the sufficiency or accuracy of the data delineated hereon.