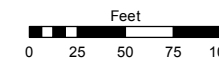
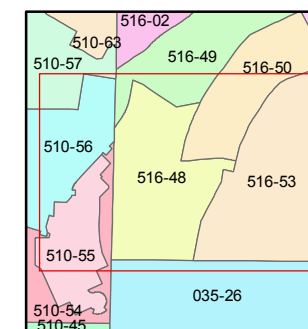
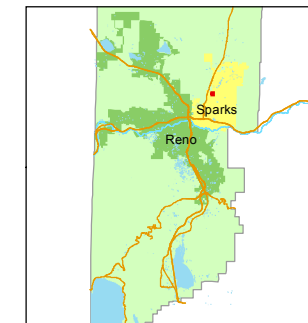


STATE OF NEVADA
WASHOE COUNTY
ASSESSOR'S OFFICE
Michael E. Clark, Assessor

1001 East Ninth Street
Building D
Reno, Nevada 89512
(775) 328-2231



1 inch = 100 feet



created by: SR 06/15/2016

last updated: _____

area previously shown on map(s)

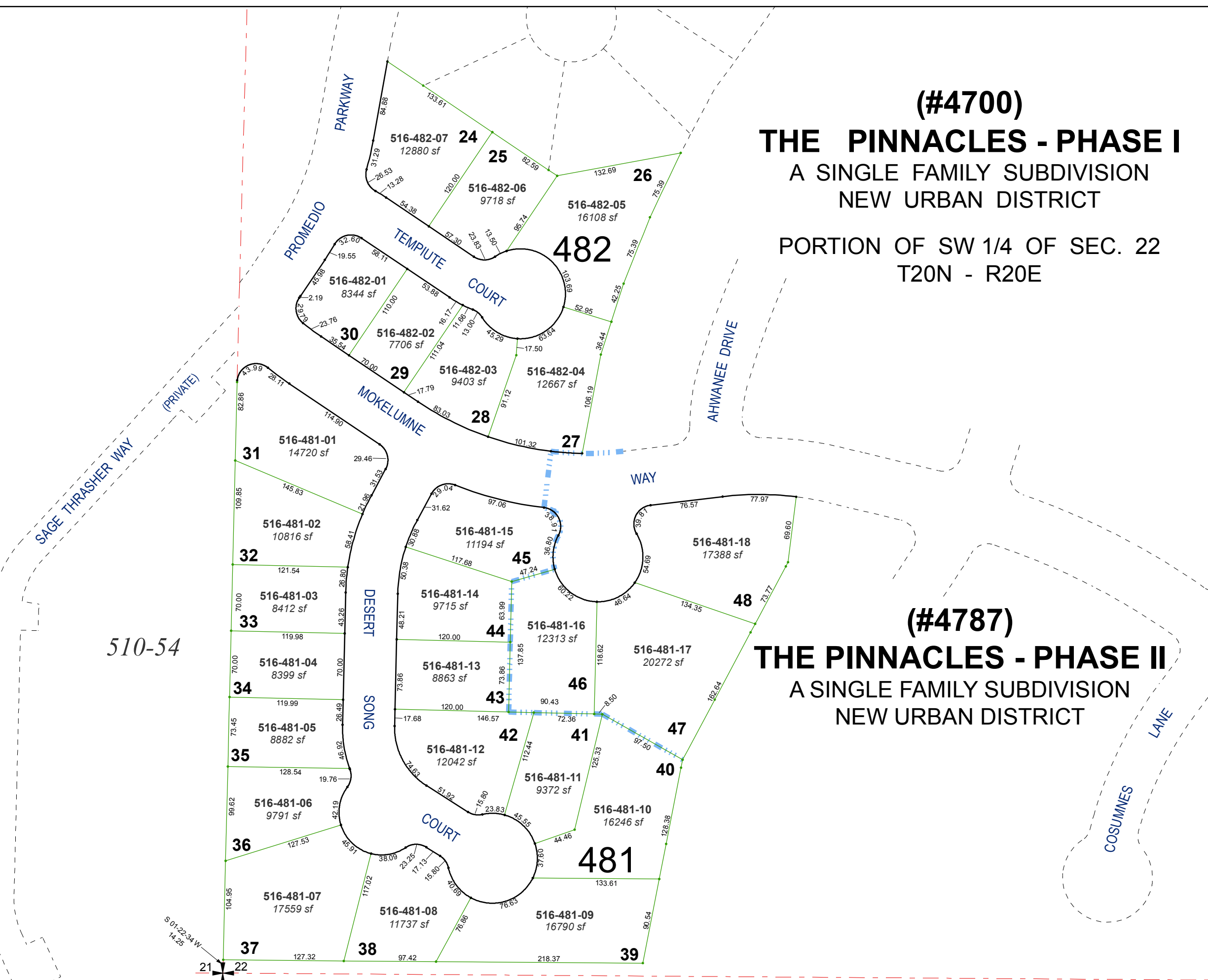
516-02

NOTE: This map was prepared for the use of the Washoe County Assessor for assessment and illustrative purposes only. It does not represent a survey of the premises. No liability is assumed as to the sufficiency or accuracy of the data delineated hereon.

(#4700)
THE PINNACLES - PHASE I
A SINGLE FAMILY SUBDIVISION
NEW URBAN DISTRICT

PORTION OF SW 1/4 OF SEC. 22
T20N - R20E

(#4787)
THE PINNACLES - PHASE II
A SINGLE FAMILY SUBDIVISION
NEW URBAN DISTRICT



510-54

S 01-22-34W
14-25