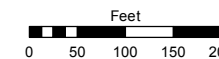


Assessor's Map Number

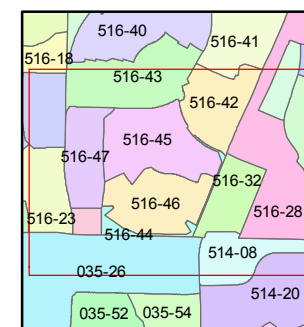
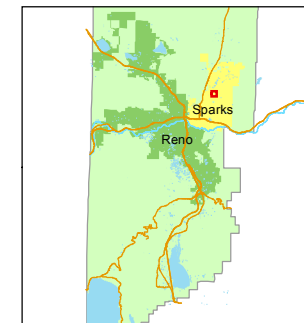
516-44

STATE OF NEVADA
WASHOE COUNTY
ASSESSOR'S OFFICE
Michael E. Clark, Assessor

1001 East Ninth Street
Building D
Reno, Nevada 89512
(775) 328-2231



1 inch = 200 feet



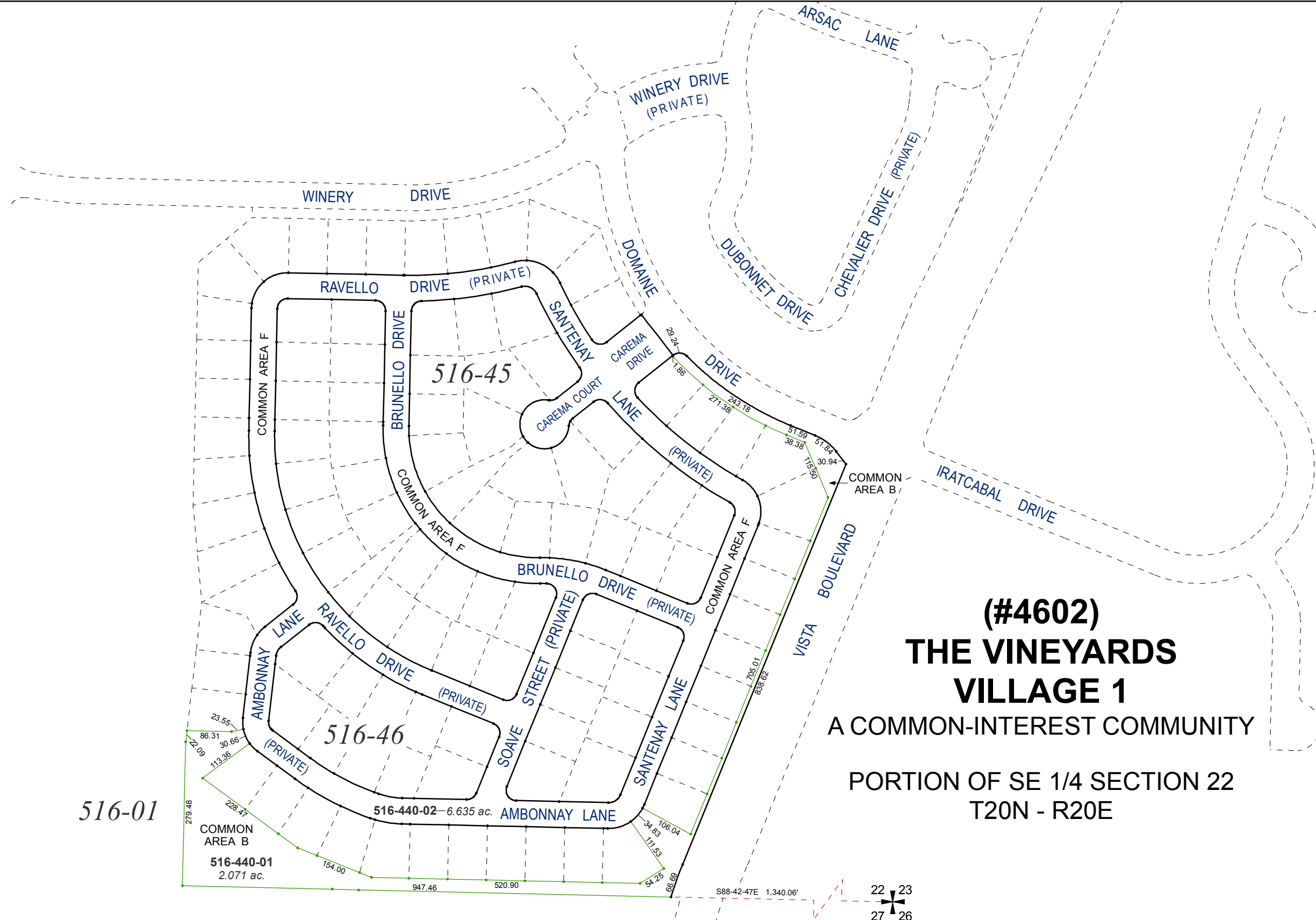
created by: SR 06/14/2016

last updated: _____

area previously shown on map(s)

516-01

NOTE: This map was prepared for the use of the Washoe County Assessor for assessment and illustrative purposes only. It does not represent a survey of the premises. No liability is assumed as to the sufficiency or accuracy of the data delineated herein.



(#4602)
THE VINEYARDS
VILLAGE 1
A COMMON-INTEREST COMMUNITY
PORTION OF SE 1/4 SECTION 22
T20N - R20E

516-01

