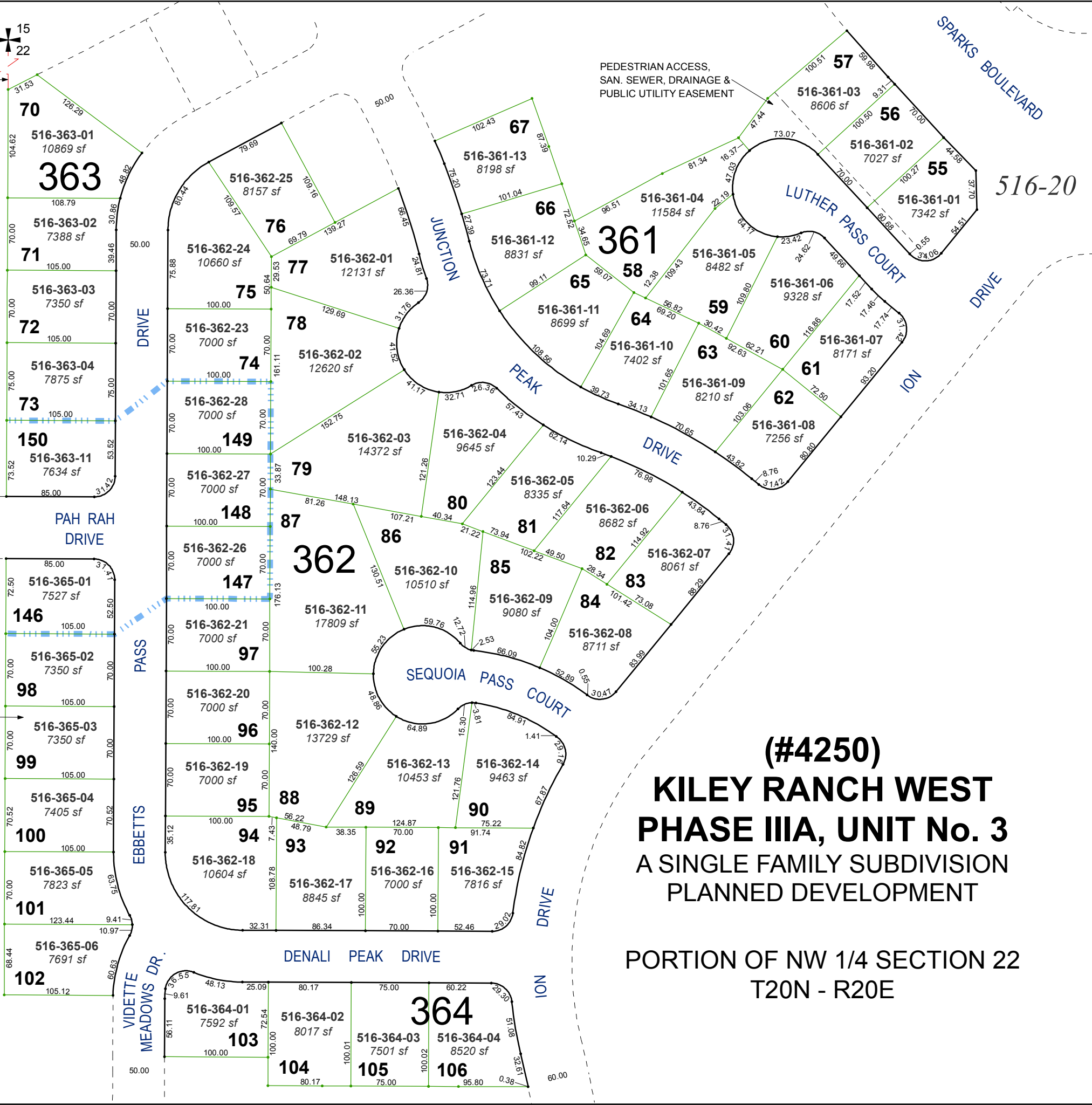


**(#4295)
KILEY RANCH WEST
PHASE IIIA
UNIT No. 7**



**(#4250)
KILEY RANCH WEST
PHASE IIIA, UNIT No. 3
A SINGLE FAMILY SUBDIVISION
PLANNED DEVELOPMENT**

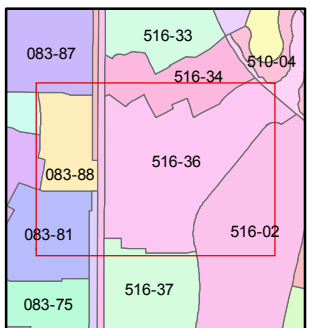
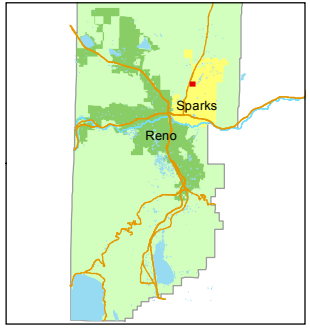
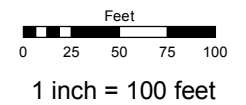
PORTION OF NW 1/4 SECTION 22
T20N - R20E

Assessor's Map Number

516-36

STATE OF NEVADA
WASHOE COUNTY
ASSESSOR'S OFFICE
Michael E. Clark, Assessor

1001 East Ninth Street
Building D
Reno, Nevada 89512
(775) 328-2231



created by: SR 06/13/2016

last updated: _____

area previously shown on map(s)
516-02

NOTE: This map was prepared for the use of the Washoe County Assessor for assessment and illustrative purposes only. It does not represent a survey of the premises. No liability is assumed as to the sufficiency or accuracy of the data delineated hereon.