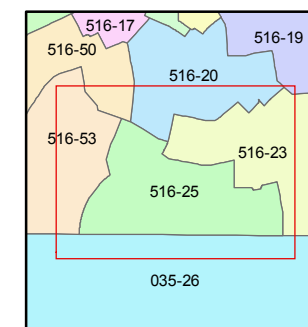
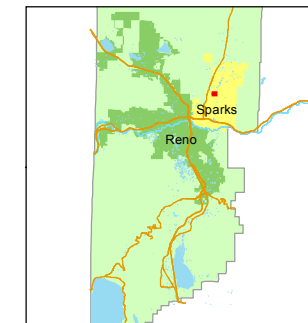


STATE OF NEVADA  
**WASHOE COUNTY**  
ASSESSOR'S OFFICE  
Michael E. Clark, Assessor

1001 East Ninth Street  
Building D  
Reno, Nevada 89512  
(775) 328-2231



1 inch = 100 feet



created by: SR 06/08/2016

last updated: \_\_\_\_\_

area previously shown on map(s)

516-02

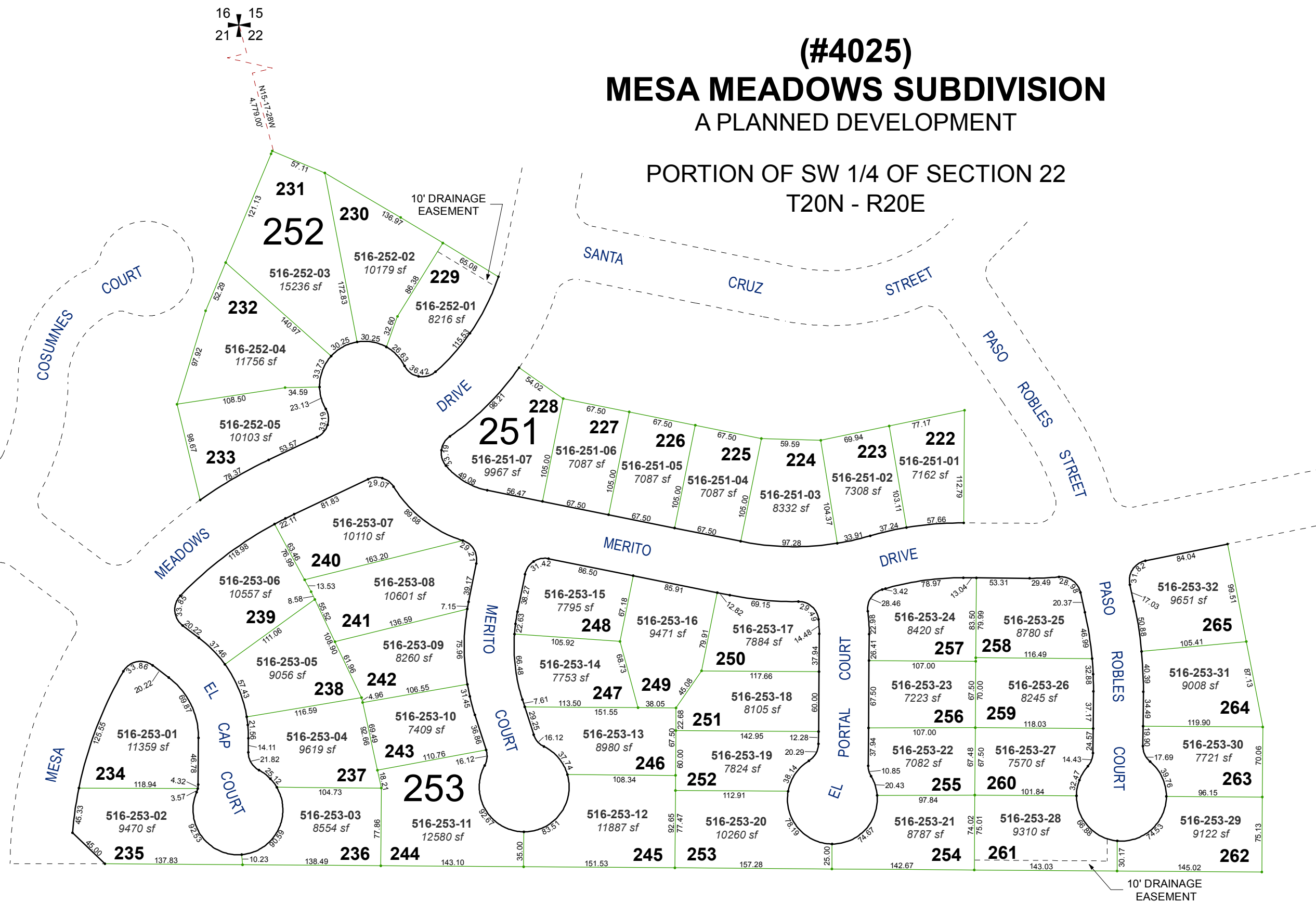
NOTE: This map was prepared for the use of the Washoe County Assessor for assessment and illustrative purposes only. It does not represent a survey of the premises. No liability is assumed as to the sufficiency or accuracy of the data delineated hereon.

**(#4025)**

# MESA MEADOWS SUBDIVISION

A PLANNED DEVELOPMENT

PORTION OF SW 1/4 OF SECTION 22  
T20N - R20E



10' DRAINAGE EASEMENT