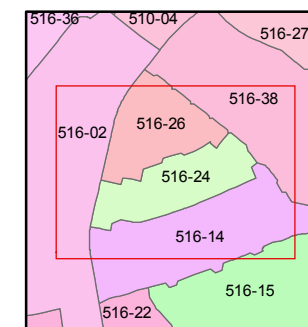
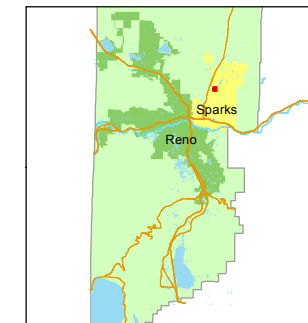


1 inch = 100 feet



created by: SR 06/08/2016

last updated:

area previously shown on map(s)

516-02

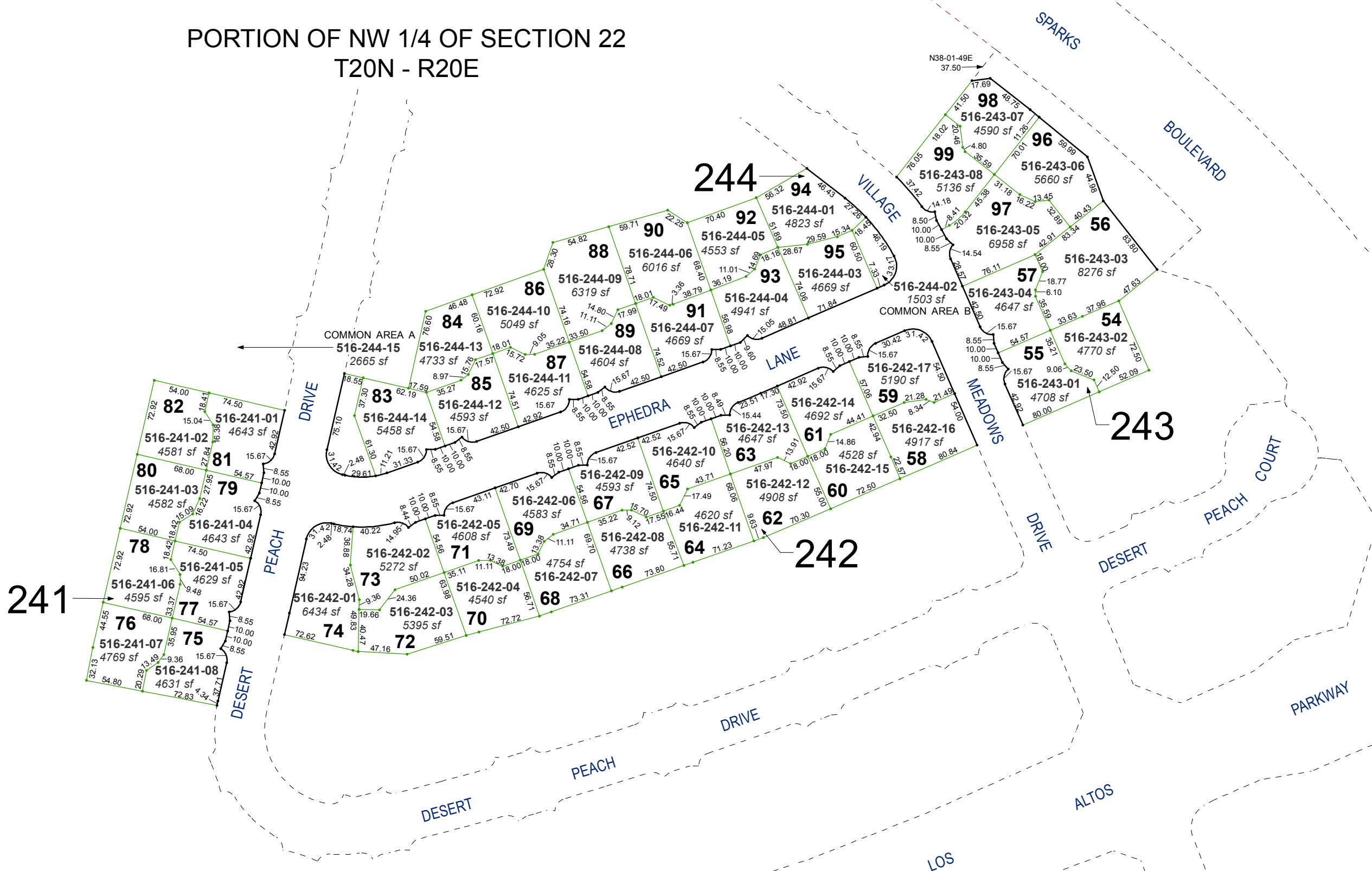
NOTE: This map was prepared for the use of the Washoe County Assessor for assessment and illustrative purposes only. It does not represent a survey of the premises. No liability is assumed as to the sufficiency or accuracy of the data delineated hereon.

(#3943)

KILEY RANCH PHASE II, UNIT 8

A SINGLE FAMILY SUBDIVISION PLANNED DEVELOPMENT

PORTION OF NW 1/4 OF SECTION 22
T20N - R20E



241

244

242

243

PARKWAY

LOS

ALTOS

DESERT

PEACH

DRIVE

DRIVE

COURT

DESERT

MEADOWS

LANE

EPHEDRA

VILLAGE

SPARKS

BOULEVARD

DRIVE

PEACH

DESERT

DRIVE

PEACH

DESERT

COMMON AREA A

COMMON AREA B

80 516-241-03 4582 sf
81 516-241-04 4643 sf
79 516-241-05 4629 sf
78 516-241-06 4595 sf
77 516-241-07 4769 sf
76 516-241-08 4631 sf
82 516-241-01 4643 sf
83 516-241-02 4581 sf
84 516-241-03 4582 sf
85 516-241-04 4643 sf
86 516-241-05 4629 sf
87 516-241-06 4595 sf
88 516-241-07 4769 sf
89 516-241-08 4631 sf

83 516-244-14 4593 sf
84 516-244-15 2665 sf
85 516-244-16 4625 sf
86 516-244-17 4608 sf
87 516-244-18 4738 sf
88 516-244-19 4754 sf
89 516-244-20 4738 sf
90 516-244-21 4738 sf
91 516-244-22 4738 sf
92 516-244-23 4738 sf
93 516-244-24 4738 sf
94 516-244-25 4738 sf
95 516-244-26 4738 sf
96 516-244-27 4738 sf
97 516-244-28 4738 sf
98 516-244-29 4738 sf
99 516-244-30 4738 sf

63 516-242-10 4640 sf
64 516-242-11 4738 sf
65 516-242-12 4908 sf
66 516-242-13 4528 sf
67 516-242-14 4692 sf
68 516-242-15 4917 sf
69 516-242-16 4917 sf
70 516-242-17 5190 sf
71 516-242-18 4647 sf
72 516-242-19 4647 sf
73 516-242-20 4647 sf
74 516-242-21 4647 sf
75 516-242-22 4647 sf
76 516-242-23 4647 sf
77 516-242-24 4647 sf
78 516-242-25 4647 sf
79 516-242-26 4647 sf
80 516-242-27 4647 sf
81 516-242-28 4647 sf
82 516-242-29 4647 sf
83 516-242-30 4647 sf

54 516-243-03 8276 sf
55 516-243-04 4647 sf
56 516-243-05 6958 sf
57 516-243-06 5660 sf
58 516-243-07 4590 sf
59 516-243-08 5136 sf
60 516-243-09 4590 sf
61 516-243-10 5136 sf
62 516-243-11 4590 sf
63 516-243-12 5136 sf
64 516-243-13 4590 sf
65 516-243-14 5136 sf
66 516-243-15 4590 sf
67 516-243-16 5136 sf
68 516-243-17 4590 sf
69 516-243-18 5136 sf
70 516-243-19 4590 sf
71 516-243-20 5136 sf
72 516-243-21 4590 sf
73 516-243-22 5136 sf
74 516-243-23 4590 sf
75 516-243-24 5136 sf
76 516-243-25 4590 sf
77 516-243-26 5136 sf
78 516-243-27 4590 sf
79 516-243-28 5136 sf
80 516-243-29 4590 sf
81 516-243-30 5136 sf

92 516-244-01 4823 sf
93 516-244-02 4669 sf
94 516-244-03 4669 sf
95 516-244-04 4941 sf
96 516-244-05 4553 sf
97 516-244-06 6016 sf
98 516-244-07 4553 sf
99 516-244-08 6319 sf
100 516-244-09 6016 sf
101 516-244-10 4941 sf
102 516-244-11 4669 sf
103 516-244-12 4669 sf
104 516-244-13 4941 sf
105 516-244-14 4553 sf
106 516-244-15 6016 sf
107 516-244-16 4553 sf
108 516-244-17 6319 sf
109 516-244-18 6016 sf
110 516-244-19 4553 sf
111 516-244-20 6016 sf
112 516-244-21 4553 sf
113 516-244-22 6319 sf
114 516-244-23 6016 sf
115 516-244-24 4553 sf
116 516-244-25 6016 sf
117 516-244-26 4553 sf
118 516-244-27 6319 sf
119 516-244-28 6016 sf
120 516-244-29 4553 sf
121 516-244-30 6016 sf

516-243-01 4708 sf
516-243-02 4770 sf
516-243-03 8276 sf
516-243-04 4647 sf
516-243-05 6958 sf
516-243-06 5660 sf
516-243-07 4590 sf
516-243-08 5136 sf
516-243-09 4590 sf
516-243-10 5136 sf
516-243-11 4590 sf
516-243-12 5136 sf
516-243-13 4590 sf
516-243-14 5136 sf
516-243-15 4590 sf
516-243-16 5136 sf
516-243-17 4590 sf
516-243-18 5136 sf
516-243-19 4590 sf
516-243-20 5136 sf
516-243-21 4590 sf
516-243-22 5136 sf
516-243-23 4590 sf
516-243-24 5136 sf
516-243-25 4590 sf
516-243-26 5136 sf
516-243-27 4590 sf
516-243-28 5136 sf
516-243-29 4590 sf
516-243-30 5136 sf

516-242-01 6434 sf
516-242-02 5272 sf
516-242-03 5395 sf
516-242-04 4540 sf
516-242-05 4608 sf
516-242-06 4583 sf
516-242-07 4754 sf
516-242-08 4738 sf
516-242-09 4593 sf
516-242-10 4640 sf
516-242-11 4738 sf
516-242-12 4908 sf
516-242-13 4647 sf
516-242-14 4692 sf
516-242-15 4917 sf
516-242-16 4917 sf
516-242-17 5190 sf
516-242-18 4647 sf
516-242-19 4647 sf
516-242-20 4647 sf
516-242-21 4647 sf
516-242-22 4647 sf
516-242-23 4647 sf
516-242-24 4647 sf
516-242-25 4647 sf
516-242-26 4647 sf
516-242-27 4647 sf
516-242-28 4647 sf
516-242-29 4647 sf
516-242-30 4647 sf

516-241-01 4643 sf
516-241-02 4581 sf
516-241-03 4582 sf
516-241-04 4643 sf
516-241-05 4629 sf
516-241-06 4595 sf
516-241-07 4769 sf
516-241-08 4631 sf
516-241-09 4643 sf
516-241-10 4581 sf
516-241-11 4582 sf
516-241-12 4643 sf
516-241-13 4629 sf
516-241-14 4595 sf
516-241-15 4769 sf
516-241-16 4631 sf
516-241-17 4643 sf
516-241-18 4581 sf
516-241-19 4582 sf
516-241-20 4643 sf
516-241-21 4629 sf
516-241-22 4595 sf
516-241-23 4769 sf
516-241-24 4631 sf
516-241-25 4643 sf
516-241-26 4581 sf
516-241-27 4582 sf
516-241-28 4643 sf
516-241-29 4629 sf
516-241-30 4595 sf