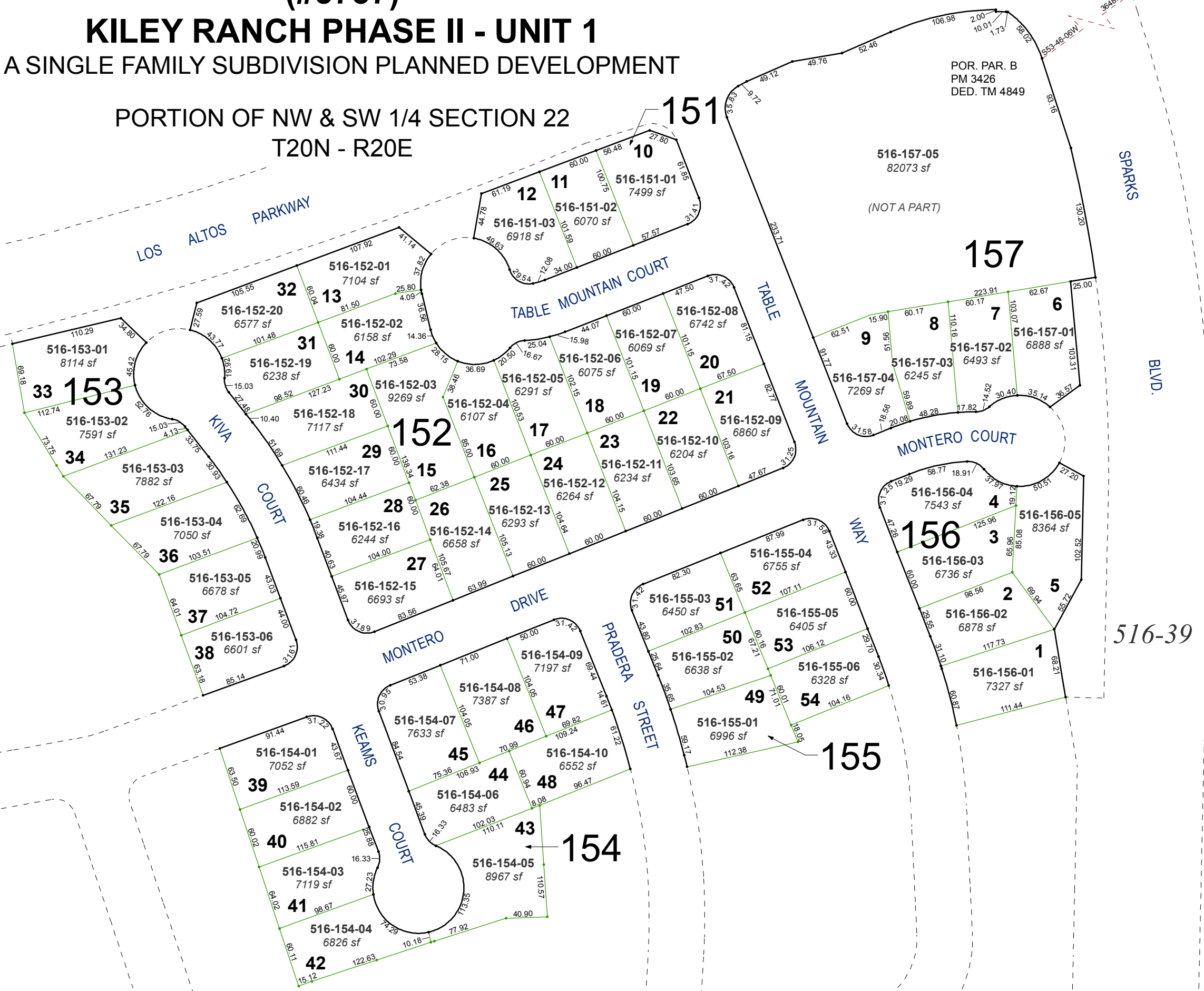


**(#3737)**  
**KILEY RANCH PHASE II - UNIT 1**  
 A SINGLE FAMILY SUBDIVISION PLANNED DEVELOPMENT

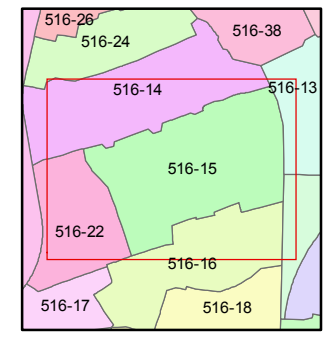
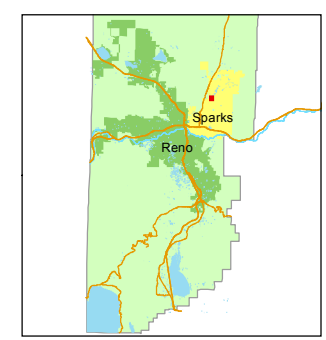
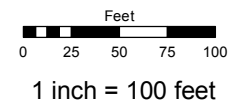
PORTION OF NW & SW 1/4 SECTION 22  
 T20N - R20E



Assessor's Map Number  
**516-15**

STATE OF NEVADA  
**WASHOE COUNTY**  
 ASSESSOR'S OFFICE  
 Michael E. Clark, Assessor

1001 East Ninth Street  
 Building D  
 Reno, Nevada 89512  
 (775) 328-2231



created by: SR 06/01/2016  
 last updated: \_\_\_\_\_

area previously shown on map(s)  
518-42, 518-66, 516-02

NOTE: This map was prepared for the use of the Washoe County Assessor for assessment and illustrative purposes only. It does not represent a survey of the premises. No liability is assumed as to the sufficiency or accuracy of the data delineated hereon.