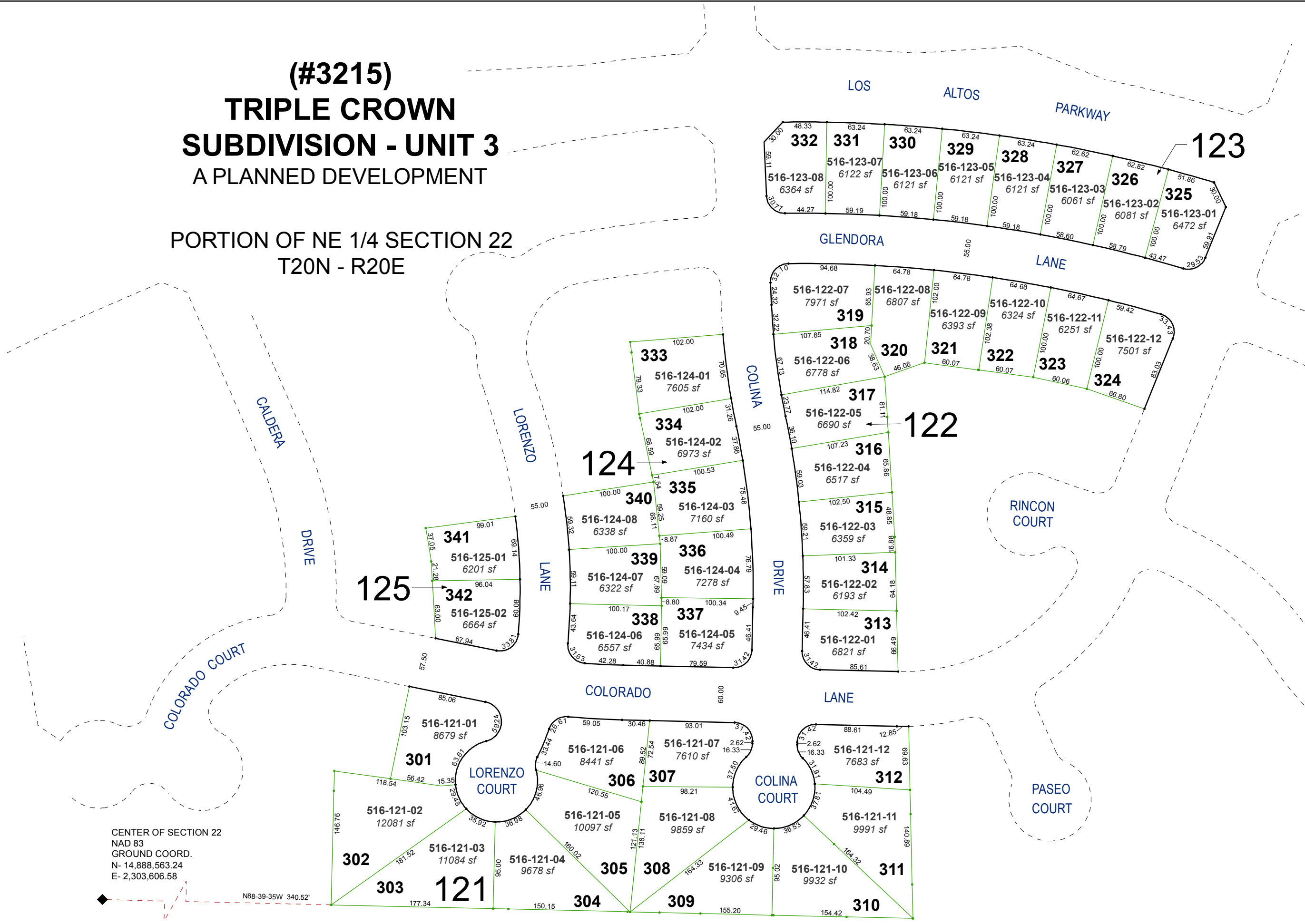


(#3215)
TRIPLE CROWN
SUBDIVISION - UNIT 3
 A PLANNED DEVELOPMENT

PORTION OF NE 1/4 SECTION 22
 T20N - R20E



CENTER OF SECTION 22
 NAD 83
 GROUND COORD.
 N- 14,888,563.24
 E- 2,303,606.58

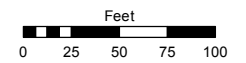
N88-39-35W 340.52'

Assessor's Map Number

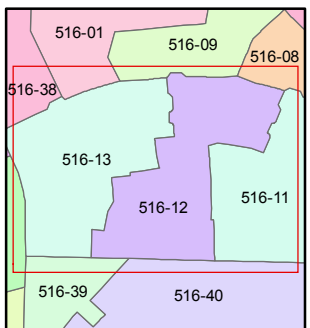
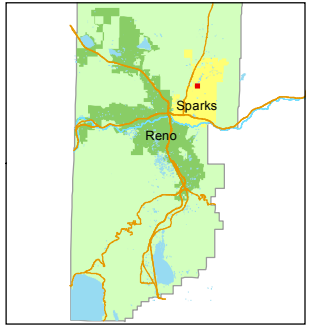
516-12

STATE OF NEVADA
WASHOE COUNTY
 ASSESSOR'S OFFICE
 Michael E. Clark, Assessor

1001 East Ninth Street
 Building D
 Reno, Nevada 89512
 (775) 328-2231



1 inch = 100 feet



created by: SR 05/31/2016

last updated: _____

area previously shown on map(s)
518-40

NOTE: This map was prepared for the use of the Washoe County Assessor for assessment and illustrative purposes only. It does not represent a survey of the premises. No liability is assumed as to the sufficiency or accuracy of the data delineated hereon.