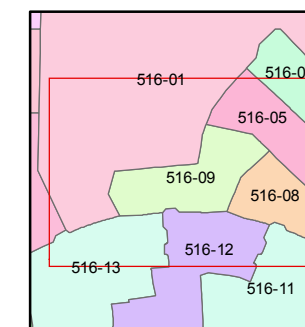
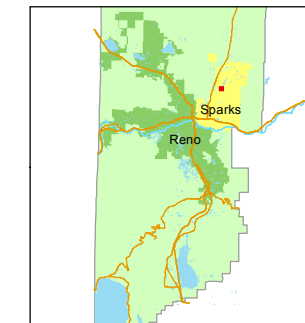


STATE OF NEVADA
WASHOE COUNTY
ASSESSOR'S OFFICE
Michael E. Clark, Assessor

1001 East Ninth Street
Building D
Reno, Nevada 89512
(775) 328-2231



1 inch = 100 feet



created by: SR 05/27/2016

last updated: _____

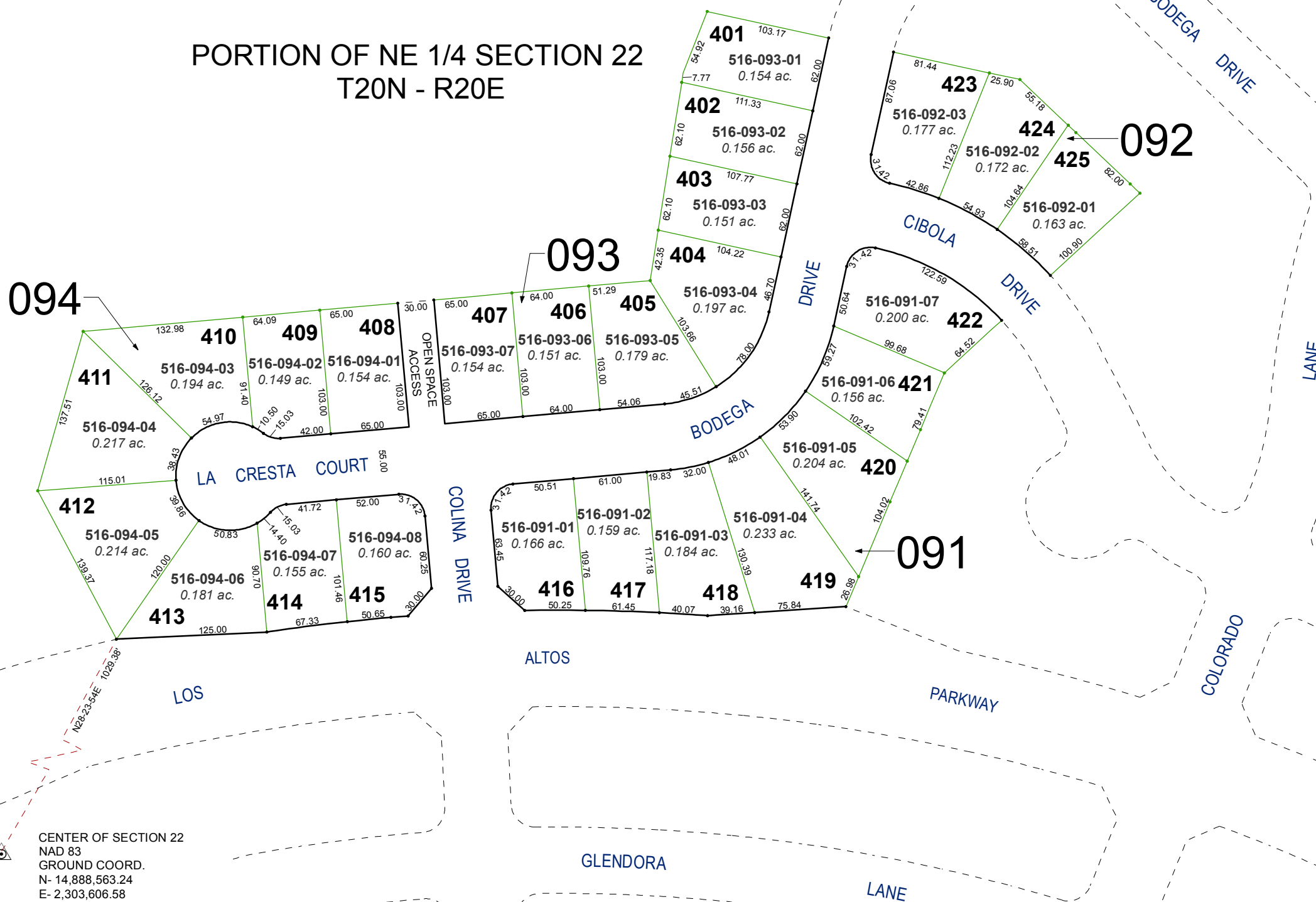
area previously shown on map(s)

518-41

NOTE: This map was prepared for the use of the Washoe County Assessor for assessment and illustrative purposes only. It does not represent a survey of the premises. No liability is assumed as to the sufficiency or accuracy of the data delineated hereon.

(#3241)
TRIPLE CROWN SUBDIVISION - UNIT 4
A PLANNED DEVELOPMENT

PORTION OF NE 1/4 SECTION 22
T20N - R20E



CENTER OF SECTION 22
NAD 83
GROUND COORD.
N- 14,888,563.24
E- 2,303,606.58