

Assessor's Map Number

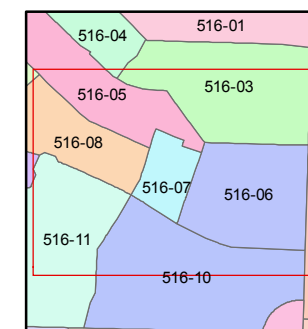
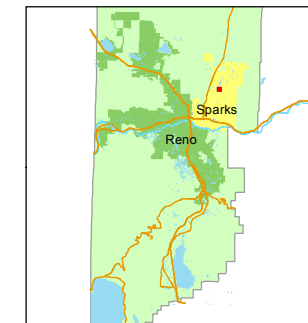
516-07

STATE OF NEVADA
WASHOE COUNTY
ASSESSOR'S OFFICE
Michael E. Clark, Assessor

1001 East Ninth Street
Building D
Reno, Nevada 89512
(775) 328-2231



1 inch = 100 feet



created by: SR 05/26/2016

last updated: _____

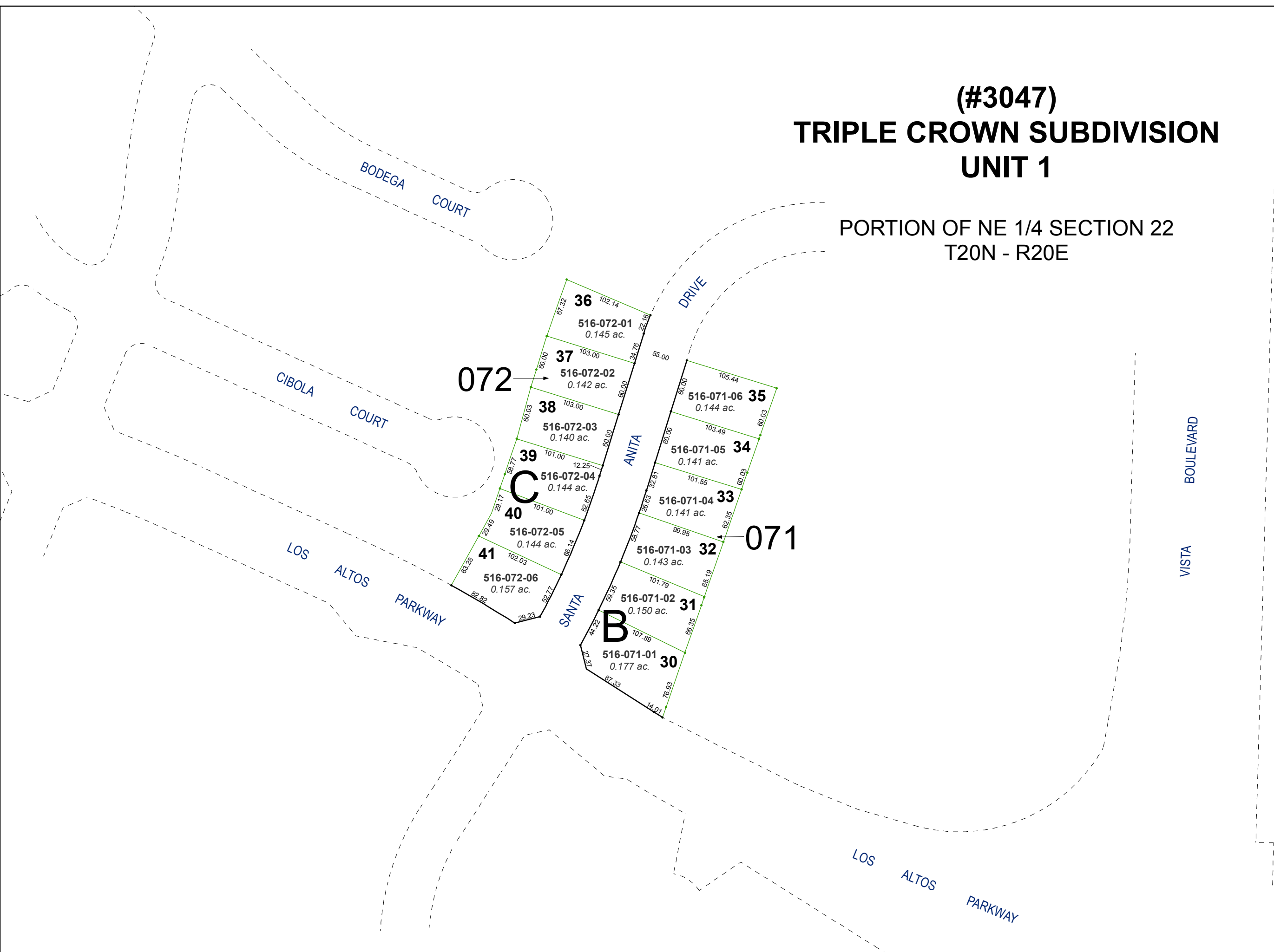
area previously shown on map(s)

518-32

NOTE: This map was prepared for the use of the Washoe County Assessor for assessment and illustrative purposes only. It does not represent a survey of the premises. No liability is assumed as to the sufficiency or accuracy of the data delineated hereon.

(#3047) TRIPLE CROWN SUBDIVISION UNIT 1

PORTION OF NE 1/4 SECTION 22
T20N - R20E



072

071

C

B

36	516-072-01	0.145 ac.
37	516-072-02	0.142 ac.
38	516-072-03	0.140 ac.
39	516-072-04	0.144 ac.
40	516-072-05	0.144 ac.
41	516-072-06	0.157 ac.
35	516-071-06	0.144 ac.
34	516-071-05	0.141 ac.
33	516-071-04	0.141 ac.
32	516-071-03	0.143 ac.
31	516-071-02	0.150 ac.
30	516-071-01	0.177 ac.