

BOOK 510

516-35

516-27

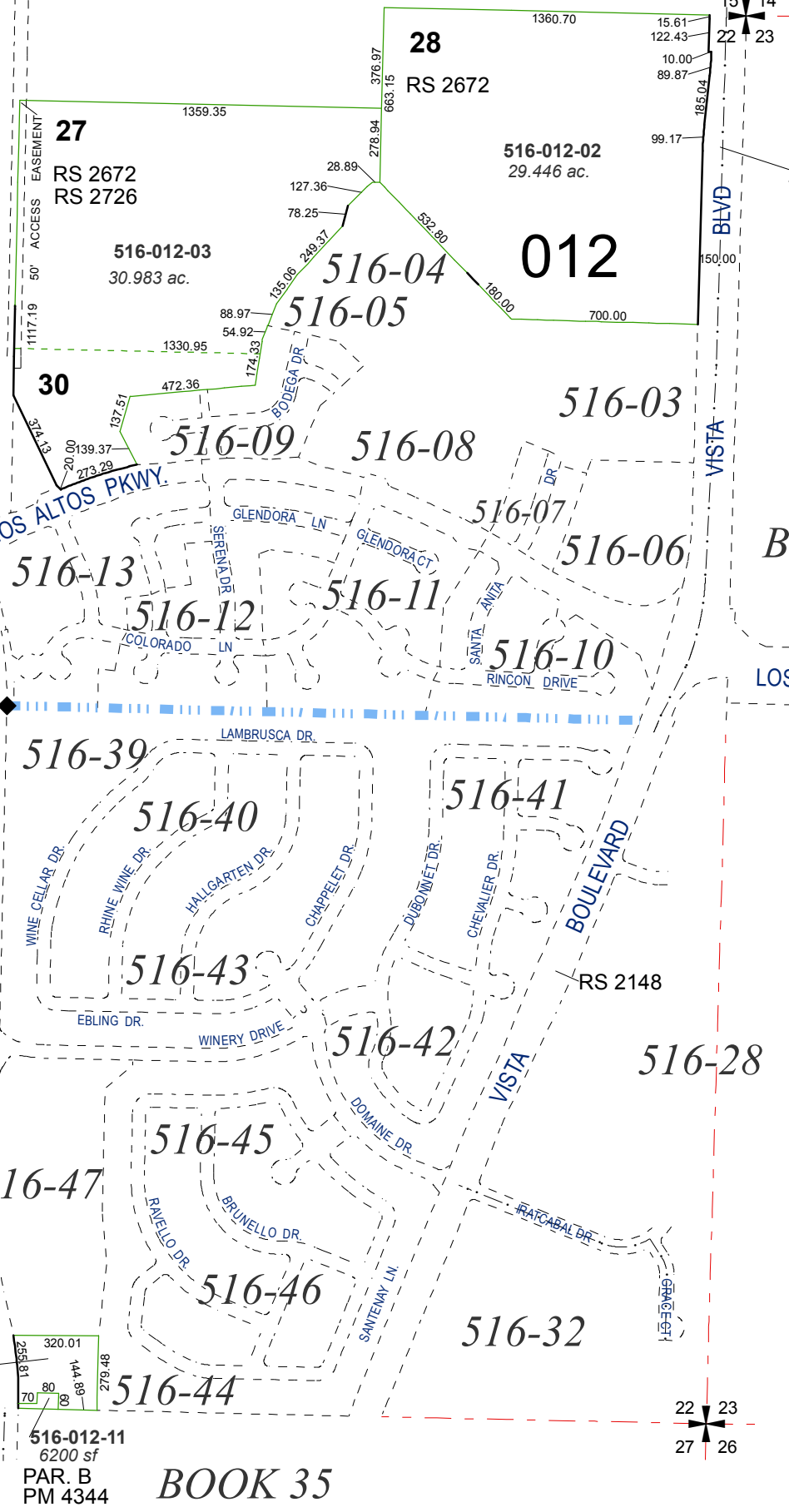
516-38

516-16

516-18

516-19

516-23



VISTA BLVD STREET DEDICATION PER TRACT MAP #3196

**MAP OF DIVISION INTO LARGE PARCELS #38**  
POR. E 1/2 SEC. 22, T20N - R20E

BOOK 518

**(#4453)  
THE VINEYARDS VILLAGES 2 & 3**

516-012-13  
77659 sf  
PAR. D  
PM 4473

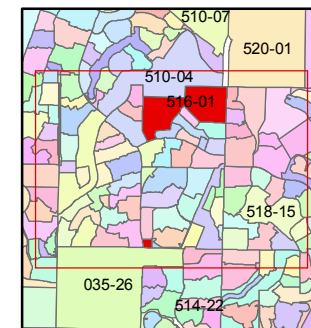
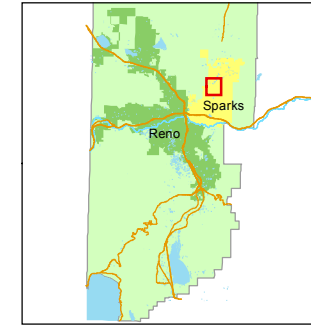
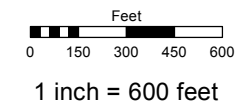
516-012-11  
6200 sf  
PAR. B  
PM 4344

BOOK 35

Assessor's Map Number  
**516-01**

STATE OF NEVADA  
**WASHOE COUNTY**  
ASSESSOR'S OFFICE  
Joshua G. Wilson, Assessor

1001 East Ninth Street  
Building D  
Reno, Nevada 89512  
(775) 328-2231



created by: CFB 10/11/2012  
last updated: \_\_\_\_\_  
area previously shown on map(s) \_\_\_\_\_

NOTE: This map was prepared for the use of the Washoe County Assessor for assessment and illustrative purposes only. It does not represent a survey of the premises. No liability is assumed as to the sufficiency or accuracy of the data delineated hereon.