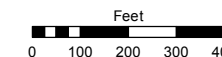
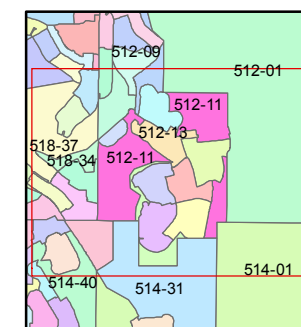
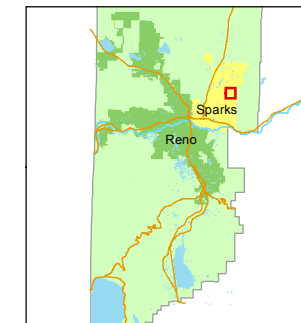


STATE OF NEVADA
WASHOE COUNTY
ASSESSOR'S OFFICE
Michael E. Clark, Assessor

1001 East Ninth Street
Building D
Reno, Nevada 89512
(775) 328-2231



1 inch = 400 feet



created by: KSB 5/11/2009

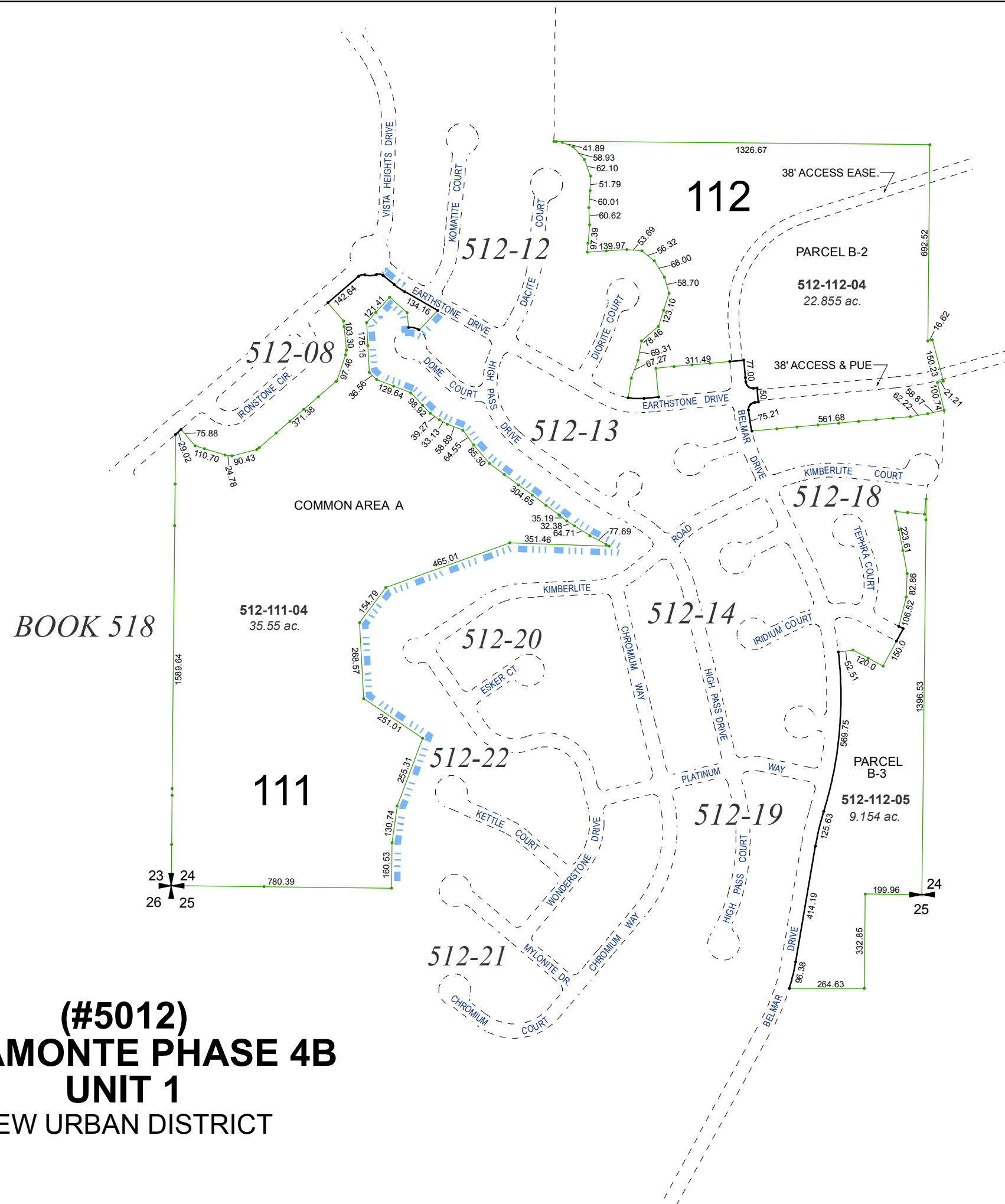
last updated: KSB 5/21/12 KSB 9/18/15

area previously shown on map(s)

512-01, 05 & 514-01

NOTE: This map was prepared for the use of the Washoe County Assessor for assessment and illustrative purposes only. It does not represent a survey of the premises. No liability is assumed as to the sufficiency or accuracy of the data delineated hereon.

(#4915)
MIRAMONTE PHASE 4A
NEW URBAN DISTRICT
PORTIONS OF S 1/2 SEC. 24 &
NW 1/4 SEC. 25, T20N - R20E



BOOK 518

111

112

(#5012)
MIRAMONTE PHASE 4B
UNIT 1
NEW URBAN DISTRICT