

# MAP OF DIVISION INTO LARGE PARCELS #36

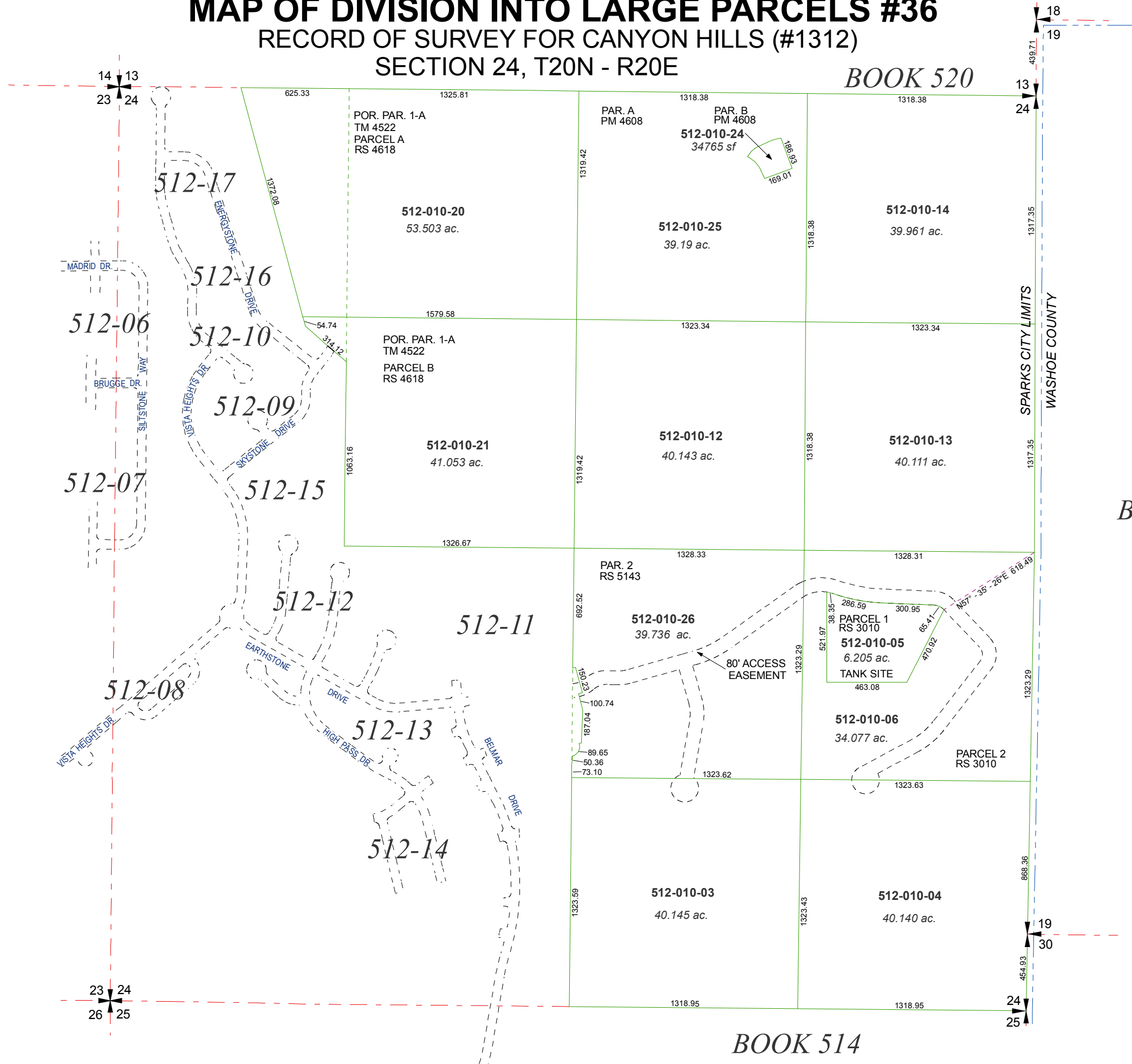
## RECORD OF SURVEY FOR CANYON HILLS (#1312)

### SECTION 24, T20N - R20E

BOOK 520

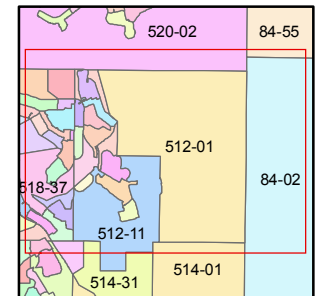
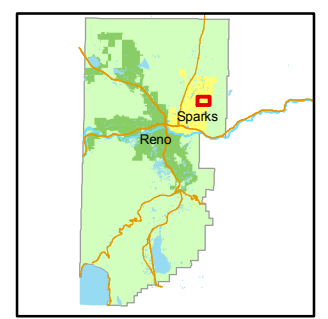
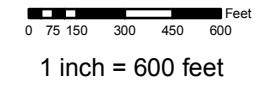
BOOK 84

BOOK 514



Assessor's Map Number  
**512-01**

STATE OF NEVADA  
**WASHOE COUNTY**  
**ASSESSOR'S OFFICE**  
Joshua G. Wilson, Assessor  
1001 East Ninth Street  
Building D  
Reno, Nevada 89512  
(775) 328-2231



created by: KSB 5/11/09  
last updated: \_\_\_\_\_

area previously shown on map(s)  
512-01, 05 & 514-01

NOTE: This map was prepared for the use of the Washoe County Assessor for assessment and illustrative purposes only. It does not represent a survey of the premises. No liability is assumed as to the sufficiency or accuracy of the data delineated hereon.