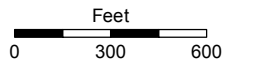


SEE INDEX PAGE 01

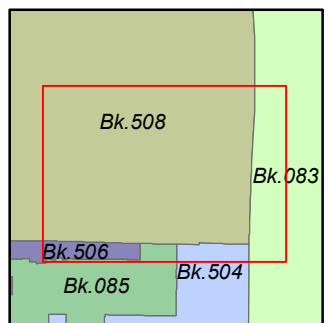
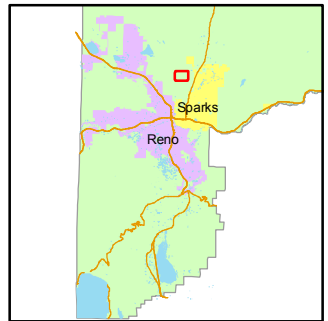
T20N - R20E

STATE OF NEVADA  
**WASHOE COUNTY**  
ASSESSOR'S OFFICE  
Joshua G. Wilson, Assessor

1001 East Ninth Street  
Building D  
Reno, Nevada 89512  
(775) 328-2231



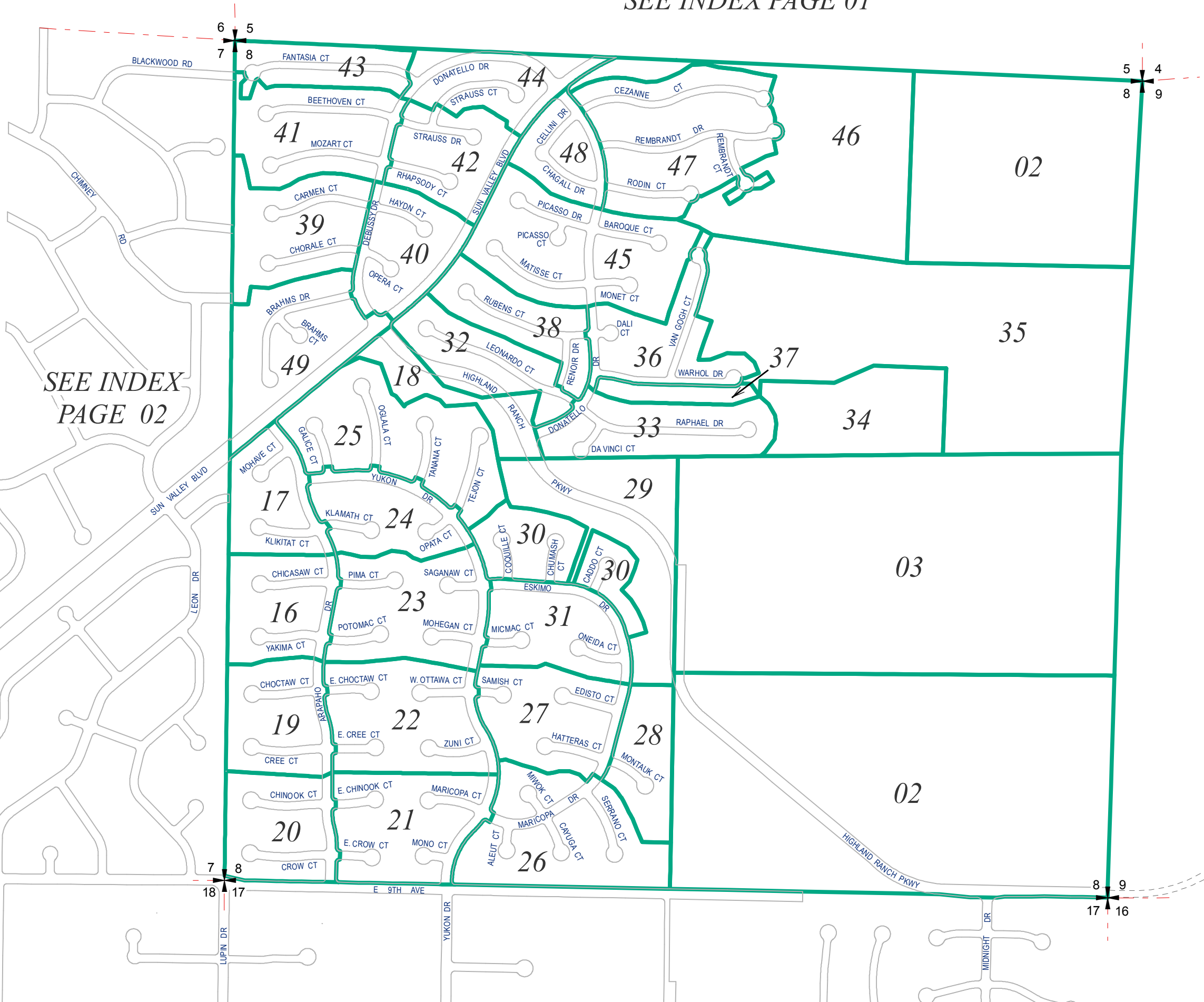
1 inch = 600 feet



created by: KSB 1/05/2011

last updated: \_\_\_\_\_

NOTE: This map was prepared for the use of the Washoe County Assessor for assessment and illustrative purposes only. It does not represent a survey of the premises. No liability is assumed as to the sufficiency or accuracy of the data delineated herein.



SEE INDEX  
PAGE 02