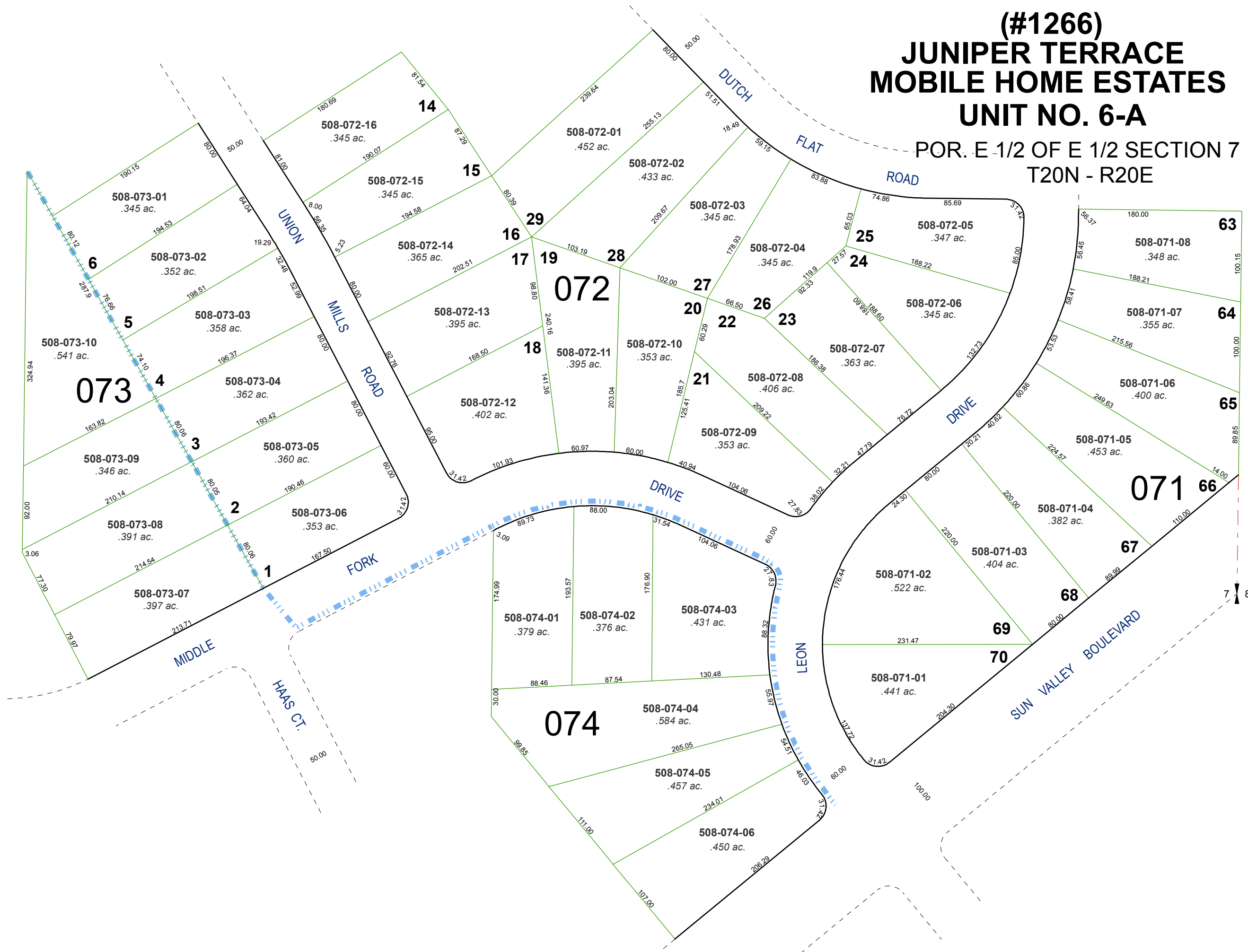


# (#1266) JUNIPER TERRACE MOBILE HOME ESTATES UNIT NO. 6-A

POR. E 1/2 OF E 1/2 SECTION 7  
T20N - R20E

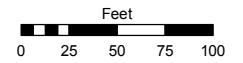


Assessor's Map Number

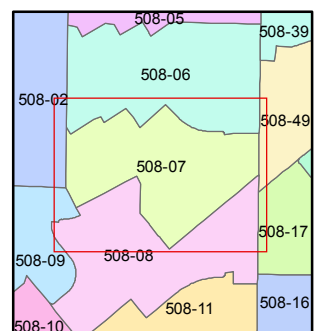
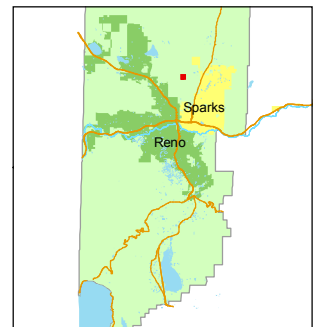
**508-07**

STATE OF NEVADA  
**WASHOE COUNTY**  
ASSESSOR'S OFFICE  
Joshua G. Wilson, Assessor

1001 East Ninth Street  
Building D  
Reno, Nevada 89512  
(775) 328-2231



1 inch = 100 feet



created by: DSR 1/13/2011

last updated: \_\_\_\_\_

area previously shown on map(s)

083-36 083-37

NOTE: This map was prepared for the use of the Washoe County Assessor for assessment and illustrative purposes only. It does not represent a survey of the premises. No liability is assumed as to the sufficiency or accuracy of the data delineated hereon.