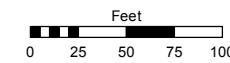
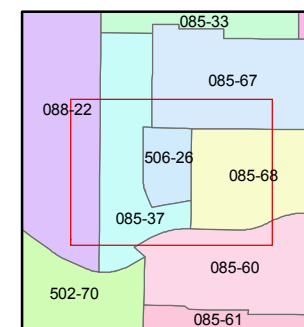
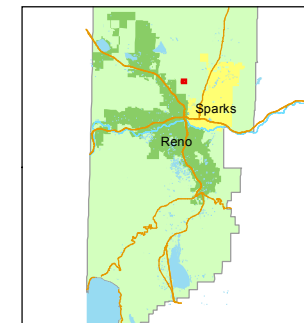


STATE OF NEVADA
WASHOE COUNTY
ASSESSOR'S OFFICE
Joshua G. Wilson, Assessor

1001 East Ninth Street
Building D
Reno, Nevada 89512
(775) 328-2231



1 inch = 100 feet



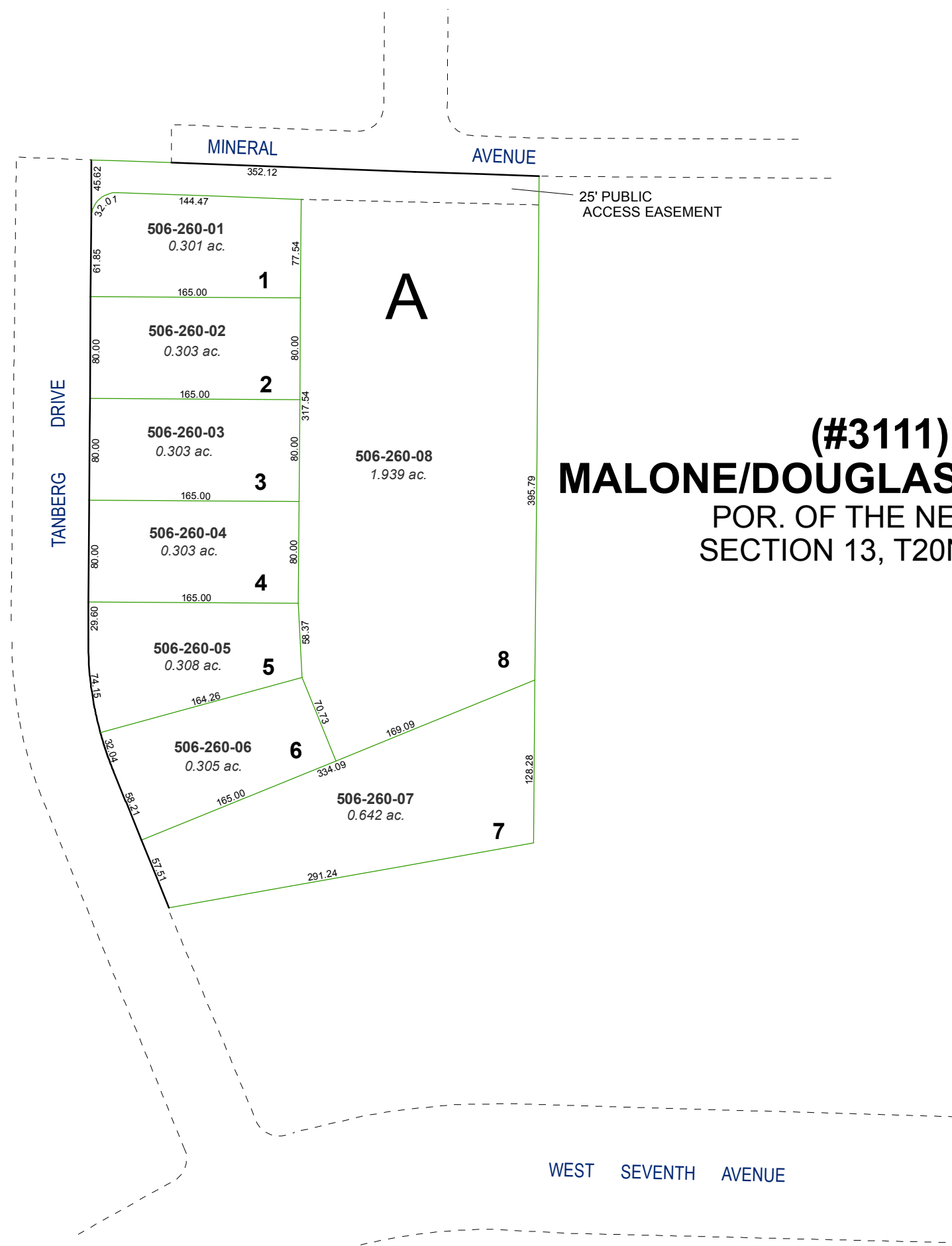
created by: DSR 11/16/2010

last updated: TWT 3/20/2012

area previously shown on map(s)

085-37

NOTE: This map was prepared for the use of the Washoe County Assessor for assessment and illustrative purposes only. It does not represent a survey of the premises. No liability is assumed as to the sufficiency or accuracy of the data delineated hereon.



(#3111)
MALONE/DOUGLAS SUBDIVISION
POR. OF THE NE 1/4 OF
SECTION 13, T20N - R19E