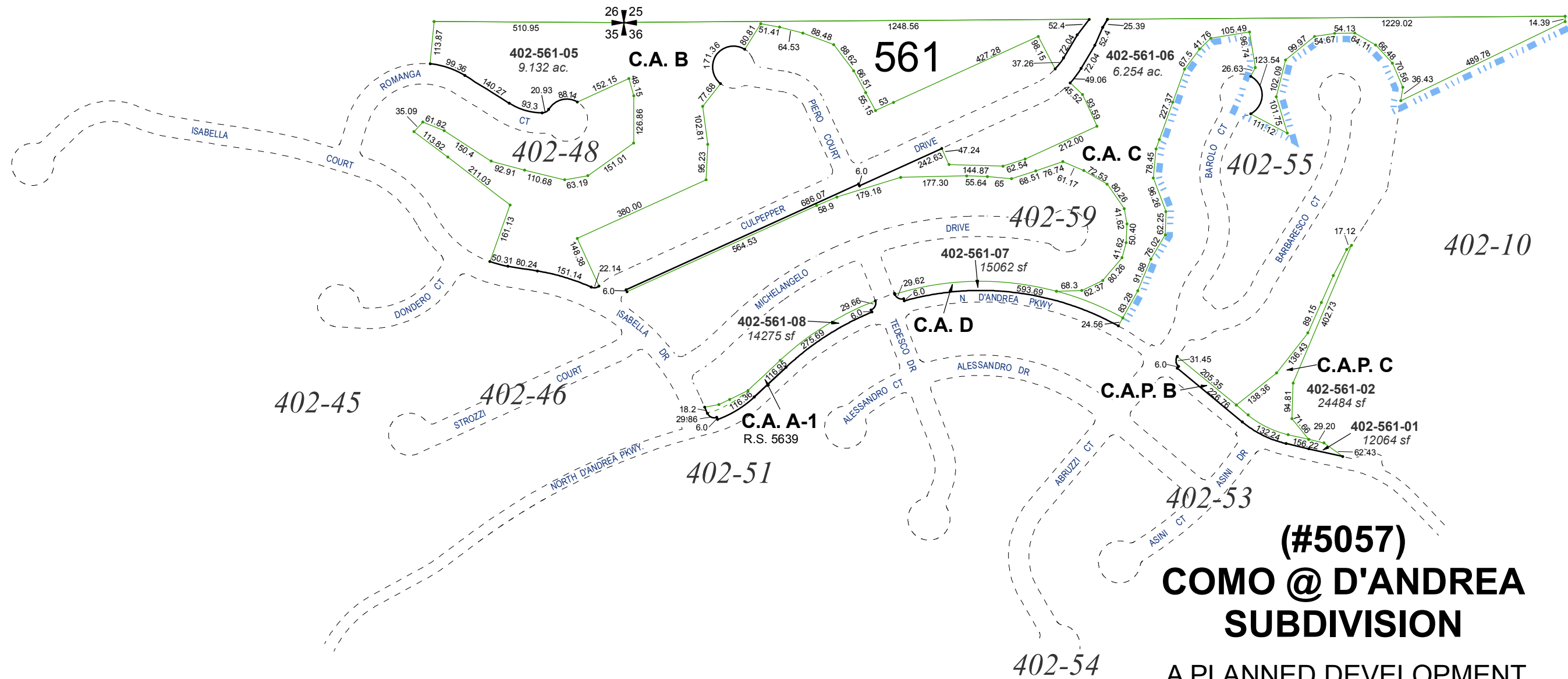


(#5094)
TRENTO @ D'ANDREA
SUBDIVISION

A PLANNED DEVELOPMENT

BEING A DIVISION OF PARCEL E OF TRACT MAP 5057
 POR. OF THE NE 1/4 SECTION 35 & THE N 1/2 OF SEC. 36, T20N,- R20E



(#5057)
COMO @ D'ANDREA
SUBDIVISION

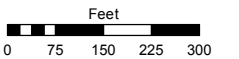
A PLANNED DEVELOPMENT

Assessor's Map Number

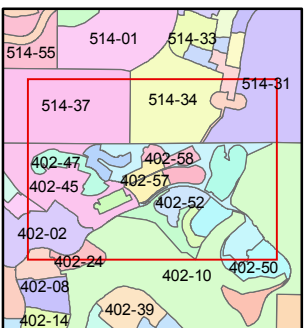
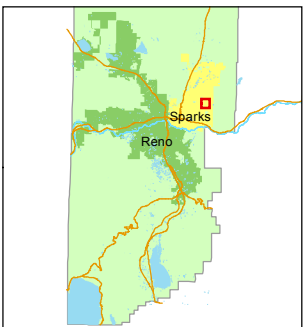
402-56

STATE OF NEVADA
WASHOE COUNTY
 ASSESSOR'S OFFICE
 Michael E. Clark, Assessor

1001 East Ninth Street
 Building D
 Reno, Nevada 89512
 (775) 328-2231



1 inch = 300 feet



created by: CFB 01/08/2014

last updated: CFB 10/23/14 EMG 6/24/15

area previously shown on map(s)

402-10

NOTE: This map was prepared for the use of the Washoe County Assessor for assessment and illustrative purposes only. It does not represent a survey of the premises. No liability is assumed as to the sufficiency or accuracy of the data delineated hereon.