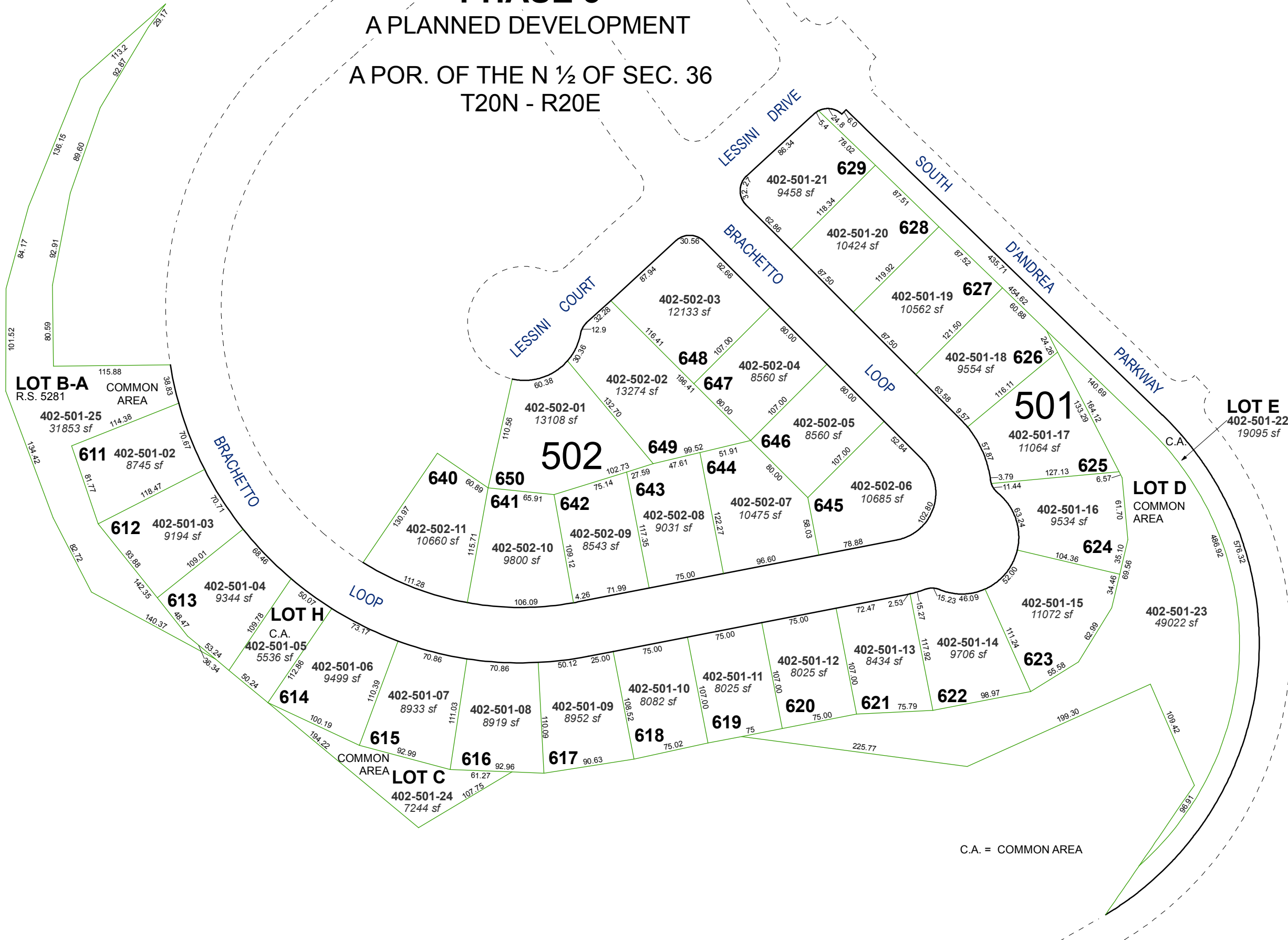


(#4797)
VERONA VILLAGE @ D'ANDREA RANCH
PHASE 3
 A PLANNED DEVELOPMENT

A POR. OF THE N 1/2 OF SEC. 36
 T20N - R20E



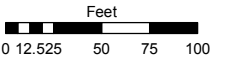
C.A. = COMMON AREA

Assessor's Map Number

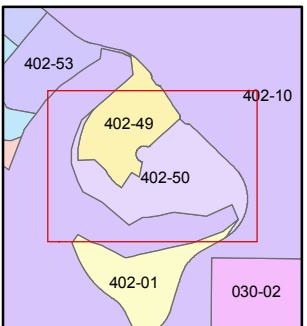
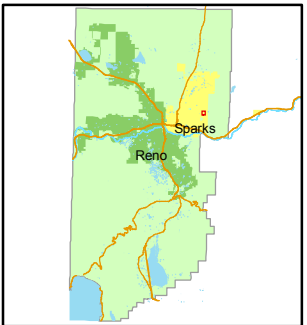
402-50

STATE OF NEVADA
WASHOE COUNTY
ASSESSOR'S OFFICE
 Joshua G. Wilson, Assessor

1001 East Ninth Street
 Building D
 Reno, Nevada 89512
 (775) 328-2231



1 inch = 100 feet



created by: NLH 12/08/2010

last updated: NLH 12/14/2010

area previously shown on map(s)

402-10

NOTE: This map was prepared for the use of the Washoe County Assessor for assessment and illustrative purposes only. It does not represent a survey of the premises. No liability is assumed as to the sufficiency or accuracy of the data delineated herein.