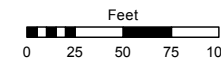
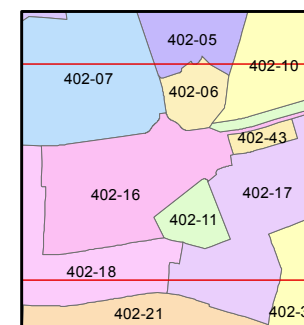
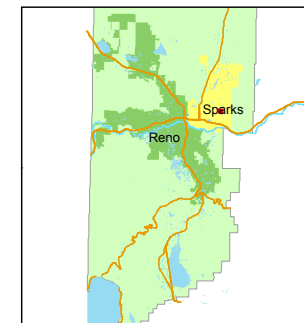


STATE OF NEVADA
WASHOE COUNTY
ASSESSOR'S OFFICE
Joshua G. Wilson, Assessor

1001 East Ninth Street
Building D
Reno, Nevada 89512
(775) 328-2231



1 inch = 100 feet



created by: DSR 10/19/11

last updated: _____

area previously shown on map(s)

402-11

NOTE: This map was prepared for the use of the Washoe County Assessor for assessment and illustrative purposes only. It does not represent a survey of the premises. No liability is assumed as to the sufficiency or accuracy of the data delineated hereon.

(#3833)
TOSCANA @ D'ANDREA
UNIT 1 SUBDIVISION
PORTION OF SE 1/4 OF SECTION 35
T20N - R20E
PORTION OF NE 1/4 OF SECTION 2
T19N - R20E

