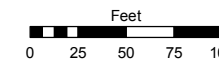
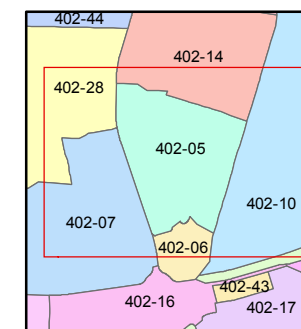
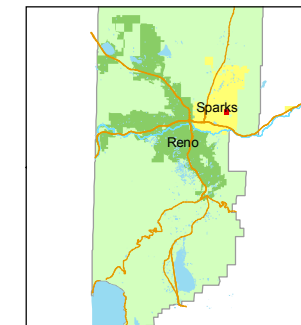


STATE OF NEVADA
WASHOE COUNTY
ASSESSOR'S OFFICE
Joshua G. Wilson, Assessor

1001 East Ninth Street
Building D
Reno, Nevada 89512
(775) 328-2231



1 inch = 100 feet



created by: DSR 4/07/2011

last updated: _____

area previously shown on map(s)

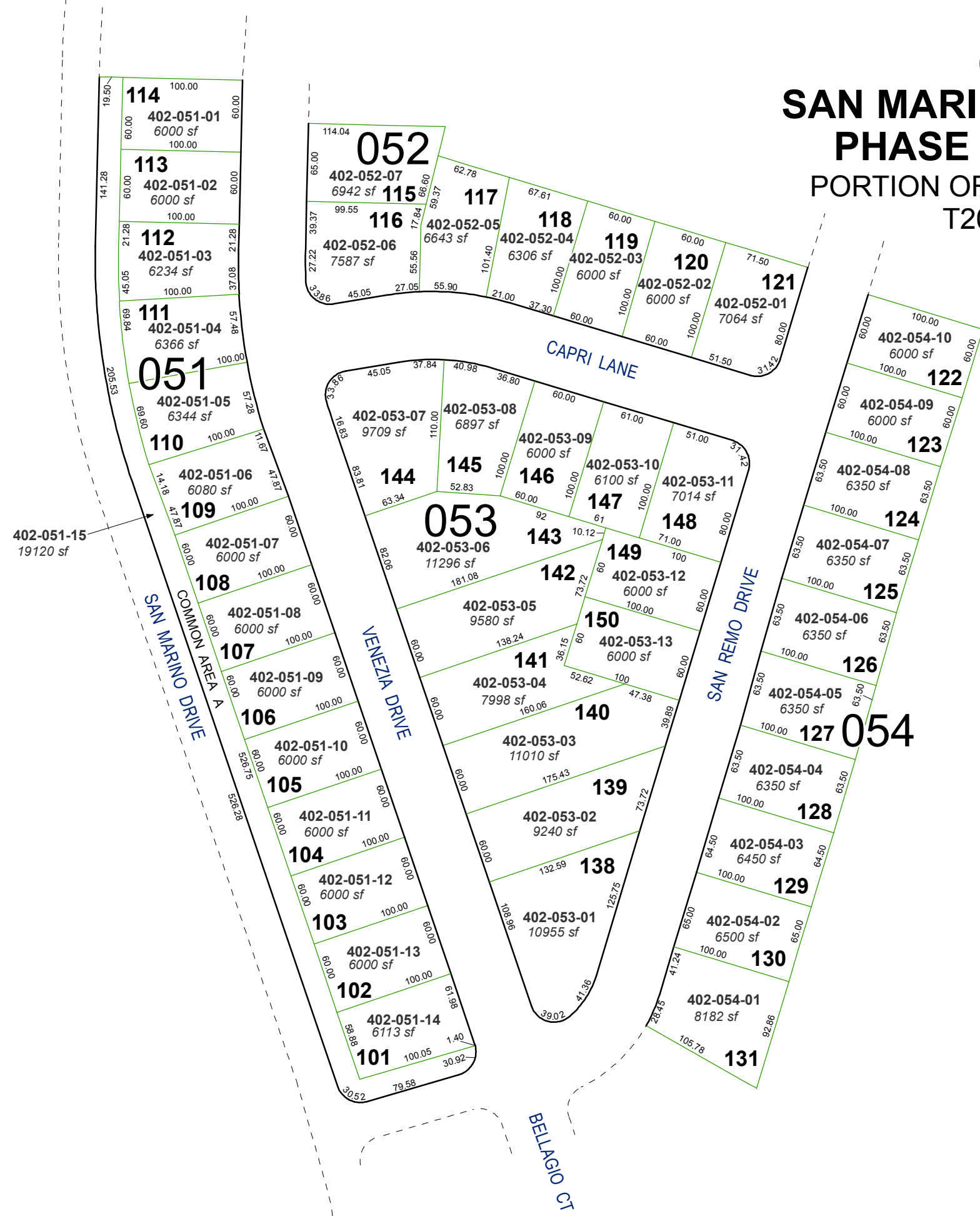
30-02

NOTE: This map was prepared for the use of the Washoe County Assessor for assessment and illustrative purposes only. It does not represent a survey of the premises. No liability is assumed as to the sufficiency or accuracy of the data delineated hereon.

(#3699)

SAN MARINO @ D'ANDREA PHASE 1 SUBDIVISION

PORTION OF SE 1/4 OF SECTION 35
T20N - R20E



402-051-15
19120 sf