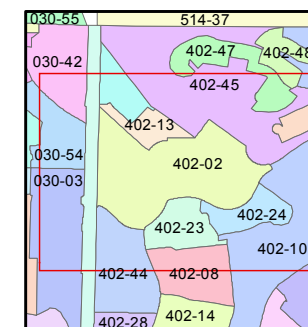
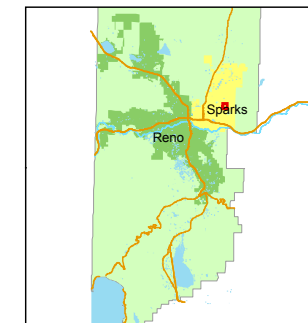




1 inch = 200 feet



created by: DSR 1/11/2012

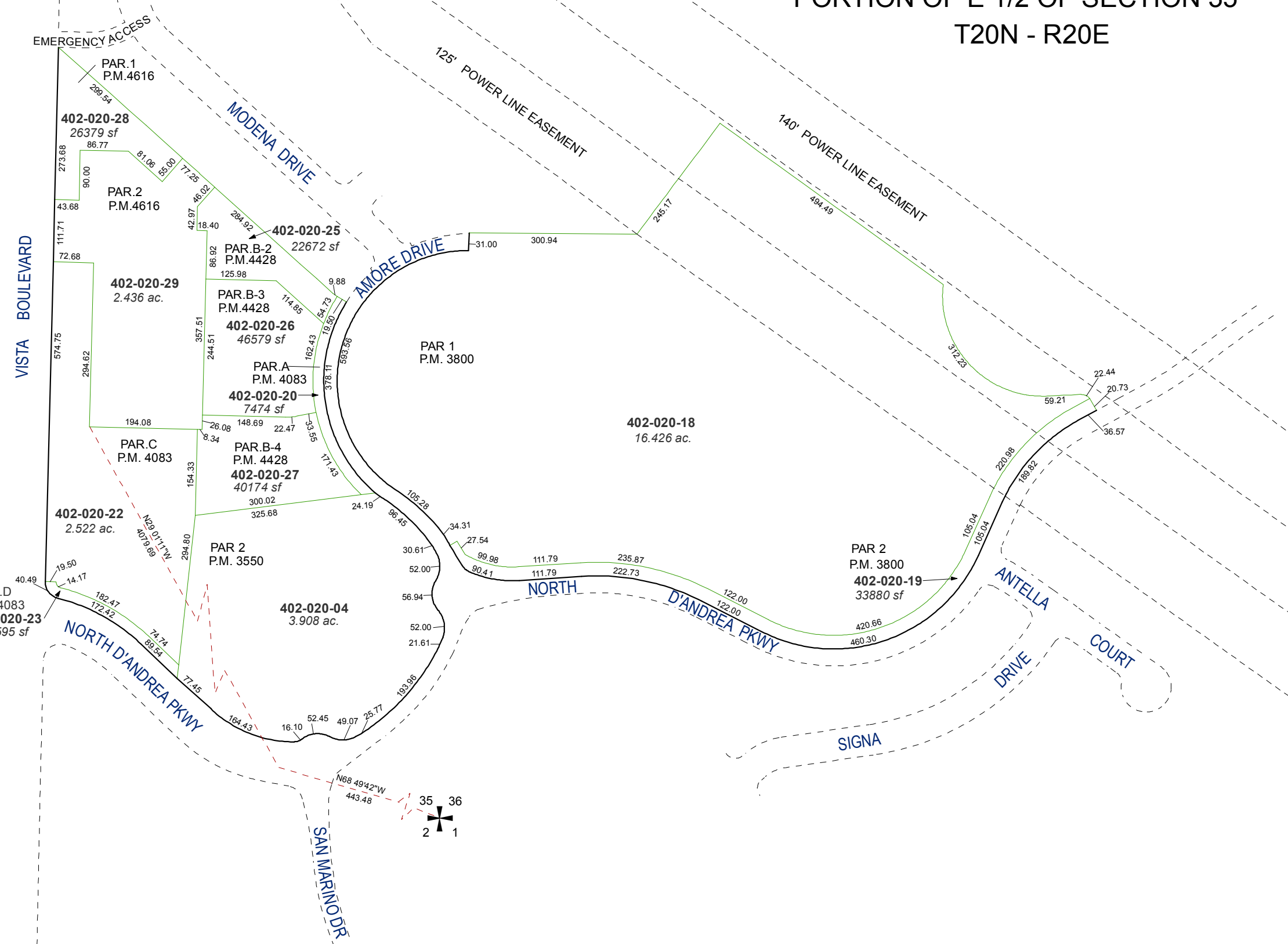
last updated: _____

area previously shown on map(s)

30-02

NOTE: This map was prepared for the use of the Washoe County Assessor for assessment and illustrative purposes only. It does not represent a survey of the premises. No liability is assumed as to the sufficiency or accuracy of the data delineated hereon.

PORTION OF E 1/2 OF SECTION 35 T20N - R20E



EMERGENCY ACCESS

PAR.1
P.M.4616

402-020-28
26379 sf

PAR.2
P.M.4616

402-020-29
2.436 ac.

402-020-25
22672 sf

PAR.B-2
P.M.4428

PAR.B-3
P.M.4428

402-020-26
46579 sf

PAR.A
P.M. 4083

402-020-20
7474 sf

PAR.C
P.M. 4083

PAR.B-4
P.M. 4428

402-020-27
40174 sf

402-020-22
2.522 ac.

PAR 2
P.M. 3550

402-020-04
3.908 ac.

PAR.D
P.M.4083

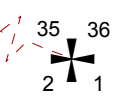
402-020-23
5595 sf

PAR 1
P.M. 3800

402-020-18
16.426 ac.

PAR 2
P.M. 3800

402-020-19
33880 sf



SAN MARINO DR

VISTA BOULEVARD

BARING BOULEVARD

NORTH D'ANDREA PKWY

NORTH D'ANDREA PKWY

SIGNA DRIVE

ANTELLA DRIVE COURT

MODENA DRIVE

AMORE DRIVE

125' POWER LINE EASEMENT

140' POWER LINE EASEMENT